

Datasheet for ABIN7274962
IL-6 Protein (AA 30-212)

4 Images

[Go to Product page](#)

Overview

Quantity:	100 µg
Target:	IL-6 (IL6)
Protein Characteristics:	AA 30-212
Origin:	Human
Source:	Escherichia coli (E. coli)
Protein Type:	Recombinant

Product Details

Purpose:	Human IL-6 Protein
Sequence:	Val30-Met212
Characteristics:	Recombinant Human IL-6 is expressed from E.coli without tag.It contains Val30-Met212.
Purity:	> 95 % as determined by Tris-Bis PAGE,> 90 % as determined by HPLC
Sterility:	0.22 µm filtered
Endotoxin Level:	Less than 1EU per µg by the LAL method.
Biological Activity Comment:	Immobilized Human IL-6 at 0.5µg/ml (100µl/Well) on the plate. Dose response curve for Human IL-6 R alpha, hFc Tag with the EC50 32.6ng/ml determined by ELISA. The affinity constant of 0.22 nM as determined in SPR assay (Biacore T200). See testing image for detail.

Target Details

Target:	IL-6 (IL6)
---------	------------

Target Details

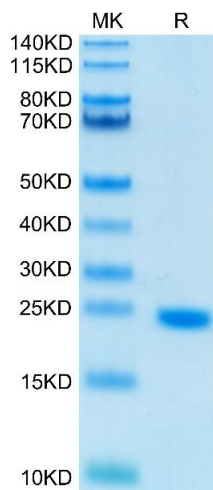
Alternative Name:	IL-6 (IL6 Products)
Background:	IL-6 (Interleukin-6) is a pleiotropic cytokine that acts in the acute phase reaction, inflammation, hematopoiesis, bone metabolism, and cancer progression. Interleukin 6 has been shown to interact with interleukin-6 receptor and glycoprotein.
Molecular Weight:	The protein has a predicted 20.8 kDa same as Tris-Bis PAGE result.
UniProt:	P05231
Pathways:	TLR Signaling , Hormone Transport , Negative Regulation of Hormone Secretion , Myometrial Relaxation and Contraction , Positive Regulation of Immune Effector Process , Production of Molecular Mediator of Immune Response , Regulation of Carbohydrate Metabolic Process , Autophagy , Cell RedoxHomeostasis , Cancer Immune Checkpoints , Inflammasome

Application Details

Restrictions:	For Research Use only
---------------	-----------------------

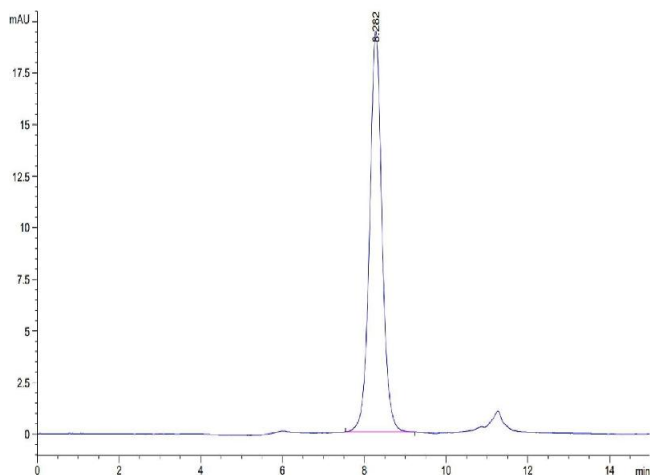
Handling

Format:	Lyophilized
Reconstitution:	Centrifuge the tube before opening. Reconstituting to a concentration more than 100 µg/mL is recommended. Dissolve the lyophilized protein in distilled water.
Buffer:	Lyophilized from 0.22µm filtered solution in PBS (pH 7.4). Normally 8 % trehalose is added as protectant before lyophilization.
Storage:	-20 °C,-80 °C
Storage Comment:	-20 to -80°C for 12 months as supplied from date of receipt., -80°C for 3-6 months after reconstitution., 2-8°C for 2-7 days after reconstitution., Recommend to aliquot the protein into smaller quantities for optimal storage. Please minimize freeze-thaw cycles.
Expiry Date:	12 months



SDS-PAGE

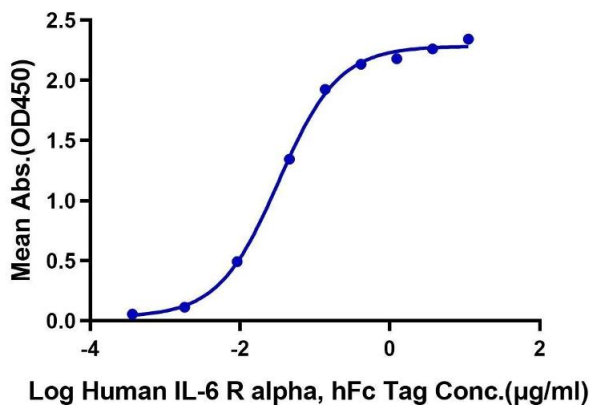
Image 1. Human IL-6 on Tris-Bis PAGE under reduced condition. The purity is greater than 95 % .



Size-exclusion chromatography-High Pressure Liquid Chromatography

Image 2. The purity of Human IL-6 is greater than 90 % as determined by SEC-HPLC.

Human IL-6, No Tag ELISA
0.05µg Human IL-6, No Tag Per Well



ELISA

Image 3. Immobilized Human IL-6 at 0.5 µg/mL (100 µ L/Well) on the plate. Dose response curve for Human IL-6 R alpha, hFc Tag with the EC50 32.6 ng/mL determined by ELISA.

Please check the [product details page](#) for more images. Overall 4 images are available for ABIN7274962.