



[Go to Product page](#)

## Datasheet for ABIN7275020 IL15RA Protein (Fc Tag)

### 4 Images

#### Overview

Quantity:	100 µg
Target:	IL15RA
Origin:	Human
Source:	HEK-293 Cells
Protein Type:	Recombinant
Purification tag / Conjugate:	This IL15RA protein is labelled with Fc Tag.

#### Product Details

Sequence:	Ile31-Thr205
Purity:	> 95% as determined by Tris-Bis PAGE, > 95% as determined by HPLC
Sterility:	0.22 µm filtered
Endotoxin Level:	Less than 1EU per µg by the LAL method.
Biological Activity Comment:	Immobilized Human IL-15, No Tag at 0.5µg/ml (100µl/Well) on the plate. Dose response curve for Human IL-15RA, hFc Tag with the EC50 of 61.2ng/ml determined by ELISA. See testing image for detail.

#### Target Details

Target:	IL15RA
Alternative Name:	IL-15RA ( <a href="#">IL15RA Products</a> )
Background:	IL-15 R alpha, CD215, IL-15RA, MGC104179, Interleukin-15 receptor alpha (IL-15R alpha) is a high affinity IL-15 binding protein that is crucial for mediating IL-15 functions such as memory

## Target Details

CD8 T cell proliferation and NK, NK/T cell, and intestinal intraepithelial lymphocyte development.

Molecular Weight: 45.1 kDa. Due to glycosylation, the protein migrates to 70-80 kDa based on Tris-Bis PAGE result.

Pathways: [JAK-STAT Signaling](#)

## Application Details

Restrictions: For Research Use only

## Handling

Format: Lyophilized

Reconstitution: Centrifuge tubes before opening. Reconstituting to a concentration more than 100 µg/mL is recommended (usually we use 1 mg/mL solution for lyophilization). Dissolve the lyophilized protein in distilled water.

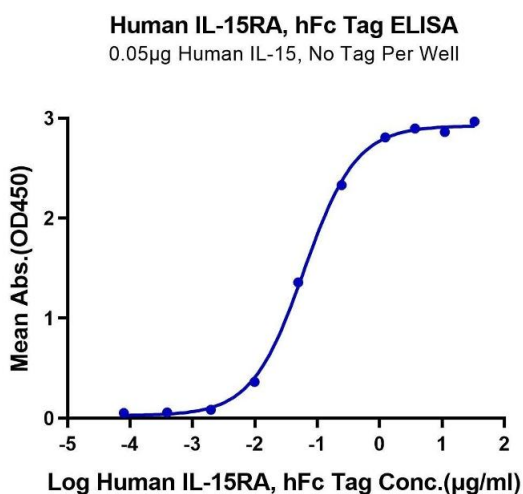
Buffer: Lyophilized from 0.22µm filtered solution in PBS ( pH 7.4). Normally 5 % trehalose is added as protectant before lyophilization.

Storage: 4 °C,-80 °C

Storage Comment: Reconstituted protein stable at -80°C for 12 months, 4°C for 1 week. Use a manual defrost freezer and avoid repeated freeze-thaw cycles.

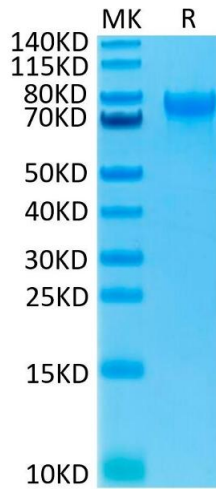
Expiry Date: 12 months

## Images



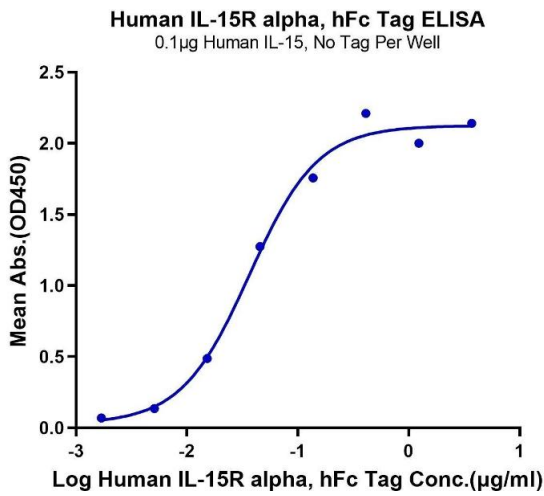
### ELISA

**Image 1.** Immobilized Human IL-15, No Tag at 0.5 µg/mL (100 µL/Well) on the plate. Dose response curve for Human IL-15RA, hFc Tag with the EC50 of 61.2 ng/mL determined by ELISA.



### SDS-PAGE

**Image 2.** Human IL-15RA on Tris-Bis PAGE under reduced condition. The purity is greater than 95 % .



### ELISA

**Image 3.** Immobilized Human IL-15 at 1 µg/mL (100 µ L/Well). Dose response curve for Human IL-15RA,hFc Tag with the EC50 of 36.6 ng/mL determined by ELISA.

Please check the [product details page](#) for more images. Overall 4 images are available for ABIN7275020.