

Datasheet for ABIN7275024
IL6RA Protein (AA 20-365) (Fc Tag)

3 Images

[Go to Product page](#)

Overview

| | |
|-------------------------------|---|
| Quantity: | 100 µg |
| Target: | IL6RA |
| Protein Characteristics: | AA 20-365 |
| Origin: | Human |
| Source: | HEK-293 Cells |
| Protein Type: | Recombinant |
| Purification tag / Conjugate: | This IL6RA protein is labelled with Fc Tag. |

Product Details

| | |
|------------------------------|--|
| Purpose: | Human IL-6 R alpha/CD126 Protein |
| Sequence: | Leu20-Pro365 |
| Characteristics: | Recombinant Human IL-6 R alpha/CD126 Protein is expressed from HEK293 with hFc tag at the C-Terminus. It contains Leu20-Pro365. |
| Purity: | > 95 % as determined by Tris-Bis PAGE, > 95 % as determined by HPLC |
| Sterility: | 0.22 µm filtered |
| Endotoxin Level: | Less than 1EU per µg by the LAL method. |
| Biological Activity Comment: | Immobilized Human IL-6 at 0.5µg/ml (100µl/Well) on the plate. Dose response curve for Human IL-6 R alpha, hFc Tag with the EC50 32.6ng/ml determined by ELISA. See testing image for detail. |

Target Details

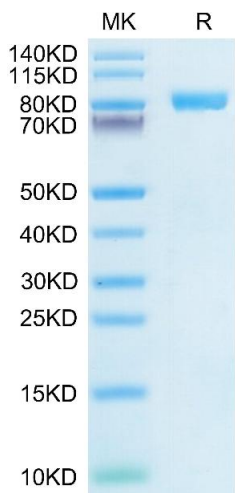
| | |
|-------------------|---|
| Target: | IL6RA |
| Alternative Name: | IL-6 R alpha (IL6RA Products) |
| Background: | Serum levels of interleukin-6 (IL-6) are increased in patients with type 2 diabetes (T2D). IL-6 exerts its pleiotropic effects via the IL-6 α -receptor (IL-6R), which exists in membrane-bound and soluble (sIL-6R) forms and activates cells via the β -receptor glycoprotein 130 (gp130). |
| Molecular Weight: | 65.3 kDa. Due to glycosylation, the protein migrates to 85-110 kDa based on Tris-Bis PAGE result. |
| Pathways: | JAK-STAT Signaling , Autophagy , Growth Factor Binding , Cancer Immune Checkpoints |

Application Details

| | |
|---------------|-----------------------|
| Restrictions: | For Research Use only |
|---------------|-----------------------|

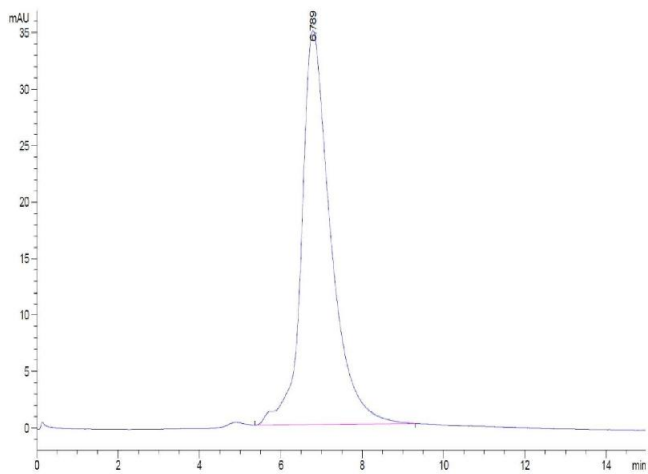
Handling

| | |
|------------------|---|
| Format: | Lyophilized |
| Reconstitution: | Centrifuge the tube before opening. Reconstituting to a concentration more than 100 μ g/mL is recommended. Dissolve the lyophilized protein in distilled water. |
| Buffer: | Lyophilized from 0.22 μ m filtered solution in PBS (pH 7.4). Normally 8 % trehalose is added as protectant before lyophilization. |
| Storage: | -20 °C,-80 °C |
| Storage Comment: | -20 to -80°C for 12 months as supplied from date of receipt., -80°C for 3-6 months after reconstitution., 2-8°C for 2-7 days after reconstitution., Recommend to aliquot the protein into smaller quantities for optimal storage. Please minimize freeze-thaw cycles. |
| Expiry Date: | 12 months |



SDS-PAGE

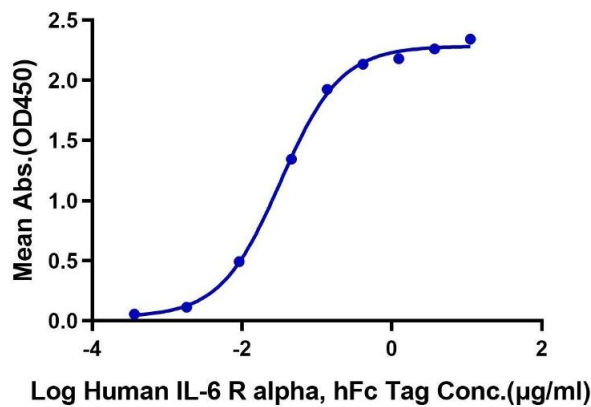
Image 1. Human IL-6 R alpha on Tris-Bis PAGE under reduced condition. The purity is greater than 95 % .



Size-exclusion chromatography-High Pressure Liquid Chromatography

Image 2. The purity of Human IL-6 R alpha is greater than 95 % as determined by SEC-HPLC.

Human IL-6 R alpha, hFc Tag ELISA
0.05µg Human IL-6, No Tag Per Well



ELISA

Image 3. Immobilized Human IL-6 at 0.5 µg/mL (100 µL/Well) on the plate. Dose response curve for Human IL-6 R alpha, hFc Tag with the EC50 32.6 ng/mL determined by ELISA.