

Datasheet for ABIN7275088

**KIR2DL3 Protein (AA 22-245) (His-Avi Tag)****2** Images[Go to Product page](#)

## Overview

Quantity:	100 µg
Target:	KIR2DL3
Protein Characteristics:	AA 22-245
Origin:	Human
Source:	HEK-293 Cells
Protein Type:	Recombinant
Purification tag / Conjugate:	This KIR2DL3 protein is labelled with His-Avi Tag.

## Product Details

Purpose:	Human KIR2DL3 Protein
Sequence:	His22-His245
Characteristics:	Recombinant Human KIR2DL3 Protein is expressed from HEK293 with His tag and Avi tag at the C-Terminus. It contains His22-His245.
Purity:	> 95 % as determined by Tris-Bis PAGE, > 95 % as determined by HPLC
Sterility:	0.22 µm filtered
Endotoxin Level:	Less than 1EU per µg by the LAL method.

## Target Details

Target:	KIR2DL3
Alternative Name:	KIR2DL3 ( <a href="#">KIR2DL3 Products</a> )

## Target Details

Background:	KIR2DL3 (2DL3, formerly NKAT2, designated CD158b2) is a 341 amino acid (aa) type I transmembrane glycoprotein that belongs to the human killer cell Ig-like receptor (KIR) family of molecules. KIRs are expressed on human CD56dim NK cells and T cell subsets, and regulate effector functions in the innate immune system. KIR2DL3 is a receptor on natural killer (NK) cells for HLA-C alleles (HLA-Cw1, HLA-Cw3 and HLA-Cw7). Inhibits the activity of NK cells thus preventing cell lysis.
Molecular Weight:	27.3 kDa. Due to glycosylation, the protein migrates to 45-52 kDa based on Tris-Bis PAGE result.
UniProt:	<a href="#">P43628</a>
Pathways:	<a href="#">Cancer Immune Checkpoints</a>

## Application Details

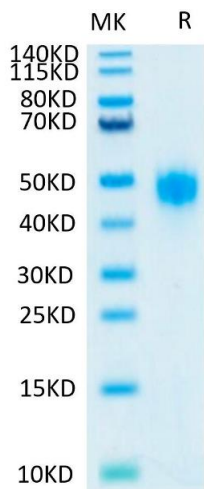
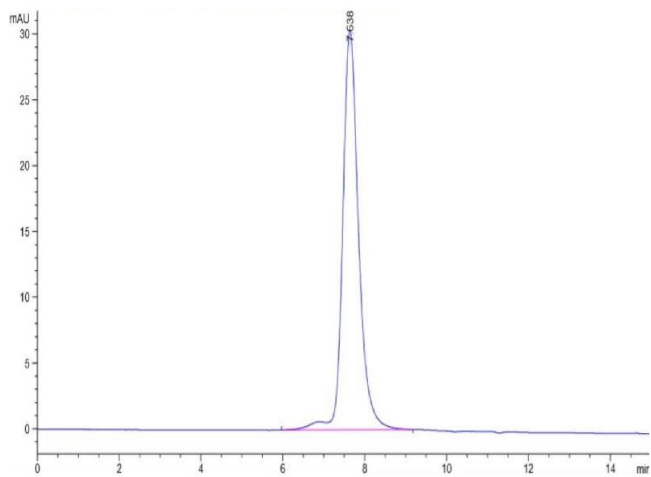
Restrictions:	For Research Use only
---------------	-----------------------

## Handling

Format:	Lyophilized
Reconstitution:	Centrifuge the tube before opening. Reconstituting to a concentration more than 100 µg/mL is recommended. Dissolve the lyophilized protein in distilled water.
Buffer:	Lyophilized from 0.22µm filtered solution in PBS ( pH 7.4). Normally 8 % trehalose is added as protectant before lyophilization.
Storage:	-20 °C,-80 °C
Storage Comment:	-20 to -80°C for 12 months as supplied from date of receipt., -80°C for 3-6 months after reconstitution., 2-8°C for 2-7 days after reconstitution., Recommend to aliquot the protein into smaller quantities for optimal storage. Please minimize freeze-thaw cycles.
Expiry Date:	12 months

Size-exclusion chromatography-High Pressure Liquid Chromatography

**Image 1.** The purity of Human KIR2DL3 is greater than 95 % as determined by SEC-HPLC.



SDS-PAGE

**Image 2.** Human KIR2DL3 on Tris-Bis PAGE under reduced conditions. The purity is greater than 95 % .