

Datasheet for ABIN7275092

Klotho beta Protein (KLB) (His tag)

7 Images

[Go to Product page](#)

Overview

Quantity:	100 µg
Target:	Klotho beta (KLB)
Origin:	Human
Source:	HEK-293 Cells
Protein Type:	Recombinant
Purification tag / Conjugate:	This Klotho beta protein is labelled with His tag.

Product Details

Sequence:	Met30-Thr983
Purity:	> 95% as determined by Tris-Bis PAGE, > 95% as determined by HPLC
Sterility:	0.22 µm filtered
Endotoxin Level:	Less than 1EU per µg by the LAL method.
Biological Activity Comment:	Immobilized Human Beta Klotho at 2µg/ml (100µl/Well). Dose response curve for Anti-Beta Klotho Antibody1, hFc Tag with the EC50 of 38.5ng/ml determined by ELISA. The affinity constant of 0.54nM as determined in SPR assay (Biacore T200). See testing image for detail.

Target Details

Target:	Klotho beta (KLB)
Alternative Name:	Beta Klotho (KLB Products)
Background:	BetaKlotho, beta-klotho, BKL, KLB, klotho beta like, Klotho beta, MGC142213, Beta-klotho (KLB) is a coreceptor required for endocrine fibroblast growth factor (FGF) 15/19 and FGF21

Target Details

signaling in the brain. Klb is prominent within the hypothalamus, which is consistent with its metabolic functions, but diverse roles for Klb are now emerging. Central Klb expression is low but discrete and may govern FGF-targeted sites.

Molecular Weight: 111.6 kDa. Due to glycosylation, the protein migrates to 115-130 kDa based on Tris-Bis PAGE result.

UniProt: [Q86Z14](#)

Pathways: [Fc-epsilon Receptor Signaling Pathway](#), [EGFR Signaling Pathway](#), [Neurotrophin Signaling Pathway](#), [Growth Factor Binding](#)

Application Details

Restrictions: For Research Use only

Handling

Format: Lyophilized

Reconstitution: Centrifuge tubes before opening. Reconstituting to a concentration more than 100 µg/mL is recommended (usually we use 1 mg/mL solution for lyophilization). Dissolve the lyophilized protein in distilled water.

Buffer: Lyophilized from 0.22µm filtered solution in PBS (pH 7.4). Normally 8 % trehalose is added as protectant before lyophilization.

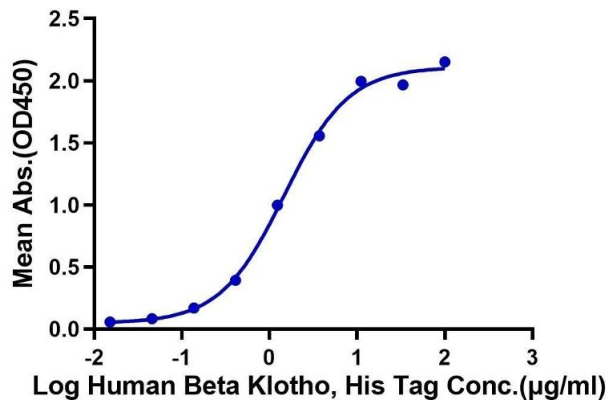
Storage: 4 °C, -80 °C

Storage Comment: Reconstituted protein stable at -80°C for 12 months, 4°C for 1 week. Use a manual defrost freezer and avoid repeated freeze-thaw cycles.

Expiry Date: 12 months

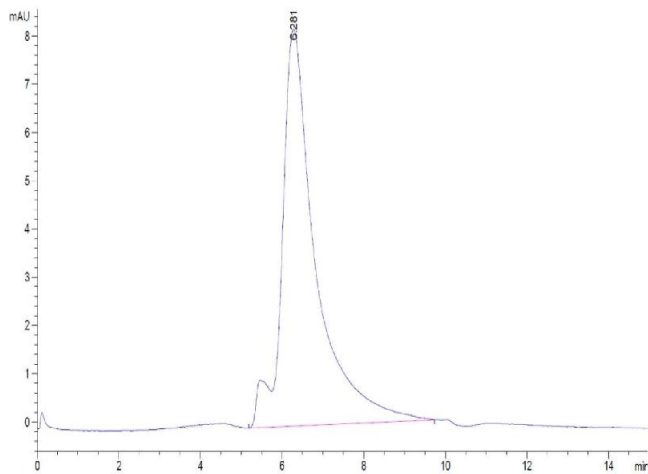
Human Beta Klotho, His Tag ELISA

0.2µg Human FGF21, mFc Tag Per Well



ELISA

Image 1. Immobilized Human FGF21, mFc Tag at 2 µg/mL (100 µL/Well) on the plate. Dose response curve for Human Beta Klotho, His Tag with the EC50 of 1.48 µg/mL determined by ELISA.

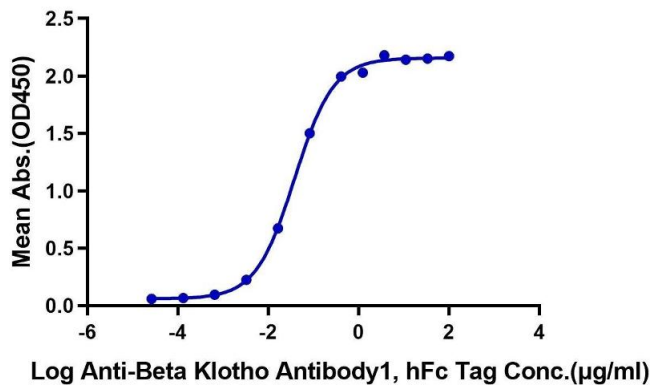


Size-exclusion chromatography-High Pressure Liquid Chromatography

Image 2. The purity of Human Beta Klotho is greater than 95 % as determined by SEC-HPLC.

Human Beta Klotho, His Tag ELISA

0.2µg Human Beta Klotho, His Tag Per Well



ELISA

Image 3. Immobilized Human Beta Klotho at 2 µg/mL (100 µL/Well). Dose response curve for Anti-Beta Klotho Antibody1, hFc Tag with the EC50 of 38.5 ng/mL determined by ELISA.

Please check the [product details page](#) for more images. Overall 7 images are available for ABIN7275092.