



[Go to Product page](#)

Datasheet for ABIN7275096

## KLKB1 Protein (AA 20-638) (His tag)

### 4 Images

#### Overview

Quantity:	100 µg
Target:	KLKB1
Protein Characteristics:	AA 20-638
Origin:	Human
Source:	HEK-293 Cells
Protein Type:	Recombinant
Purification tag / Conjugate:	This KLKB1 protein is labelled with His tag.

#### Product Details

Purpose:	Human KLKB1 Protein
Sequence:	Gly20-Ala638
Characteristics:	Recombinant Human KLKB1 Protein is expressed from HEK293 with His tag at the C-Terminus. It contains Gly20-Ala638.
Purity:	> 95 % as determined by Tris-Bis PAGE, > 95 % as determined by HPLC
Sterility:	0.22 µm filtered
Endotoxin Level:	Less than 1EU per µg by the LAL method.
Biological Activity Comment:	Immobilized Human KLKB1, His Tag at 2µg/ml (100µl/well) on the plate. Dose response curve for Anti-KLKB1 Antibody, hFc Tag with the EC50 of 21.4ng/ml determined by ELISA. See testing image for detail.

## Target Details

---

Target:	KLKB1
Alternative Name:	KLKB1 ( <a href="#">KLKB1 Products</a> )
Background:	Plasma kallikrein, also known as Fletcher factor or kallikrein B1 (KLKB1), is a serine endopeptidase, like its homologs tissue kallikrein and kallikrein-related peptidases (KLKs). Its physiological role is to catalyze the release of kinins and other vasoactive peptides.
Molecular Weight:	70.3 kDa. Due to glycosylation, the protein migrates to 72-80 kDa based on Tris-Bis PAGE result.
UniProt:	<a href="#">P03952</a>
Pathways:	<a href="#">Complement System</a> , <a href="#">Brown Fat Cell Differentiation</a>

## Application Details

---

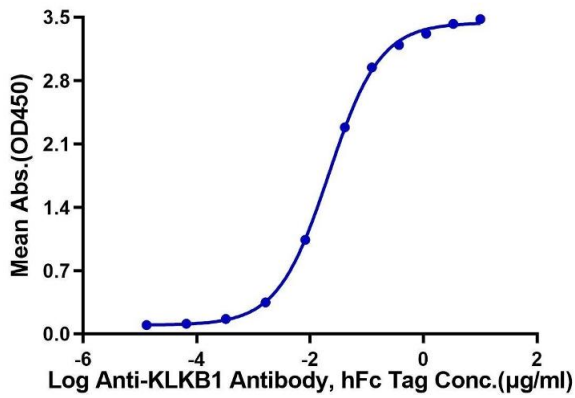
Restrictions:	For Research Use only
---------------	-----------------------

## Handling

---

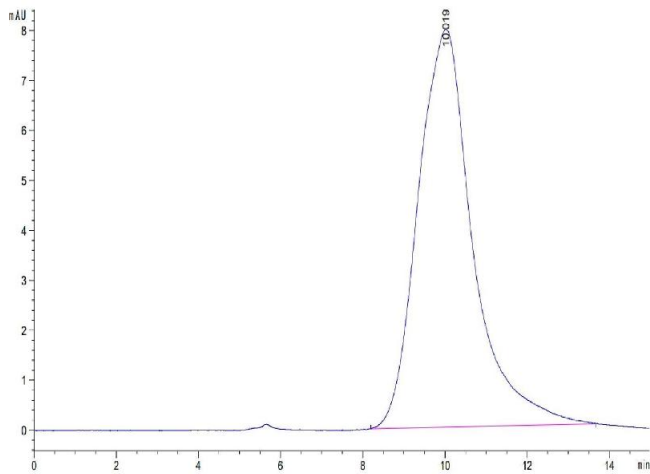
Format:	Lyophilized
Reconstitution:	Centrifuge the tube before opening. Reconstituting to a concentration more than 100 µg/mL is recommended. Dissolve the lyophilized protein in 20 mM NaAc, 150 mM NaCl (pH 5.0).
Buffer:	Lyophilized from 0.22µm filtered solution in 20 mM NaAc, 150 mM NaCl (pH 5.0). Normally 8 % trehalose is added as protectant before lyophilization.
Storage:	-20 °C, -80 °C
Storage Comment:	-20 to -80°C for 12 months as supplied from date of receipt., -80°C for 3-6 months after reconstitution., 2-8°C for 2-7 days after reconstitution., Recommend to aliquot the protein into smaller quantities for optimal storage. Please minimize freeze-thaw cycles.
Expiry Date:	12 months

**Human KLKB1, His Tag ELISA**  
0.2µg Human KLKB1, His Tag Per Well



**ELISA**

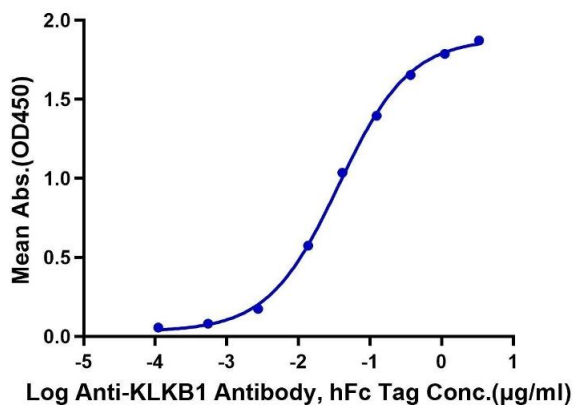
**Image 1.** Immobilized Human KLKB1, His Tag at 2 µg/mL (100 µL/well) on the plate. Dose response curve for Anti-KLKB1 Antibody, hFc Tag with the EC50 of 21.4 ng/mL determined by ELISA.



**Size-exclusion chromatography-High Pressure Liquid Chromatography**

**Image 2.** The purity of Human KLKB1 is greater than 95 % as determined by SEC-HPLC.

**Human KLKB1, His Tag ELISA**  
0.2µg Human KLKB1, His Tag Per Well



**ELISA**

**Image 3.** Immobilized Human KLKB1, His Tag at 2 µg/mL (100 µL/well) on the plate. Dose response curve for Anti-KLKB1 Antibody, hFc Tag with the EC50 of 36.7 ng/mL determined by ELISA.

Please check the [product details page](#) for more images. Overall 4 images are available for ABIN7275096.