

Datasheet for ABIN7275099

KLRG1 Protein (AA 60-195) (Fc Tag)**3** Images[Go to Product page](#)

Overview

Quantity:	100 µg
Target:	KLRG1
Protein Characteristics:	AA 60-195
Origin:	Human
Source:	HEK-293 Cells
Protein Type:	Recombinant
Purification tag / Conjugate:	This KLRG1 protein is labelled with Fc Tag.

Product Details

Purpose:	Human KLRG1 Protein
Sequence:	Leu60-Phe195
Characteristics:	Recombinant Human KLRG1 Protein is expressed from HEK293 with hFc tag at the N-Terminus. It contains Leu60-Phe195.
Purity:	> 95 % as determined by Tris-Bis PAGE, > 95 % as determined by HPLC
Sterility:	0.22 µm filtered
Endotoxin Level:	Less than 1EU per µg by the LAL method.
Biological Activity Comment:	Immobilized Human KLRG1, hFc Tag at 2µg/ml (100µl/Well) on the plate. Dose response curve for Biotinylated Anti-KLRG1 Antibody, hFc Tag with the EC50 of 18.2ng/ml determined by ELISA. See testing image for detail.

Target Details

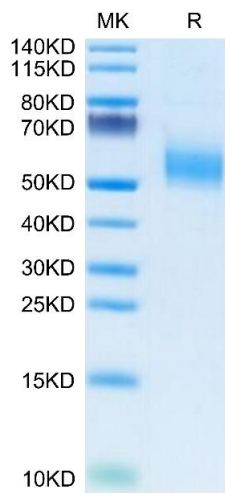
Target:	KLRG1
Alternative Name:	KLRG1 (KLRG1 Products)
Background:	Immune homeostasis requires the tight, tissue-specific control of the different CD4 Foxp3 regulatory T (Treg) cell populations. The cadherin-binding inhibitory receptor killer cell lectin-like receptor G1 (KLRG1) is expressed by a subpopulation of Treg cells with GATA3 effector phenotype. Lack of KLRG1 on Treg cells conferred on them a competitive advantage in the gut, but not in lymphoid organs. Hence, although absence of KLRG1 is not enough to increase intestinal Treg cells in KLRG1 knockout mice, KLRG1 ligation reduces T-cell receptor signals and the competitive fitness of individual Treg cells in the intestine.
Molecular Weight:	42.8 kDa. Due to glycosylation, the protein migrates to 50-65 kDa based on Tris-Bis PAGE result.

Application Details

Restrictions:	For Research Use only
---------------	-----------------------

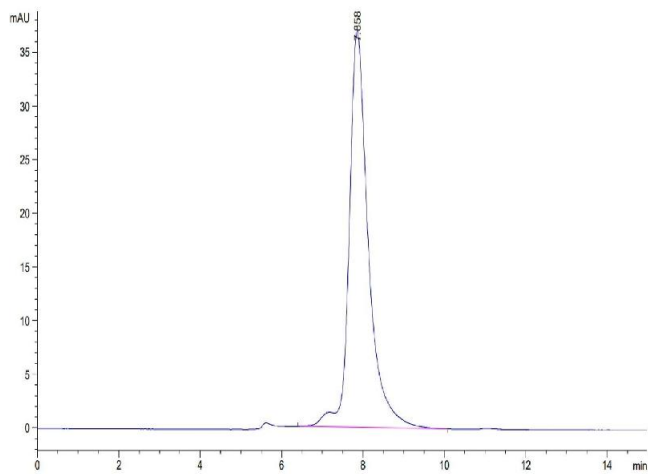
Handling

Format:	Lyophilized
Reconstitution:	Centrifuge the tube before opening. Reconstituting to a concentration more than 100 µg/mL is recommended. Dissolve the lyophilized protein in distilled water.
Buffer:	Lyophilized from 0.22µm filtered solution in PBS (pH 7.4). Normally 8 % trehalose is added as protectant before lyophilization.
Storage:	-20 °C,-80 °C
Storage Comment:	-20 to -80°C for 12 months as supplied from date of receipt.,-80°C for 3-6 months after reconstitution.,2-8°C for 2-7 days after reconstitution.,Recommend to aliquot the protein into smaller quantities for optimal storage. Please minimize freeze-thaw cycles.
Expiry Date:	12 months



SDS-PAGE

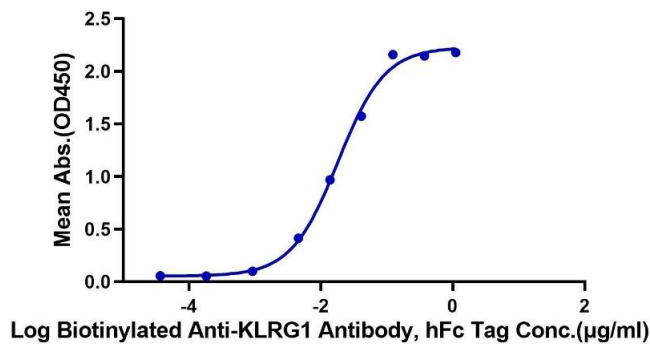
Image 1. Human KLRG1 on Tris-Bis PAGE under reduced condition. The purity is greater than 95 % .



Size-exclusion chromatography-High Pressure Liquid Chromatography

Image 2. The purity of Human KLRG1 is greater than 95 % as determined by SEC-HPLC.

Human KLRG1, hFc Tag ELISA
0.2µg Human KLRG1, hFc Tag Per Well



ELISA

Image 3. Immobilized Human KLRG1, hFc Tag at 2 µg/mL (100 µL/Well) on the plate. Dose response curve for Biotinylated Anti-KLRG1 Antibody, hFc Tag with the EC50 of 18.2 ng/mL determined by ELISA.