



[Go to Product page](#)

Datasheet for ABIN7275102

KIR3DL2 Protein (AA 22-339) (His-Avi Tag)

3 Images

Overview

Quantity:	100 µg
Target:	KIR3DL2
Protein Characteristics:	AA 22-339
Origin:	Human
Source:	HEK-293 Cells
Protein Type:	Recombinant
Purification tag / Conjugate:	This KIR3DL2 protein is labelled with His-Avi Tag.

Product Details

Purpose:	Human KIR3DL2 Protein
Sequence:	Leu22-Leu339
Characteristics:	Recombinant Human KIR3DL2 Protein is expressed from HEK293 with His tag and Avi tag at the C-Terminus. It contains Leu22-Leu339.
Purity:	> 95 % as determined by Tris-Bis PAGE, > 95 % as determined by HPLC
Sterility:	0.22 µm filtered
Endotoxin Level:	Less than 1EU per µg by the LAL method.
Biological Activity Comment:	Immobilized Human KIR3DL2, His Tag at 2µg/ml (100µl/well) on the plate. Dose response curve for Anti-KIR3DL2 Antibody, hFc Tag with the EC50 of 0.47µg/ml determined by ELISA. See testing image for detail.

Target Details

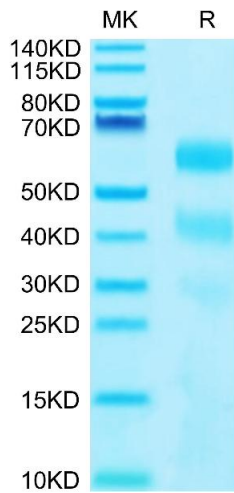
Target:	KIR3DL2
Alternative Name:	KIR3DL2 (KIR3DL2 Products)
Background:	KIR3DL2 is a member of the killer cell immunoglobulin-like receptor (KIR) family that was initially identified at the surface of natural killer (NK) cells. KIR3DL2, also known as CD158k, is expressed as a disulfide-linked homodimer. Each chain is composed of three immunoglobulin-like domains and a long cytoplasmic tail containing two immunoreceptor tyrosine-based inhibitory motifs.
Molecular Weight:	37.9 kDa. Due to glycosylation, the protein migrates to 40-70 kDa based on Tris-Bis PAGE result.

Application Details

Restrictions:	For Research Use only
---------------	-----------------------

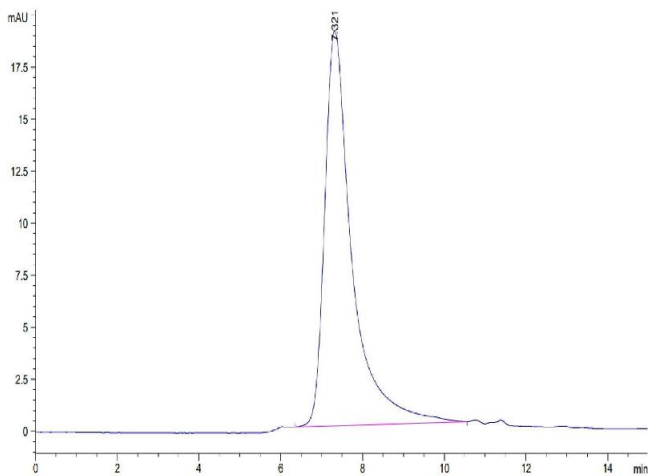
Handling

Format:	Lyophilized
Reconstitution:	Centrifuge the tube before opening. Reconstituting to a concentration more than 100 µg/mL is recommended. Dissolve the lyophilized protein in distilled water.
Buffer:	Lyophilized from 0.22µm filtered solution in PBS (pH 7.4). Normally 8 % trehalose is added as protectant before lyophilization.
Storage:	-20 °C,-80 °C
Storage Comment:	-20 to -80°C for 12 months as supplied from date of receipt., -80°C for 3-6 months after reconstitution., 2-8°C for 2-7 days after reconstitution., Recommend to aliquot the protein into smaller quantities for optimal storage. Please minimize freeze-thaw cycles.
Expiry Date:	12 months



SDS-PAGE

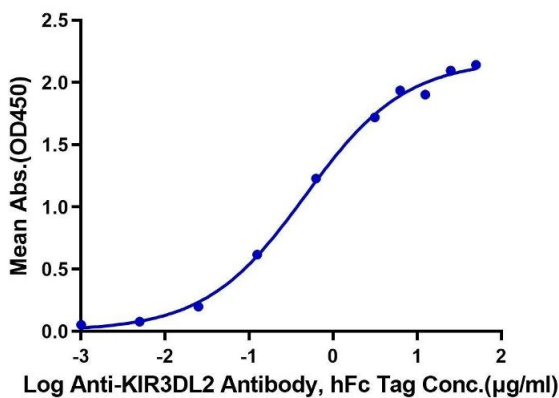
Image 1. Human KIR3DL2 on Tris-Bis PAGE under reduced conditions. The purity is greater than 95 % .



Size-exclusion chromatography-High Pressure Liquid Chromatography

Image 2. The purity of Human KIR3DL2 is greater than 95 % as determined by SEC-HPLC.

Human KIR3DL2, His Tag ELISA
0.2µg Human KIR3DL2, His Tag Per Well



ELISA

Image 3. Immobilized Human KIR3DL2, His Tag at 2 µg/mL (100 µL/well) on the plate. Dose response curve for Anti-KIR3DL2 Antibody, hFc Tag with the EC₅₀ of 0.47 µg/mL determined by ELISA.