



[Go to Product page](#)

Datasheet for ABIN7275125

## LAMP5 Protein (AA 30-235) (His tag)

### 2 Images

#### Overview

Quantity:	100 µg
Target:	LAMP5
Protein Characteristics:	AA 30-235
Origin:	Human
Source:	HEK-293 Cells
Protein Type:	Recombinant
Purification tag / Conjugate:	This LAMP5 protein is labelled with His tag.

#### Product Details

Purpose:	Human LAMP5 Protein
Sequence:	Glu30-Glu235
Characteristics:	Recombinant Human LAMP5 Protein is expressed from HEK293 with His tag at the C-Terminus. It contains Glu30-Glu235.
Purity:	> 95 % as determined by Tris-Bis PAGE, > 95 % as determined by HPLC
Sterility:	0.22 µm filtered
Endotoxin Level:	Less than 1EU per µg by the LAL method.

#### Target Details

Target:	LAMP5
Alternative Name:	LAMP5 ( <a href="#">LAMP5 Products</a> )

## Target Details

---

**Background:** Lysosome-associated membrane protein 5 (LAMP5) is a mammalian ortholog of the *Caenorhabditis elegans* protein, UNC-46, which functions as a sorting factor to localize the vesicular GABA transporter UNC-47 to synaptic vesicles. LAMP5 deficiency led to a larger intensity-dependent increase of wave I, II and V peak amplitude of auditory brainstem response. LAMP5 plays a pivotal role in sensorimotor processing in the brainstem and spinal cord.

**Molecular Weight:** 24.17 kDa. Due to glycosylation, the protein migrates to 30-40 kDa based on Tris-Bis PAGE result.

## Application Details

---

**Restrictions:** For Research Use only

## Handling

---

**Format:** Lyophilized

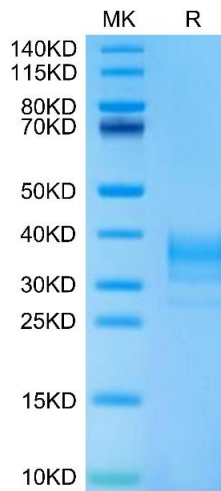
**Reconstitution:** Centrifuge the tube before opening. Reconstituting to a concentration more than 100 µg/mL is recommended. Dissolve the lyophilized protein in distilled water.

**Buffer:** Lyophilized from 0.22µm filtered solution in PBS (pH 7.4). Normally 8 % trehalose is added as protectant before lyophilization.

**Storage:** -20 °C, -80 °C

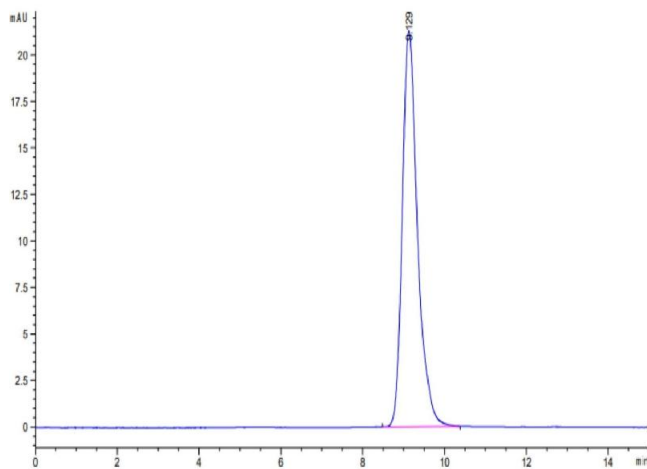
**Storage Comment:** -20 to -80°C for 12 months as supplied from date of receipt., -80°C for 3-6 months after reconstitution., -2-8°C for 2-7 days after reconstitution., Recommend to aliquot the protein into smaller quantities for optimal storage. Please minimize freeze-thaw cycles.

**Expiry Date:** 12 months



### SDS-PAGE

**Image 1.** Human LAMP5 on Tris-Bis PAGE under reduced condition. The purity is greater than 95 % .



### Size-exclusion chromatography-High Pressure Liquid Chromatography

**Image 2.** The purity of Human LAMP5 is greater than 95 % as determined by SEC-HPLC.