



[Go to Product page](#)

Datasheet for ABIN7275141

## Leptin Receptor Protein (LEPR) (AA 22-839) (His tag)

### 1 Image

#### Overview

Quantity:	100 µg
Target:	Leptin Receptor (LEPR)
Protein Characteristics:	AA 22-839
Origin:	Human
Source:	HEK-293 Cells
Protein Type:	Recombinant
Purification tag / Conjugate:	This Leptin Receptor protein is labelled with His tag.

#### Product Details

Purpose:	Human LEPR Protein
Sequence:	Phe22-Asp839
Characteristics:	Recombinant Human LEPR Protein is expressed from HEK293 with His tag at the C-Terminus. It contains Phe22-Asp839.
Purity:	> 95 % as determined by Tris-Bis PAGE
Sterility:	0.22 µm filtered
Endotoxin Level:	Less than 1EU per µg by the LAL method.

#### Target Details

Target:	Leptin Receptor (LEPR)
Alternative Name:	LEPR ( <a href="#">LEPR Products</a> )

## Target Details

---

Background:	Leptin receptor is a fundamental regulator in physiological functions of the regulation of food intake, energy homeostasis, immune function, and reproduction as well as on ovarian follicular cells on the placenta and lactating mammary glands.
Molecular Weight:	94.59 kDa. Due to glycosylation, the protein migrates to 120-150 kDa based on Tris-Bis PAGE result.
Pathways:	<a href="#">JAK-STAT Signaling</a> , <a href="#">AMPK Signaling</a> , <a href="#">Feeding Behaviour</a>

## Application Details

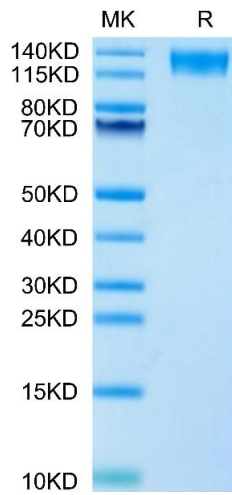
---

Restrictions:	For Research Use only
---------------	-----------------------

## Handling

---

Format:	Lyophilized
Reconstitution:	Centrifuge the tube before opening. Reconstituting to a concentration more than 100 µg/mL is recommended. Dissolve the lyophilized protein in distilled water.
Buffer:	Lyophilized from 0.22µm filtered solution in PBS ( pH 7.4). Normally 8 % trehalose is added as protectant before lyophilization.
Storage:	-20 °C,-80 °C
Storage Comment:	-20 to -80°C for 12 months as supplied from date of receipt.,-80°C for 3-6 months after reconstitution.,2-8°C for 2-7 days after reconstitution.,Recommend to aliquot the protein into smaller quantities for optimal storage. Please minimize freeze-thaw cycles.
Expiry Date:	12 months



### SDS-PAGE

**Image 1.** Human LEPR on Tris-Bis PAGE under reduced condition. The purity is greater than 95 % .