

Datasheet for ABIN7275142

**Leptin Protein (LEP) (AA 22-167) (Fc Tag)****2** Images[Go to Product page](#)

## Overview

Quantity:	100 µg
Target:	Leptin (LEP)
Protein Characteristics:	AA 22-167
Origin:	Mouse
Source:	HEK-293 Cells
Protein Type:	Recombinant
Purification tag / Conjugate:	This Leptin protein is labelled with Fc Tag.

## Product Details

Purpose:	Mouse Leptin Protein
Sequence:	Val22-Cys167
Characteristics:	Recombinant Mouse Leptin Protein is expressed from HEK293 with hFc tag at the C-Terminus. It contains Val22-Cys167.
Purity:	> 95 % as determined by Tris-Bis PAGE, > 95 % as determined by HPLC
Sterility:	0.22 µm filtered
Endotoxin Level:	Less than 1EU per µg by the LAL method.

## Target Details

Target:	Leptin (LEP)
Alternative Name:	Leptin ( <a href="#">LEP Products</a> )

## Target Details

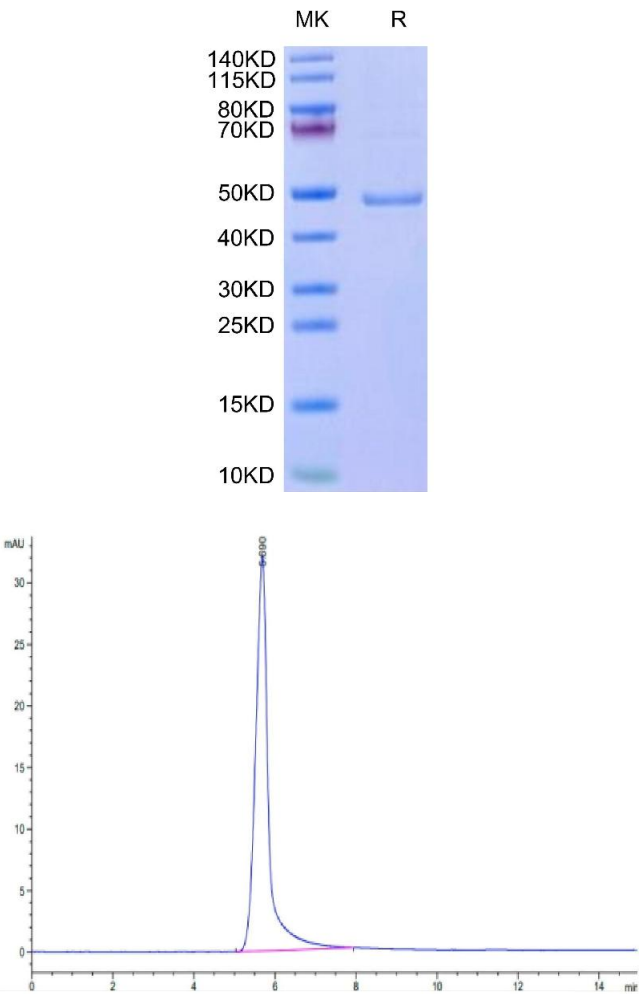
Background:	Leptin has key roles in the regulation of energy balance, body weight, metabolism, and endocrine function. Leptin levels are undetectable or very low in patients with lipodystrophy, hypothalamic amenorrhea, and congenital leptin deficiency (CLD) due to mutations in the leptin gene.
Molecular Weight:	42.76 kDa. Due to glycosylation, the protein migrates to 45-50 kDa based on Tris-Bis PAGE result.
UniProt:	<a href="#">P41160</a>
Pathways:	<a href="#">JAK-STAT Signaling</a> , <a href="#">AMPK Signaling</a> , <a href="#">Hormone Transport</a> , <a href="#">Peptide Hormone Metabolism</a> , <a href="#">Hormone Activity</a> , <a href="#">Negative Regulation of Hormone Secretion</a> , <a href="#">Regulation of Carbohydrate Metabolic Process</a> , <a href="#">Feeding Behaviour</a> , <a href="#">Monocarboxylic Acid Catabolic Process</a>

## Application Details

Restrictions:	For Research Use only
---------------	-----------------------

## Handling

Format:	Lyophilized
Reconstitution:	Centrifuge the tube before opening. Reconstituting to a concentration more than 100 µg/mL is recommended. Dissolve the lyophilized protein in distilled water.
Buffer:	Lyophilized from 0.22µm filtered solution in PBS ( pH 7.4). Normally 8 % trehalose is added as protectant before lyophilization.
Storage:	-20 °C,-80 °C
Storage Comment:	-20 to -80°C for 12 months as supplied from date of receipt.,-80°C for 3-6 months after reconstitution.,2-8°C for 2-7 days after reconstitution.,Recommend to aliquot the protein into smaller quantities for optimal storage. Please minimize freeze-thaw cycles.
Expiry Date:	12 months



SDS-PAGE

**Image 1.** Mouse Leptin on Tris-Bis PAGE under reduced condition. The purity is greater than 95 % .

Size-exclusion chromatography-High Pressure Liquid Chromatography

**Image 2.** The purity of Mouse Leptin is greater than 95 % as determined by SEC-HPLC.