

Datasheet for ABIN7275151
LIF Protein (AA 23-202)

3 Images

[Go to Product page](#)

Overview

Quantity:	100 µg
Target:	LIF
Protein Characteristics:	AA 23-202
Origin:	Human
Source:	HEK-293 Cells
Protein Type:	Recombinant

Product Details

Purpose:	Human LIF Protein
Sequence:	Ser23-Phe202
Characteristics:	Recombinant Human LIF Protein is expressed from HEK293 without tag. It contains Ser23-Phe202.
Purity:	> 95 % as determined by Tris-Bis PAGE, > 95 % as determined by HPLC
Sterility:	0.22 µm filtered
Endotoxin Level:	Less than 1EU per µg by the LAL method.
Biological Activity Comment:	Immobilized Human LIF at 1µg/ml (100µl/Well) on the plate. Dose response curve for Human LIF R, hFc Tag with the EC50 of 0.39µg/ml determined by ELISA. See testing image for detail.

Target Details

Target:	LIF
---------	-----

Target Details

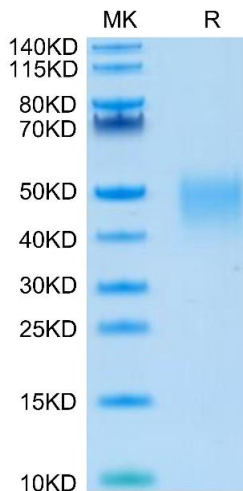
Alternative Name:	LIF (LIF Products)
Background:	Leukemia inhibitory factor (LIF) has played a vital role in a series of reproductive events, including follicle growth, embryo growth and differentiation. However, it is unclear whether the level of LIF in embryo culture medium can be used as a marker for clinical pregnancy.
Molecular Weight:	19.7 kDa. Due to glycosylation, the protein migrates to 40-55 kDa based on Tris-Bis PAGE result.
Pathways:	JAK-STAT Signaling , Positive Regulation of Peptide Hormone Secretion , Negative Regulation of Hormone Secretion , Stem Cell Maintenance , Growth Factor Binding

Application Details

Restrictions:	For Research Use only
---------------	-----------------------

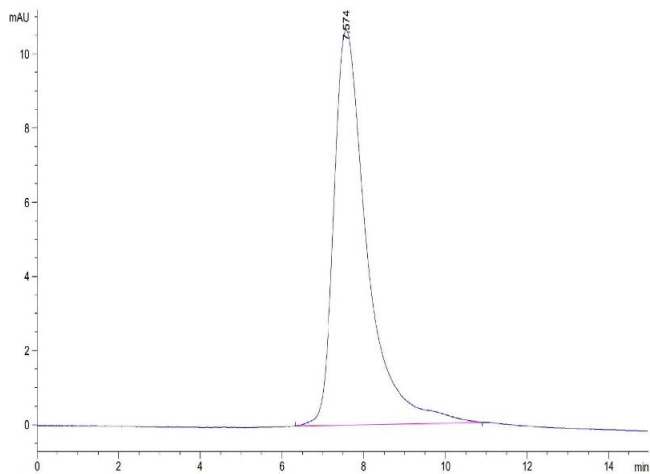
Handling

Format:	Lyophilized
Reconstitution:	Centrifuge the tube before opening. Reconstituting to a concentration more than 100 µg/mL is recommended. Dissolve the lyophilized protein in distilled water.
Buffer:	Lyophilized from 0.22µm filtered solution in PBS (pH 7.4). Normally 8 % trehalose is added as protectant before lyophilization.
Storage:	-20 °C,-80 °C
Storage Comment:	-20 to -80°C for 12 months as supplied from date of receipt., -80°C for 3-6 months after reconstitution., 2-8°C for 2-7 days after reconstitution., Recommend to aliquot the protein into smaller quantities for optimal storage. Please minimize freeze-thaw cycles.
Expiry Date:	12 months



SDS-PAGE

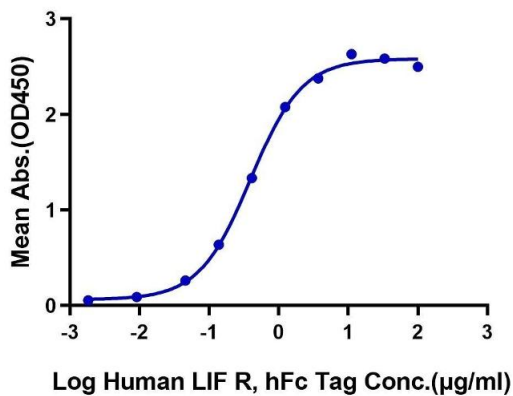
Image 1. Human LIF on Tris-Bis PAGE under reduced condition. The purity is greater than 95 % .



Size-exclusion chromatography-High Pressure Liquid Chromatography

Image 2. The purity of Human LIF is greater than 95 % as determined by SEC-HPLC.

Human LIF, No Tag ELISA
0.1µg Human LIF, No Tag Per Well



ELISA

Image 3. Immobilized Human LIF at 1 µg/mL (100 µL/Well) on the plate. Dose response curve for Human LIF R, hFc Tag with the EC50 of 0.39 µg/mL determined by ELISA.