



[Go to Product page](#)

Datasheet for ABIN7275163

LILRB1 Protein (AA 1-474) (Fc Tag)

4 Images

Overview

Quantity:	100 µg
Target:	LILRB1
Protein Characteristics:	AA 1-474
Origin:	Rhesus Monkey
Source:	HEK-293 Cells
Protein Type:	Recombinant
Purification tag / Conjugate:	This LILRB1 protein is labelled with Fc Tag.

Product Details

Purpose:	Rhesus macaque LILRB1/CD85j/ILT2 Protein
Sequence:	Met1-His474
Characteristics:	Recombinant Rhesus macaque LILRB1/CD85j/ILT2 Protein is expressed from HEK293 with hFc tag at the C-Terminus.It contains Met1-His474.
Purity:	> 95 % as determined by Tris-Bis PAGE,> 95 % as determined by HPLC
Sterility:	0.22 µm filtered
Endotoxin Level:	Less than 1EU per µg by the LAL method.
Biological Activity Comment:	The affinity constant of 1.74 nM as determined in SPR assay (Biacore T200). See testing image for detail.

Target Details

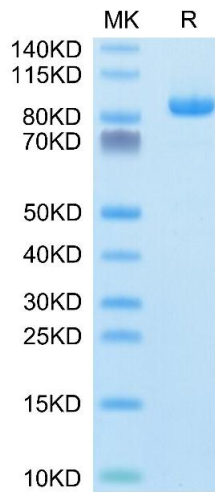
Target:	LILRB1
Alternative Name:	LILRB1 (LILRB1 Products)
Background:	LILRB1, also known as CD85j and ILT2, is a 110 kDa transmembrane glycoprotein in the LILR immunoregulatory protein family. Mature human LILRB1 consists of a 438 amino acid (aa) extracellular domain (ECD) with 4 tandem Ig-like domains, a 21 aa transmembrane segment, and a 168 aa cytoplasmic domain with 4 inhibitory ITIM motifs. LILRB1 is a receptor for class I MHC antigens. Recognizes a broad spectrum of HLA-A, HLA-B, HLA-C, HLA-G and HLA-F alleles. Receptor for H301/UL18, a human cytomegalovirus class I MHC homolog. Ligand binding results in inhibitory signals and down-regulation of the immune response.
Molecular Weight:	75.2 kDa. Due to glycosylation, the protein migrates to 80-90 kDa based on Tris-Bis PAGE result.
NCBI Accession:	NP_001035762
Pathways:	Cellular Response to Molecule of Bacterial Origin , Regulation of Leukocyte Mediated Immunity , Positive Regulation of Immune Effector Process , Production of Molecular Mediator of Immune Response

Application Details

Restrictions:	For Research Use only
---------------	-----------------------

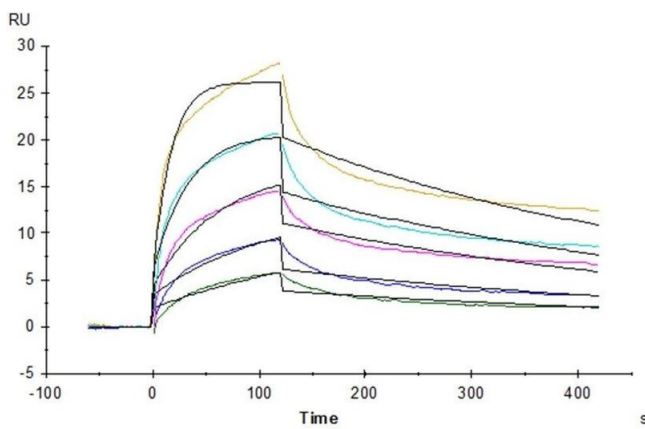
Handling

Format:	Lyophilized
Reconstitution:	Centrifuge the tube before opening. Reconstituting to a concentration more than 100 µg/mL is recommended. Dissolve the lyophilized protein in distilled water.
Buffer:	Lyophilized from 0.22µm filtered solution in PBS (pH 7.4). Normally 8 % trehalose is added as protectant before lyophilization.
Storage:	-20 °C,-80 °C
Storage Comment:	-20 to -80°C for 12 months as supplied from date of receipt.,-80°C for 3-6 months after reconstitution.,2-8°C for 2-7 days after reconstitution.,Recommend to aliquot the protein into smaller quantities for optimal storage. Please minimize freeze-thaw cycles.
Expiry Date:	12 months



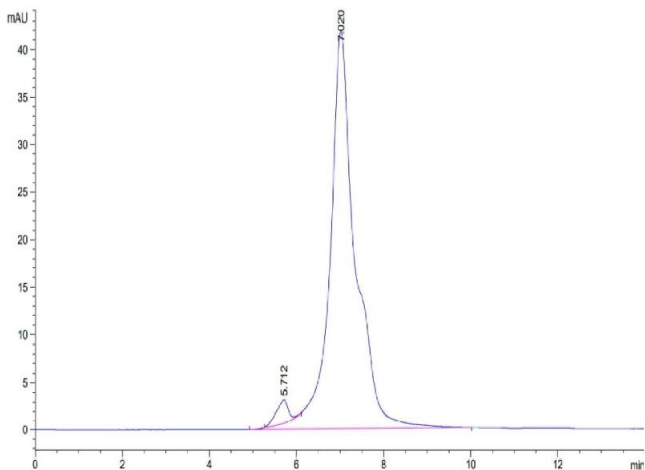
SDS-PAGE

Image 1. Rhesus macaque LILRB1 on Tris-Bis PAGE under reduced condition. The purity is greater than 95 % .



Surface Plasmon Resonance

Image 2. Rhesus macaque LILRB1, hFc Tag captured on CM5 Chip via Protein A can bind Rhesus macaque HLA-G Complex Tetramer, His Tag with an affinity constant of 1.74 nM as determined in SPR assay (Biacore T200).



Size-exclusion chromatography-High Pressure Liquid Chromatography

Image 3. The purity of Rhesus macaque LILRB1/CD85j/ILT2 is greater than 95 % as determined by SEC-HPLC.

Please check the [product details page](#) for more images. Overall 4 images are available for ABIN7275163.