

Datasheet for ABIN7275168

LILRB1 Protein (Fc Tag)

4 Images

[Go to Product page](#)

Overview

Quantity:	100 µg
Target:	LILRB1
Origin:	Human
Source:	HEK-293 Cells
Protein Type:	Recombinant
Purification tag / Conjugate:	This LILRB1 protein is labelled with Fc Tag.

Product Details

Sequence:	Gly24-His458
Purity:	> 95% as determined by Tris-Bis PAGE,> 95% as determined by HPLC
Sterility:	0.22 µm filtered
Endotoxin Level:	Less than 1EU per µg by the LAL method.
Biological Activity Comment:	Immobilized Human LILRB1, hFc Tag at 1µg/ml (100µl/Well) on the plate. Dose response curve for Biotinylated Anti-LILRB1 Antibody, hFc Tag with the EC50 of 16.7ng/ml determined by ELISA. The affinity constant of 1.49nM as determined in SPR assay (Biacore T200). See testing image for detail.

Target Details

Target:	LILRB1
Alternative Name:	LILRB1 (LILRB1 Products)
Background:	ILT2, ILT-2, ILT2FLJ37515, LILRB1, LIR1, MIR7, CD85J, XXbac-BCX85G21.4,LILRB1, also known

Target Details

as CD85j and ILT2, is a 110 kDa transmembrane glycoprotein in the LILR immunoregulatory protein family. Mature human LILRB1 consists of a 438 amino acid (aa) extracellular domain (ECD) with 4 tandem Ig-like domains, a 21 aa transmembrane segment, and a 168 aa cytoplasmic domain with 4 inhibitory ITIM motifs. LILRB1 is a receptor for class I MHC antigens. Recognizes a broad spectrum of HLA-A, HLA-B, HLA-C, HLA-G and HLA-F alleles. Receptor for H301/UL18, a human cytomegalovirus class I MHC homolog. Ligand binding results in inhibitory signals and down-regulation of the immune response.

Molecular Weight: 73.8 kDa. Due to glycosylation, the protein migrates to 78-105 kDa based on Tris-Bis PAGE result.

Pathways: [Cellular Response to Molecule of Bacterial Origin](#), [Regulation of Leukocyte Mediated Immunity](#), [Positive Regulation of Immune Effector Process](#), [Production of Molecular Mediator of Immune Response](#)

Application Details

Restrictions: For Research Use only

Handling

Format: Lyophilized

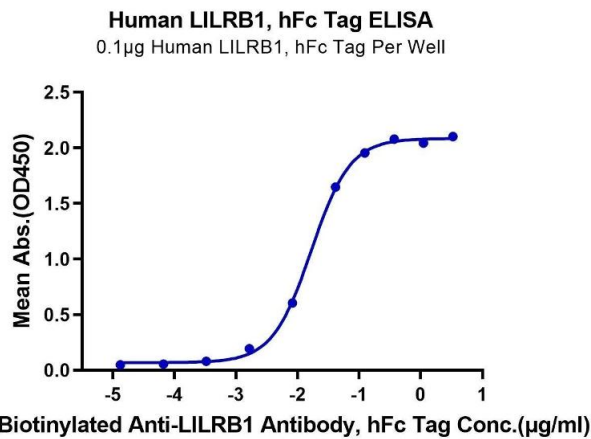
Reconstitution: Centrifuge tubes before opening. Reconstituting to a concentration more than 100 µg/mL is recommended (usually we use 1 mg/mL solution for lyophilization). Dissolve the lyophilized protein in distilled water.

Buffer: Lyophilized from 0.22µm filtered solution in PBS (pH 7.4). Normally 5 % trehalose is added as protectant before lyophilization.

Storage: 4 °C, -80 °C

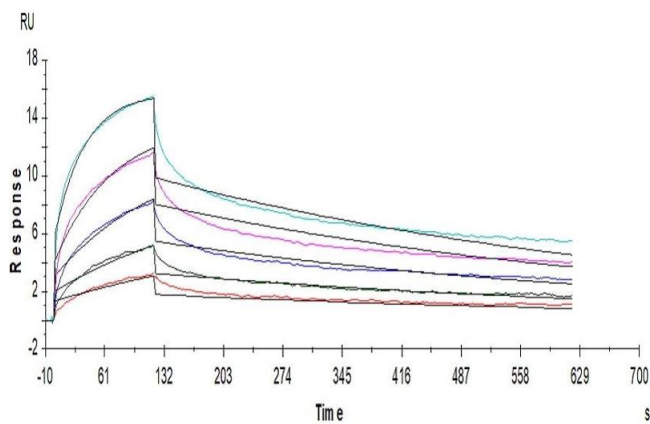
Storage Comment: Reconstituted protein stable at -80°C for 12 months, 4°C for 1 week. Use a manual defrost freezer and avoid repeated freeze-thaw cycles.

Expiry Date: 12 months



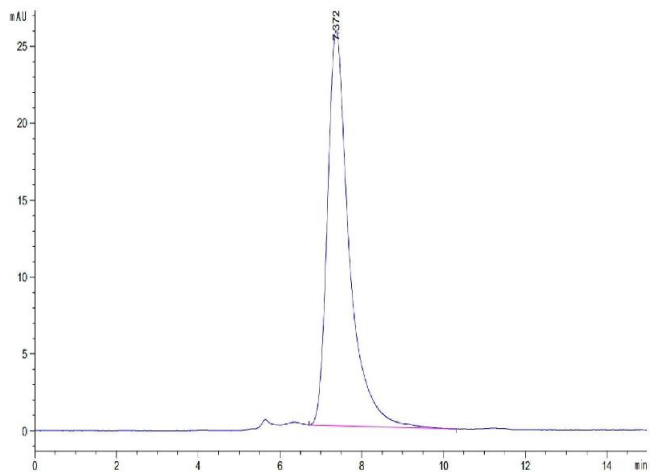
ELISA

Image 1. Immobilized Human LILRB1, hFc Tag at 1 µg/mL (100 µL/Well) on the plate. Dose response curve for Biotinylated Anti-LILRB1 Antibody, hFc Tag with the EC50 of 16.7 ng/mL determined by ELISA.



Surface Plasmon Resonance

Image 2. Human LILRB1, hFc Tag captured on Protein A Chip can bind Human HLA-G Tetramer, His Tag with an affinity constant of 1.49nM as determined in SPR assay (Biacore T200).



Size-exclusion chromatography-High Pressure Liquid Chromatography

Image 3. The purity of Human LILRB1 is greater than 95 % as determined by SEC-HPLC.

Please check the [product details page](#) for more images. Overall 4 images are available for ABIN7275168.