

Datasheet for ABIN7275172

**LILRB2 Protein (AA 22-458) (mFc Tag)**

5 Images

[Go to Product page](#)

## Overview

Quantity:	100 µg
Target:	LILRB2
Protein Characteristics:	AA 22-458
Origin:	Human
Source:	HEK-293 Cells
Protein Type:	Recombinant
Purification tag / Conjugate:	This LILRB2 protein is labelled with mFc Tag.

## Product Details

Purpose:	Human LILRB2/CD85d/ILT4 Protein
Sequence:	Gln22-His458
Characteristics:	Recombinant Human LILRB2/CD85d/ILT4 Protein is expressed from HEK293 with mFc (IgG1) tag at the C-Terminus.It contains Gln22-His458.
Purity:	> 95 % as determined by Tris-Bis PAGE,> 95 % as determined by HPLC
Sterility:	0.22 µm filtered
Endotoxin Level:	Less than 1EU per µg by the LAL method.
Biological Activity Comment:	Immobilized Human LILRB2, mFc Tag at 0.5µg/ml (100µl/well) on the plate. Dose response curve for Anti-LILRB2 Antibody, hFc Tag with the EC50 of 11.4ng/ml determined by ELISA. See testing image for detail.

## Target Details

Target:	LILRB2
Alternative Name:	LILRB2 ( <a href="#">LILRB2 Products</a> )
Background:	The immunoglobulin-like transcript (ILT) comprise a family of activating and inhibitory type immunoreceptors whose genes are located in the same locus that encodes killer cell Ig-like receptors (KIR). ILT4, also known as LIR-2 and LILRB2, is a type I transmembrane protein expressed primarily on monocytes and dendritic cells (DC). LILRB2 is a receptor for class I MHC antigens. Recognizes a broad spectrum of HLA-A, HLA-B, HLA-C, HLA-G and HLA-F alleles.
Molecular Weight:	73.6 kDa. Due to glycosylation, the protein migrates to 80-110 kDa based on Tris-Bis PAGE result.
Pathways:	<a href="#">Cellular Response to Molecule of Bacterial Origin</a>

## Application Details

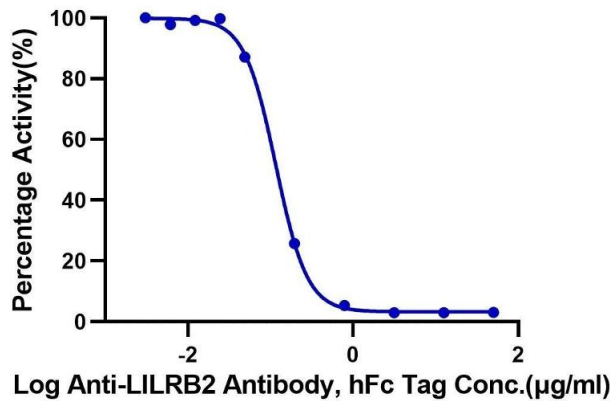
Restrictions:	For Research Use only
---------------	-----------------------

## Handling

Format:	Lyophilized
Reconstitution:	Centrifuge the tube before opening. Reconstituting to a concentration more than 100 µg/mL is recommended. Dissolve the lyophilized protein in distilled water.
Buffer:	Lyophilized from 0.22µm filtered solution in PBS ( pH 7.4). Normally 8 % trehalose is added as protectant before lyophilization.
Storage:	-20 °C,-80 °C
Storage Comment:	-20 to -80°C for 12 months as supplied from date of receipt., -80°C for 3-6 months after reconstitution., 2-8°C for 2-7 days after reconstitution., Recommend to aliquot the protein into smaller quantities for optimal storage. Please minimize freeze-thaw cycles.
Expiry Date:	12 months

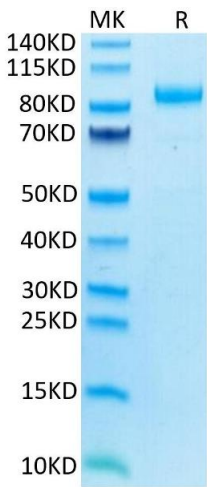
**Inhibition of Human LILRB2 and HLA-G Binding**

0.2µg Human LILRB2, mFc Tag Per Well



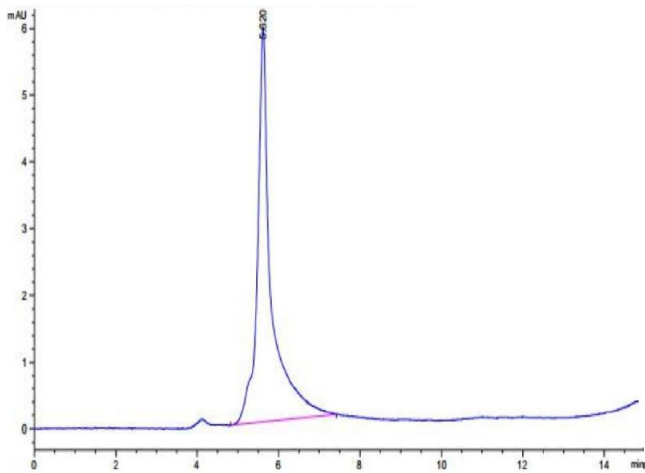
**Binding Studies**

**Image 1.** Serial dilutions of Anti-LILRB2 Antibody were added into Human HLA-G Complex Tetramer, His Tag : Human LILRB2, mFc Tag binding reactions. The half maximal inhibitory concentration (IC50) is 0.11 µg/mL.



**SDS-PAGE**

**Image 2.** Human LILRB2 on Tris-Bis PAGE under reduced condition. The purity is greater than 95 % .



**Size-exclusion chromatography-High Pressure Liquid Chromatography**

**Image 3.** The purity of Human LILRB2 is greater than 95 % as determined by SEC-HPLC.

Please check the [product details page](#) for more images. Overall 5 images are available for ABIN7275172.