

Datasheet for ABIN7275188

**LILRB2 Protein (His-Avi Tag,Biotin)**[Go to Product page](#)

## 4 Images

## Overview

Quantity:	100 µg
Target:	LILRB2
Origin:	Human
Source:	HEK-293 Cells
Protein Type:	Recombinant
Purification tag / Conjugate:	This LILRB2 protein is labelled with His-Avi Tag,Biotin.

## Product Details

Sequence:	Gln22-His458
Purity:	> 95% as determined by Tris-Bis PAGE,> 95% as determined by HPLC
Sterility:	0.22 µm filtered
Endotoxin Level:	Less than 1EU per µg by the LAL method.
Biological Activity Comment:	Immobilized Anti-LILRB2 Antibody, hFc Tag at 0.5µg/ml (100µl/well) on the plate. Dose response curve for Biotinylated Human LILRB2, His Tag with the EC50 of 72.6ng/ml determined by ELISA. See testing image for detail.

## Target Details

Target:	LILRB2
Alternative Name:	LILRB2 ( <a href="#">LILRB2 Products</a> )
Background:	CD85d, ILT4, ILT-4, ILT4CD85d, LILRB2, LIR2, MIR10,The immunoglobulin-like transcript (ILT) comprise a family of activating and inhibitory type immunoreceptors whose genes are located

## Target Details

in the same locus that encodes killer cell Ig-like receptors (KIR). ILT4, also known as LIR-2 and LILRB2, is a type I transmembrane protein expressed primarily on monocytes and dendritic cells (DC). LILRB2 is a receptor for class I MHC antigens. Recognizes a broad spectrum of HLA-A, HLA-B, HLA-C, HLA-G and HLA-F alleles.

Molecular Weight: 50.2 kDa. Due to glycosylation, the protein migrates to 70-75 kDa based on Tris-Bis PAGE result.

Pathways: [Cellular Response to Molecule of Bacterial Origin](#)

## Application Details

Restrictions: For Research Use only

## Handling

Format: Lyophilized

Reconstitution: Centrifuge tubes before opening. Reconstituting to a concentration more than 100 µg/mL is recommended (usually we use 1 mg/mL solution for lyophilization). Dissolve the lyophilized protein in distilled water.

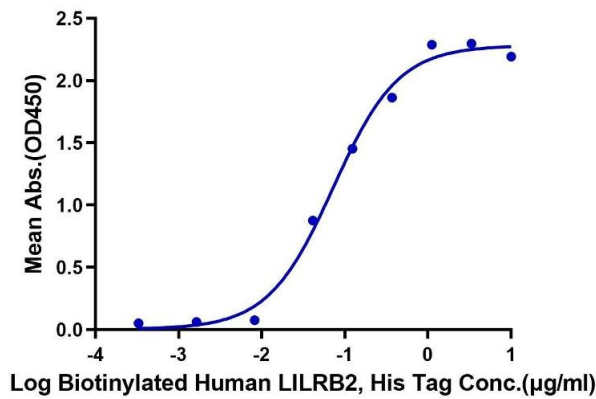
Buffer: Lyophilized from 0.22µm filtered solution in PBS ( pH 7.4). Normally 5 % trehalose is added as protectant before lyophilization.

Storage: 4 °C, -80 °C

Storage Comment: Reconstituted protein stable at -80°C for 12 months, 4°C for 1 week. Use a manual defrost freezer and avoid repeated freeze-thaw cycles.

Expiry Date: 12 months

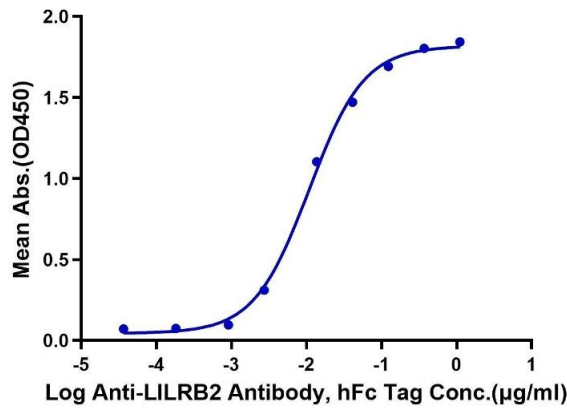
**Biotinylated Human LILRB2, His Tag ELISA**  
0.05µg Anti-LILRB2 Antibody, hFc Tag Per Well



**ELISA**

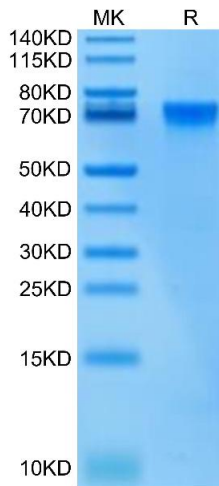
**Image 1.** Immobilized Anti-LILRB2 Antibody, hFc Tag at 0.5 µg/mL (100 µL/well) on the plate. Dose response curve for Biotinylated Human LILRB2, His Tag with the EC50 of 72.6 ng/mL determined by ELISA.

**Biotinylated Human LILRB2, His Tag ELISA**  
0.05µg Biotinylated Human LILRB2, His Tag Per Well



**ELISA**

**Image 2.** Immobilized Biotinylated Human LILRB2, His Tag at 0.5 µg/mL (100 µL/Well) on the plate. Dose response curve for Anti-LILRB2 Antibody, hFc Tag with the EC50 of 10.9 ng/mL determined by ELISA.



**SDS-PAGE**

**Image 3.** Biotinylated Human LILRB2 on Tris-Bis PAGE under reduced condition. The purity is greater than 95 % .

Please check the [product details page](#) for more images. Overall 4 images are available for ABIN7275188.