

Datasheet for ABIN7275189

**LILRB3 Protein (AA 24-443) (His-Avi Tag)****3** Images[Go to Product page](#)

## Overview

Quantity:	100 µg
Target:	LILRB3
Protein Characteristics:	AA 24-443
Origin:	Human
Source:	HEK-293 Cells
Protein Type:	Recombinant
Purification tag / Conjugate:	This LILRB3 protein is labelled with His-Avi Tag.

## Product Details

Purpose:	Human LILRB3/CD85a/ILT5 Protein
Sequence:	Gly24-Glu443
Characteristics:	Recombinant Human LILRB3/CD85a/ILT5 Protein is expressed from HEK293 with His tag and Avi tag at the C-Terminus. It contains Gly24-Glu443.
Purity:	> 95 % as determined by Tris-Bis PAGE, > 95 % as determined by HPLC
Sterility:	0.22 µm filtered
Endotoxin Level:	Less than 1EU per µg by the LAL method.
Biological Activity Comment:	Immobilized Human LILRB3, His Tag at 5µg/ml (100µl/well) on the plate. Dose response curve for Anti-LILRB3 Antibody, hFc Tag with the EC50 of 27.3ng/ml determined by ELISA. See testing image for detail.

## Target Details

Target:	LILRB3
Alternative Name:	LILRB3 ( <a href="#">LILRB3 Products</a> )
Background:	<p>Leukocyte immunoglobulin-like receptor subfamily B (LILRB3), also known as ILT5, LIR3, and CD85a, is an immunoglobulin superfamily member that is involved in immune regulation. Subfamily B members have cytoplasmic immunoreceptor tyrosine-based inhibitory motifs (ITIMs) that inhibit signaling events via phosphatase SHP-1. LILRB3 may act as receptor for class I MHC antigens. Becomes activated upon coligation of LILRB3 and immune receptors, such as FCGR2B and the B-cell receptor.</p>
Molecular Weight:	50 kDa. Due to glycosylation, the protein migrates to 60-72 kDa based on Tris-Bis PAGE result.

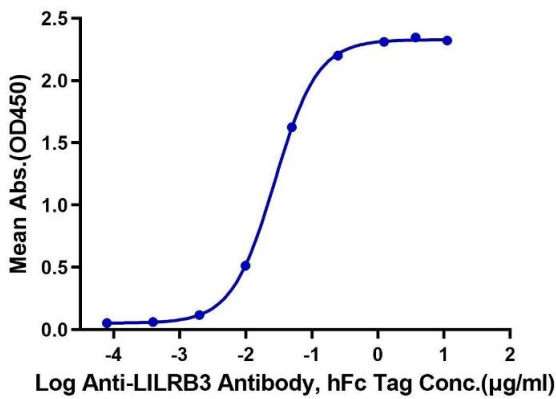
## Application Details

Restrictions:	For Research Use only
---------------	-----------------------

## Handling

Format:	Lyophilized
Reconstitution:	Centrifuge the tube before opening. Reconstituting to a concentration more than 100 µg/mL is recommended. Dissolve the lyophilized protein in distilled water.
Buffer:	Lyophilized from 0.22µm filtered solution in PBS ( pH 7.4). Normally 8 % trehalose is added as protectant before lyophilization.
Storage:	-20 °C,-80 °C
Storage Comment:	-20 to -80°C for 12 months as supplied from date of receipt., -80°C for 3-6 months after reconstitution., 2-8°C for 2-7 days after reconstitution., Recommend to aliquot the protein into smaller quantities for optimal storage. Please minimize freeze-thaw cycles.
Expiry Date:	12 months

**Human LILRB3, His Tag ELISA**  
0.5µg Human LILRB3, His Tag Per Well

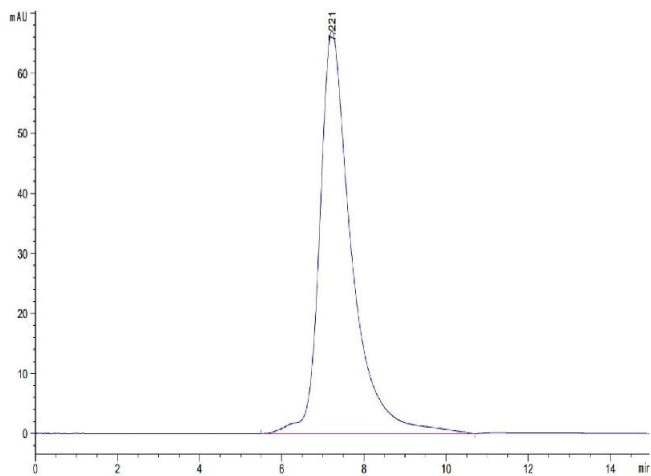


**ELISA**

**Image 1.** Immobilized Human LILRB3, His Tag at 5 µg/mL (100 µL/well) on the plate. Dose response curve for Anti-LILRB3 Antibody, hFc Tag with the EC<sub>50</sub> of 27.3 ng/mL determined by ELISA.

**Size-exclusion chromatography-High Pressure Liquid Chromatography**

**Image 2.** The purity of Human LILRB3 is greater than 95 % as determined by SEC-HPLC.



**SDS-PAGE**

**Image 3.** Human LILRB3 on Tris-Bis PAGE under reduced condition. The purity is greater than 95 % .

