



[Go to Product page](#)

Datasheet for ABIN7275199

## LYPD3 Protein (AA 31-286) (His tag)

### 3 Images

#### Overview

Quantity:	100 µg
Target:	LYPD3
Protein Characteristics:	AA 31-286
Origin:	Human
Source:	HEK-293 Cells
Protein Type:	Recombinant
Purification tag / Conjugate:	This LYPD3 protein is labelled with His tag.

#### Product Details

Purpose:	Human LYPD3 Protein
Sequence:	Leu31-His286
Characteristics:	Recombinant Human LYPD3 Protein is expressed from HEK293 with His tag at the C-Terminus. It contains Leu31-His286.
Purity:	> 95 % as determined by Tris-Bis PAGE, > 95 % as determined by HPLC
Sterility:	0.22 µm filtered
Endotoxin Level:	Less than 1EU per µg by the LAL method.
Biological Activity Comment:	Immobilized Human LYPD3, His Tag at 0.5µg/ml (100µl/Well) on the plate. Dose response curve for Anti-LYPD3 Ab., hFc Tag with the EC50 of 11.6ng/ml determined by ELISA. See testing image for detail.

## Target Details

---

Target:	LYPD3
Alternative Name:	LYPD3 ( <a href="#">LYPD3 Products</a> )
Background:	Aberrant expression of LYPD3 plays an oncogenic role in several types of cancer. LYPD3 was highly expressed in LUAD tumor compared with paracancerous tissues. Furthermore, the expression of LYPD3 was able to be regulated by the methylation in LYPD3 promoter region, which was positively associated with the overall survival. LYPD3 might affect the clinical manifestations of LUAD by regulating the P53 signaling pathway.
Molecular Weight:	27.8 kDa. Due to glycosylation, the protein migrates to 60-70 kDa based on Tris-Bis PAGE result.
UniProt:	<a href="#">O95274</a>

## Application Details

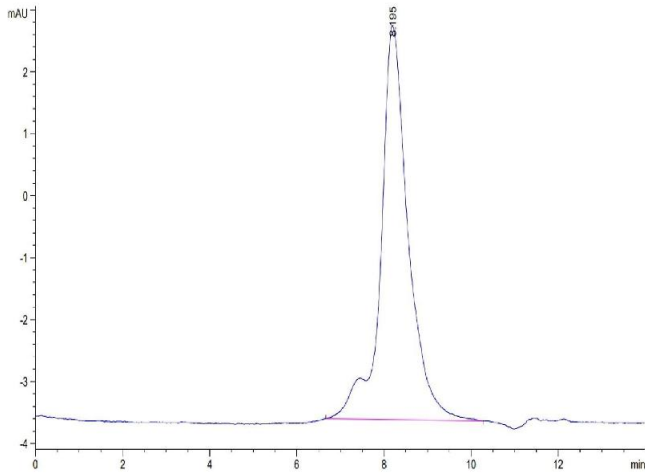
---

Restrictions:	For Research Use only
---------------	-----------------------

## Handling

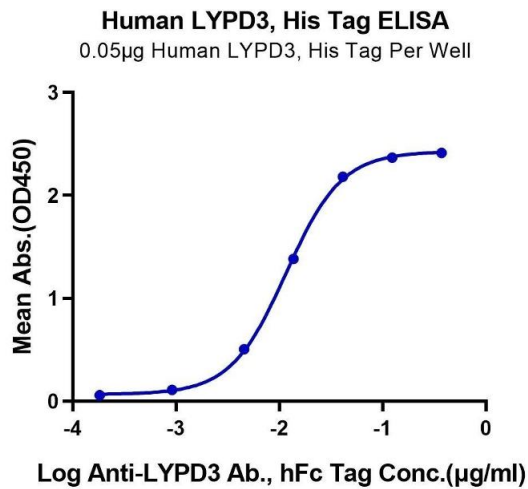
---

Format:	Lyophilized
Reconstitution:	Centrifuge the tube before opening. Reconstituting to a concentration more than 100 µg/mL is recommended. Dissolve the lyophilized protein in distilled water.
Buffer:	Lyophilized from 0.22µm filtered solution in PBS ( pH 7.4). Normally 8 % trehalose is added as protectant before lyophilization.
Storage:	-20 °C,-80 °C
Storage Comment:	-20 to -80°C for 12 months as supplied from date of receipt.,-80°C for 3-6 months after reconstitution.,2-8°C for 2-7 days after reconstitution.,Recommend to aliquot the protein into smaller quantities for optimal storage. Please minimize freeze-thaw cycles.
Expiry Date:	12 months



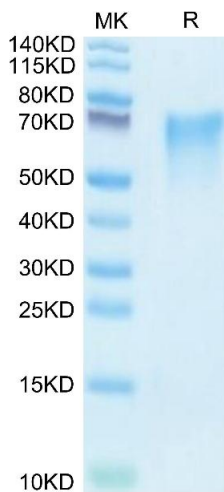
### Size-exclusion chromatography-High Pressure Liquid Chromatography

**Image 1.** The purity of Human LYPD3 is greater than 95 % as determined by SEC-HPLC.



### ELISA

**Image 2.** Immobilized Human LYPD3, His Tag at 0.5 µg/mL (100 µL/Well) on the plate. Dose response curve for Anti-LYPD3 Ab., hFc Tag with the EC50 of 11.6 ng/mL determined by ELISA.



### SDS-PAGE

**Image 3.** Human LYPD3 on Tris-Bis PAGE under reduced condition. The purity is greater than 95 % .