



[Go to Product page](#)

Datasheet for ABIN7275201

LRG1 Protein (AA 72-383) (His tag)

3 Images

Overview

Quantity:	100 µg
Target:	LRG1
Protein Characteristics:	AA 72-383
Origin:	Cynomolgus
Source:	HEK-293 Cells
Protein Type:	Recombinant
Purification tag / Conjugate:	This LRG1 protein is labelled with His tag.

Product Details

Purpose:	Cynomolgus LRG1 Protein
Sequence:	Val72-Gln383
Characteristics:	Recombinant Cynomolgus LRG1 Protein is expressed from HEK293 with His tag at the C-Terminus. It contains Val72-Gln383.
Purity:	> 95 % as determined by Tris-Bis PAGE, > 95 % as determined by HPLC
Sterility:	0.22 µm filtered
Endotoxin Level:	Less than 1EU per µg by the LAL method.
Biological Activity Comment:	Immobilized Cynomolgus LRG1, His Tag at 5µg/ml (100µl/well) on the plate. Dose response curve for Anti-LRG1 Antibody, hFc Tag with the EC50 of 0.34µg/ml determined by ELISA. See testing image for detail.

Target Details

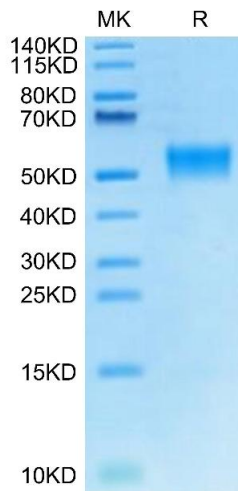
Target:	LRG1
Alternative Name:	LRG1 (LRG1 Products)
Background:	Diabetic nephropathy (DN) is an important public health concern of increasing proportions and the leading cause of end-stage renal disease (ESRD) in diabetic patients. It is one of the most common long-term microvascular complications of diabetes mellitus that is characterized by proteinuria and glomerular structural changes. LRG1 is a novel pro-angiogenic factors involved in the abnormal angiogenesis and renal fibrosis in DN.
Molecular Weight:	35.69 kDa. Due to glycosylation, the protein migrates to 50-60 kDa based on Tris-Bis PAGE result.
UniProt:	A0A2K5VVA4
Pathways:	Brown Fat Cell Differentiation

Application Details

Restrictions:	For Research Use only
---------------	-----------------------

Handling

Format:	Lyophilized
Reconstitution:	Centrifuge the tube before opening. Reconstituting to a concentration more than 100 µg/mL is recommended. Dissolve the lyophilized protein in distilled water.
Buffer:	Lyophilized from 0.22µm filtered solution in PBS (pH 7.4). Normally 8 % trehalose is added as protectant before lyophilization.
Storage:	-20 °C,-80 °C
Storage Comment:	-20 to -80°C for 12 months as supplied from date of receipt.,-80°C for 3-6 months after reconstitution.,2-8°C for 2-7 days after reconstitution.,Recommend to aliquot the protein into smaller quantities for optimal storage. Please minimize freeze-thaw cycles.
Expiry Date:	12 months

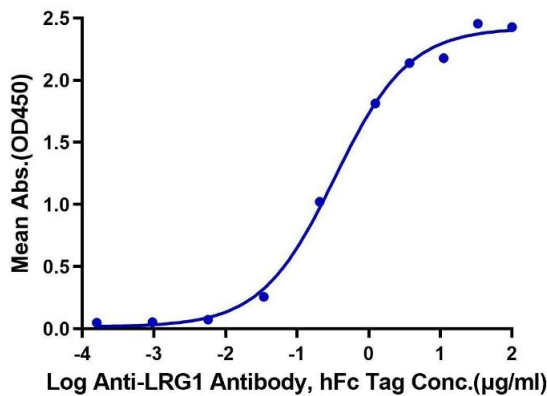


SDS-PAGE

Image 1. Cynomolgus LRG1 on Tris-Bis PAGE under reduced condition. The purity is greater than 95 % .

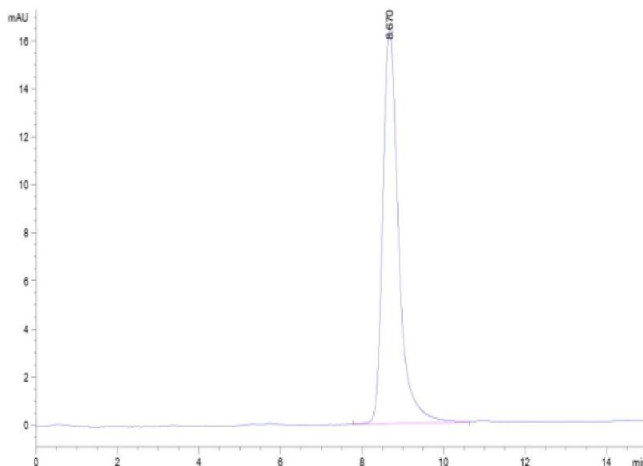
Cynomolgus LRG1, His Tag ELISA

0.5µg Cynomolgus LRG1, His Tag Per Well



ELISA

Image 2. Immobilized Cynomolgus LRG1, His Tag at 5 µg/mL (100 µL/well) on the plate. Dose response curve for Anti-LRG1 Antibody, hFc Tag with the EC50 of 0.34 µg/mL determined by ELISA.



Size-exclusion chromatography-High Pressure Liquid Chromatography

Image 3. The purity of Cynomolgus LRG1 is greater than 95 % as determined by SEC-HPLC.