



[Go to Product page](#)

Datasheet for ABIN7275203

## LRG1 Protein (AA 33-342) (His tag)

### 2 Images

#### Overview

Quantity:	100 µg
Target:	LRG1
Protein Characteristics:	AA 33-342
Origin:	Mouse
Source:	HEK-293 Cells
Protein Type:	Recombinant
Purification tag / Conjugate:	This LRG1 protein is labelled with His tag.

#### Product Details

Purpose:	Mouse LRG1 Protein
Sequence:	Leu33-Leu342
Characteristics:	Recombinant Mouse LRG1 Protein is expressed from HEK293 with His tag at the C-Terminus.It contains Leu33-Leu342.
Purity:	> 95 % as determined by Tris-Bis PAGE,> 95 % as determined by HPLC
Sterility:	0.22 µm filtered
Endotoxin Level:	Less than 1EU per µg by the LAL method.

#### Target Details

Target:	LRG1
Alternative Name:	LRG1 ( <a href="#">LRG1 Products</a> )

## Target Details

---

**Background:** Diabetic nephropathy (DN) is an important public health concern of increasing proportions and the leading cause of end-stage renal disease (ESRD) in diabetic patients. It is one of the most common long-term microvascular complications of diabetes mellitus that is characterized by proteinuria and glomerular structural changes. LRG1 is a novel pro-angiogenic factors involved in the abnormal angiogenesis and renal fibrosis in DN.

**Molecular Weight:** 34.9 kDa. Due to glycosylation, the protein migrates to 48-52 kDa based on Tris-Bis PAGE result.

**UniProt:** [Q91XL1](#)

**Pathways:** [Brown Fat Cell Differentiation](#)

## Application Details

---

**Restrictions:** For Research Use only

## Handling

---

**Format:** Lyophilized

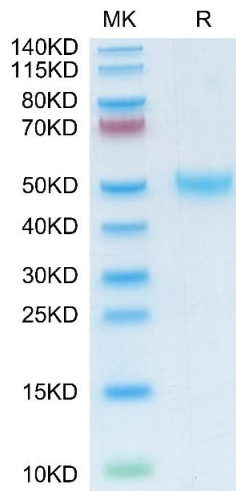
**Reconstitution:** Centrifuge the tube before opening. Reconstituting to a concentration more than 100 µg/mL is recommended. Dissolve the lyophilized protein in distilled water.

**Buffer:** Lyophilized from 0.22µm filtered solution in PBS ( pH 7.4). Normally 8 % trehalose is added as protectant before lyophilization.

**Storage:** -20 °C,-80 °C

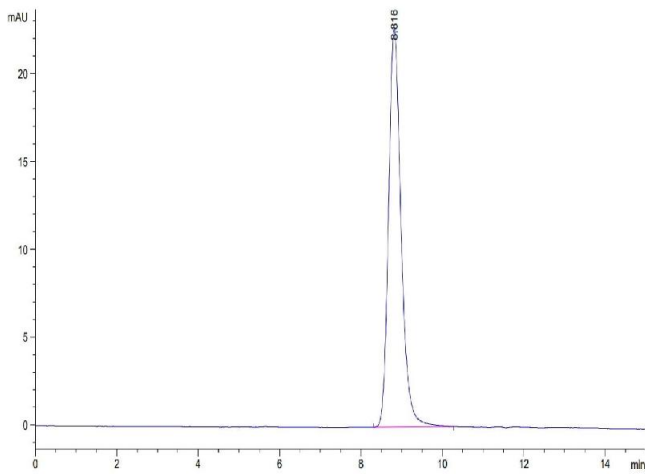
**Storage Comment:** -20 to -80°C for 12 months as supplied from date of receipt.,-80°C for 3-6 months after reconstitution.,2-8°C for 2-7 days after reconstitution.,Recommend to aliquot the protein into smaller quantities for optimal storage. Please minimize freeze-thaw cycles.

**Expiry Date:** 12 months



### SDS-PAGE

**Image 1.** Mouse LRG1 on Tris-Bis PAGE under reduced condition. The purity is greater than 95 % .



### Size-exclusion chromatography-High Pressure Liquid Chromatography

**Image 2.** The purity of Mouse LRG1 is greater than 95 % as determined by SEC-HPLC.