

Datasheet for ABIN7275207

LRP10 Protein (AA 17-440) (His tag)[Go to Product page](#)**1** Image

Overview

Quantity:	100 µg
Target:	LRP10
Protein Characteristics:	AA 17-440
Origin:	Human
Source:	HEK-293 Cells
Protein Type:	Recombinant
Purification tag / Conjugate:	This LRP10 protein is labelled with His tag.

Product Details

Purpose:	Human LRP10 Protein
Sequence:	His17-Lys440
Characteristics:	Recombinant Human LRP10 Protein is expressed from HEK293 with His tag at the C-Terminus. It contains His17-Lys440.
Purity:	> 95 % as determined by Tris-Bis PAGE
Sterility:	0.22 µm filtered
Endotoxin Level:	Less than 1EU per µg by the LAL method.

Target Details

Target:	LRP10
Alternative Name:	LRP10 (LRP10 Products)

Target Details

Background:	LDL receptor-related protein (LRP) 10 was recently identified as a Parkinson's disease gene through genome-wide linkage and sequencing analysis, but its role in Parkinson's disease in various populations is still unclear.
Molecular Weight:	47.14 kDa. Due to glycosylation, the protein migrates to 60-70 kDa based on Tris-Bis PAGE result.

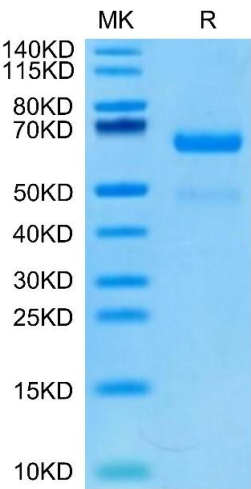
Application Details

Restrictions:	For Research Use only
---------------	-----------------------

Handling

Format:	Lyophilized
Reconstitution:	Centrifuge the tube before opening. Reconstituting to a concentration more than 100 µg/mL is recommended. Dissolve the lyophilized protein in distilled water.
Buffer:	Lyophilized from 0.22µm filtered solution in PBS (pH 7.4). Normally 8 % trehalose is added as protectant before lyophilization.
Storage:	-20 °C,-80 °C
Storage Comment:	-20 to -80°C for 12 months as supplied from date of receipt.,-80°C for 3-6 months after reconstitution.,2-8°C for 2-7 days after reconstitution.,Recommend to aliquot the protein into smaller quantities for optimal storage. Please minimize freeze-thaw cycles.
Expiry Date:	12 months

Images



SDS-PAGE

Image 1. Human LRP10 on Tris-Bis PAGE under reduced condition. The purity is greater than 95 % .