

Datasheet for ABIN7275210

LRP6 Protein (AA 20-630) (mFc Tag)**3** Images[Go to Product page](#)

Overview

Quantity:	100 µg
Target:	LRP6
Protein Characteristics:	AA 20-630
Origin:	Human
Source:	HEK-293 Cells
Protein Type:	Recombinant
Purification tag / Conjugate:	This LRP6 protein is labelled with mFc Tag.

Product Details

Purpose:	Human LRP-6 Protein
Sequence:	Ala20-Pro630
Characteristics:	Recombinant Human LRP-6 Protein is expressed from HEK293 with mFc (IgG1) tag at the C-Terminus. It contains Ala20-Pro630.
Purity:	> 90 % as determined by Tris-Bis PAGE
Sterility:	0.22 µm filtered
Endotoxin Level:	Less than 1EU per µg by the LAL method.
Biological Activity Comment:	Immobilized Human DKK1, His Tag at 5µg/ml (100µl/Well) on the plate. Dose response curve for Human LRP-6, mFc Tag with the EC50 of 2.1µg/ml determined by ELISA. See testing image for detail.

Target Details

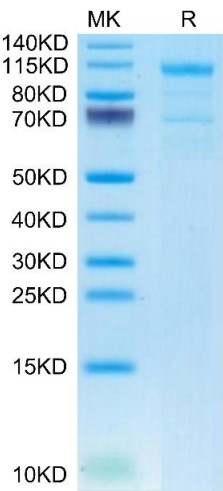
Target:	LRP6
Alternative Name:	LRP-6 (LRP6 Products)
Background:	Dickkopf-related protein 1 (DKK-1), a ligand for the WNT coreceptors low-density lipoprotein receptor-related proteins 5 and 6 (LRP-5 and LRP-6) and an inhibitor of WNT/ β -catenin signaling, effectively inhibits pericyte activation, detachment, and transition to myofibroblasts in vivo in response to kidney injury, resulting in attenuated fibrogenesis, capillary rarefaction, and inflammation. LRP-6 interacts closely with PDGF receptor β and TGF- β receptor 1 at the cell membrane, suggesting that it may have roles in pathways other than WNT/ β -catenin.
Molecular Weight:	95.3 kDa. Due to glycosylation, the protein migrates to 110-115 kDa based on Tris-Bis PAGE result.
Pathways:	WNT Signaling , Tube Formation

Application Details

Restrictions:	For Research Use only
---------------	-----------------------

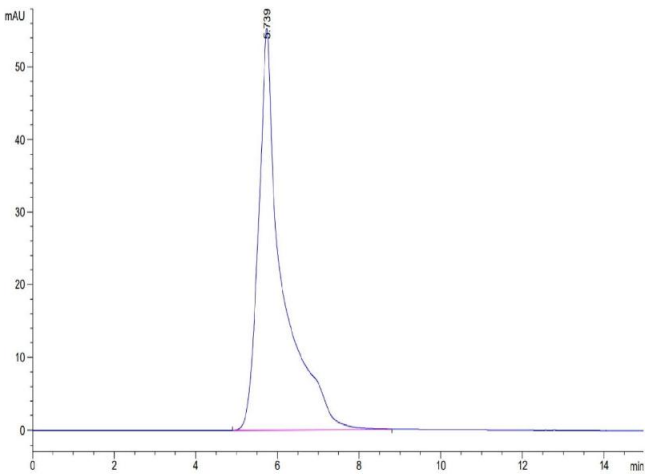
Handling

Format:	Lyophilized
Reconstitution:	Centrifuge the tube before opening. Reconstituting to a concentration more than 100 μ g/mL is recommended. Dissolve the lyophilized protein in distilled water.
Buffer:	Lyophilized from 0.22 μ m filtered solution in PBS (pH 7.4). Normally 8 % trehalose is added as protectant before lyophilization.
Storage:	-20 $^{\circ}$ C,-80 $^{\circ}$ C
Storage Comment:	-20 to -80 $^{\circ}$ C for 12 months as supplied from date of receipt., -80 $^{\circ}$ C for 3-6 months after reconstitution., 2-8 $^{\circ}$ C for 2-7 days after reconstitution., Recommend to aliquot the protein into smaller quantities for optimal storage. Please minimize freeze-thaw cycles.
Expiry Date:	12 months



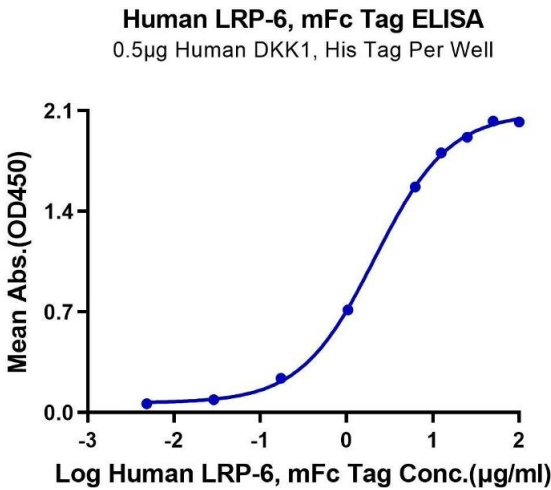
SDS-PAGE

Image 1. Human LRP-6 on Tris-Bis PAGE under reduced condition. The purity is greater than 95 % .



Size-exclusion chromatography-High Pressure Liquid Chromatography

Image 2. The purity of Human LRP-6 is greater than 95 % as determined by SEC-HPLC.



ELISA

Image 3. Immobilized Human DKK1, His Tag at 5 µg/mL (100 µL/Well) on the plate. Dose response curve for Human LRP-6, mFc Tag with the EC50 of 2.1 µg/mL determined by ELISA.