

Datasheet for ABIN7275212
LRRC15 Protein (AA 22-538) (His tag)



[Go to Product page](#)

2 Images

Overview

Quantity:	100 µg
Target:	LRRC15
Protein Characteristics:	AA 22-538
Origin:	Cynomolgus, Rhesus Monkey
Source:	HEK-293 Cells
Protein Type:	Recombinant
Purification tag / Conjugate:	This LRRC15 protein is labelled with His tag.

Product Details

Purpose:	Cynomolgus/Rhesus macaque LRRC15/LIB Protein
Sequence:	Tyr22-Gly538
Characteristics:	Recombinant Cynomolgus/Rhesus macaque LRRC15/LIB Protein is expressed from HEK293 with His tag at the C-Terminus.It contains Tyr22-Gly538.
Purity:	> 95 % as determined by Tris-Bis PAGE
Sterility:	0.22 µm filtered
Endotoxin Level:	Less than 1EU per µg by the LAL method.
Biological Activity Comment:	Immobilized Cynomolgus LRRC15, His Tag at 5µg/ml (100µl/Well) on the plate. Dose response curve for Anti-LRRC15 Antibody, hFc Tag with the EC50 of 41.0ng/ml determined by ELISA. See testing image for detail.

Target Details

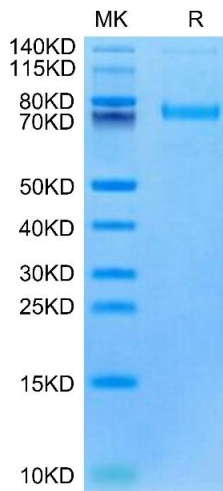
Target:	LRRC15
Alternative Name:	LRRC15 (LRRC15 Products)
Background:	The chimeric protein binds in vitro and in vivo to a specific element upstream of LRRC15, leading to dramatic transcriptional activation. LRRC15 encodes a leucine-rich transmembrane protein, present at the leading edge of migrating cells, the expression of which in normal tissues is restricted to the invasive cytotrophoblast layer of the placenta, small interfering (siRNA)-mediated suppression of LRRC15 expression in breast cancer cells leads to abrogation of invasiveness in vitro.
Molecular Weight:	58.92 kDa. Due to glycosylation, the protein migrates to 70-80 kDa based on Tris-Bis PAGE result.
UniProt:	A0A2K5UKB6 , F7FSB9

Application Details

Restrictions:	For Research Use only
---------------	-----------------------

Handling

Format:	Lyophilized
Reconstitution:	Centrifuge the tube before opening. Reconstituting to a concentration more than 100 µg/mL is recommended. Dissolve the lyophilized protein in distilled water.
Buffer:	Lyophilized from 0.22µm filtered solution in PBS (pH 7.4). Normally 8 % trehalose is added as protectant before lyophilization.
Storage:	-20 °C,-80 °C
Storage Comment:	-20 to -80°C for 12 months as supplied from date of receipt.,-80°C for 3-6 months after reconstitution.,2-8°C for 2-7 days after reconstitution.,Recommend to aliquot the protein into smaller quantities for optimal storage. Please minimize freeze-thaw cycles.
Expiry Date:	12 months

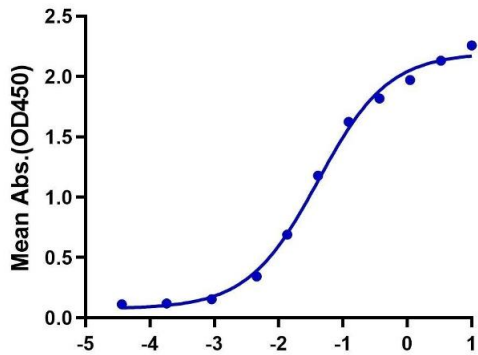


SDS-PAGE

Image 1. Cynomolgus LRRC15 on Tris-Bis PAGE under reduced condition. The purity is greater than 95 % .

Cynomolgus LRRC15, His Tag ELISA

0.5µg Cynomolgus LRRC15, His Tag Per Well



Log Anti-LRRC15 Antibody, hFc Tag Conc.(µg/ml)

ELISA

Image 2. Immobilized Cynomolgus LRRC15, His Tag at 5 µg/mL (100 µL/Well) on the plate. Dose response curve for Anti-LRRC15 Antibody, hFc Tag with the EC50 of 41.0 ng/mL determined by ELISA.