



[Go to Product page](#)

Datasheet for ABIN7275215
LRRC15 Protein (His-Avi Tag)

5 Images

Overview

Quantity:	100 µg
Target:	LRRC15
Origin:	Human
Source:	HEK-293 Cells
Protein Type:	Recombinant
Purification tag / Conjugate:	This LRRC15 protein is labelled with His-Avi Tag.

Product Details

Sequence:	Tyr22-Gly538
Purity:	> 95% as determined by Tris-Bis PAGE,> 95% as determined by HPLC
Sterility:	0.22 µm filtered
Endotoxin Level:	Less than 1EU per µg by the LAL method.
Biological Activity Comment:	Immobilized Human LRRC15, His Tag at 2µg/ml (100µl/Well) on the plate. Dose response curve for Anti-LRRC15 Antibody, hFc Tag with the EC ₅₀ of 20.4ng/ml determined by ELISA. See testing image for detail.

Target Details

Target:	LRRC15
Alternative Name:	LRRC15 (LRRC15 Products)
Background:	LIB, LRRC15,The chimeric protein binds in vitro and in vivo to a specific element upstream of LRRC15, leading to dramatic transcriptional activation. LRRC15 encodes a leucine-rich

Target Details

transmembrane protein, present at the leading edge of migrating cells, the expression of which in normal tissues is restricted to the invasive cytotrophoblast layer of the placenta, small interfering (siRNA)-mediated suppression of LRRC15 expression in breast cancer cells leads to abrogation of invasiveness in vitro.

Molecular Weight: 60.7 kDa. Due to glycosylation, the protein migrates to 70-80 kDa based on Tris-Bis PAGE result.

Application Details

Restrictions: For Research Use only

Handling

Format: Lyophilized

Reconstitution: Centrifuge tubes before opening. Reconstituting to a concentration more than 100 µg/mL is recommended (usually we use 1 mg/mL solution for lyophilization). Dissolve the lyophilized protein in distilled water.

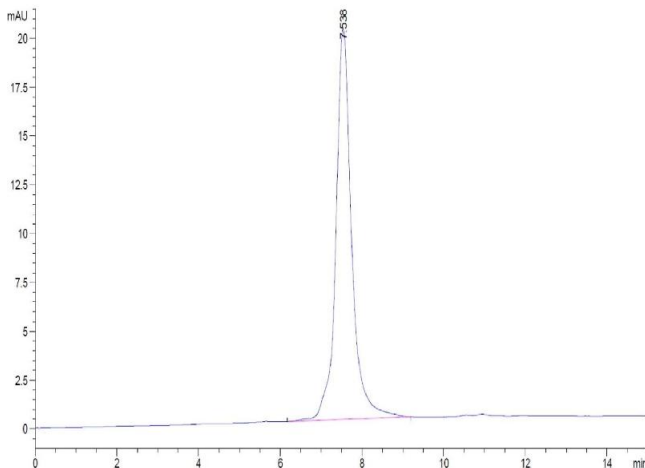
Buffer: Lyophilized from 0.22µm filtered solution in PBS (pH 7.4). Normally 5 % trehalose is added as protectant before lyophilization.

Storage: 4 °C,-80 °C

Storage Comment: Reconstituted protein stable at -80°C for 12 months, 4°C for 1 week. Use a manual defrost freezer and avoid repeated freeze-thaw cycles.

Expiry Date: 12 months

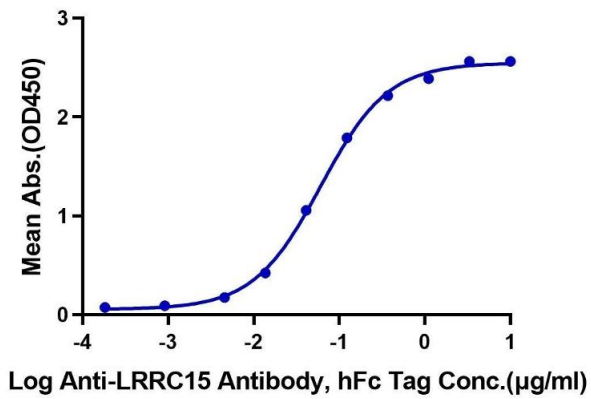
Images



Size-exclusion chromatography-High Pressure Liquid Chromatography

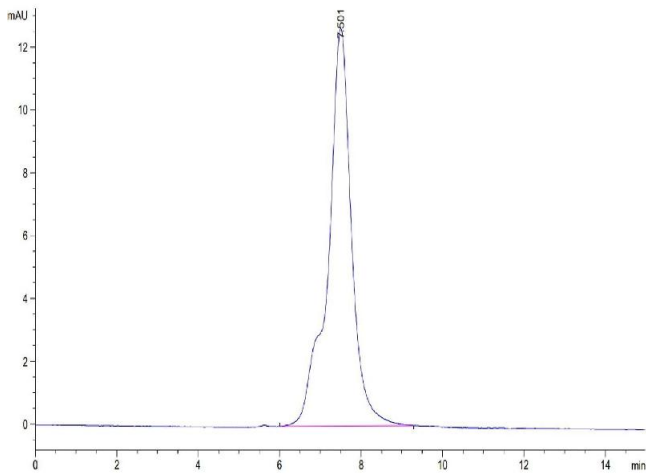
Image 1. The purity of Human LRRC15 is greater than 95 % as determined by SEC-HPLC.

Human LRRC15, His Tag ELISA
0.2µg Human LRRC15, His Tag Per Well



ELISA

Image 2. Immobilized Human LRRC15, His Tag at 2 µg/mL (100 µL/Well) on the plate. Dose response curve for Anti-LRRC15 Antibody, hFc Tag with the EC50 of 60.9 ng/mL determined by ELISA.



Size-exclusion chromatography-High Pressure Liquid Chromatography

Image 3. The purity of Human LRRC15 is greater than 95 % as determined by SEC-HPLC.

Please check the [product details page](#) for more images. Overall 5 images are available for ABIN7275215.