



Datasheet for ABIN7275216

LRRC15 Protein (AA 22-538) (His-Avi Tag,Biotin)



[Go to Product page](#)

4 Images

Overview

Quantity:	100 µg
Target:	LRRC15
Protein Characteristics:	AA 22-538
Origin:	Human
Source:	CHO Cells
Protein Type:	Recombinant
Purification tag / Conjugate:	This LRRC15 protein is labelled with His-Avi Tag,Biotin.

Product Details

Purpose:	Biotinylated Human LRRC15/LIB Protein
Sequence:	Tyr22-Gly538
Characteristics:	Recombinant Biotinylated Human LRRC15/LIB Protein is expressed from CHO with His tag and Avi tag at the C-Terminus.It contains Tyr22-Gly538.
Purity:	> 95 % as determined by Tris-Bis PAGE,> 95 % as determined by HPLC
Sterility:	0.22 µm filtered
Endotoxin Level:	Less than 1EU per µg by the LAL method.
Biological Activity Comment:	Immobilized Anti-LRRC15 Antibody, hFc Tag at 1µg/ml (100µl/well) on the plate. Dose response curve for Biotinylated Human LRRC15, His Tag with the EC50 of 38.3ng/ml determined by ELISA. See testing image for detail.

Target Details

Target:	LRRC15
Alternative Name:	LRRC15 (LRRC15 Products)
Background:	The chimeric protein binds in vitro and in vivo to a specific element upstream of LRRC15, leading to dramatic transcriptional activation. LRRC15 encodes a leucine-rich transmembrane protein, present at the leading edge of migrating cells, the expression of which in normal tissues is restricted to the invasive cytotrophoblast layer of the placenta, small interfering (siRNA)-mediated suppression of LRRC15 expression in breast cancer cells leads to abrogation of invasiveness in vitro.
Molecular Weight:	60.7 kDa. Due to glycosylation, the protein migrates to 70-80 kDa based on Tris-Bis PAGE result.

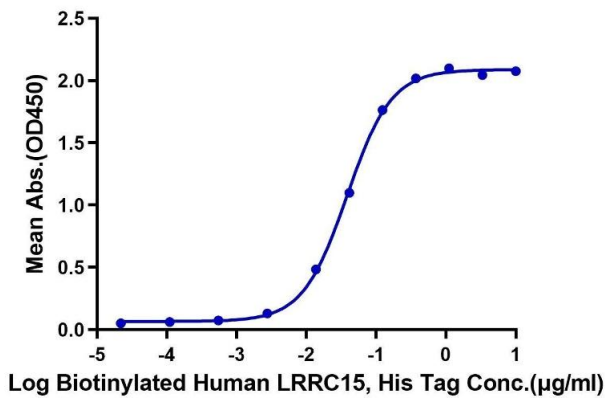
Application Details

Restrictions:	For Research Use only
---------------	-----------------------

Handling

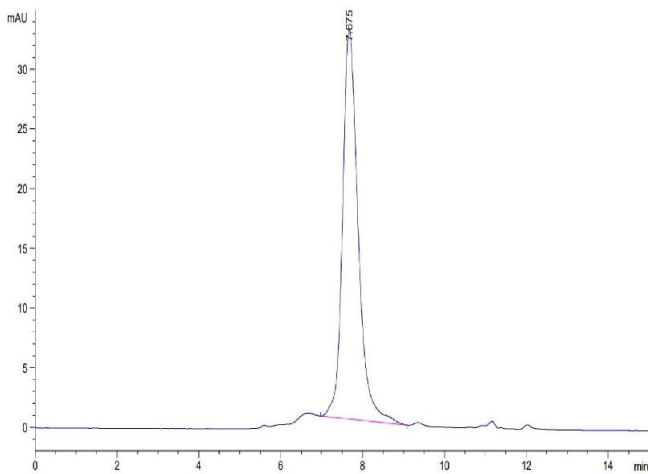
Format:	Lyophilized
Reconstitution:	Centrifuge the tube before opening. Reconstituting to a concentration more than 100 µg/mL is recommended. Dissolve the lyophilized protein in distilled water.
Buffer:	Lyophilized from 0.22µm filtered solution in PBS (pH 7.4). Normally 8 % trehalose is added as protectant before lyophilization.
Storage:	-20 °C,-80 °C
Storage Comment:	-20 to -80°C for 12 months as supplied from date of receipt.,-80°C for 3-6 months after reconstitution.,2-8°C for 2-7 days after reconstitution.,Recommend to aliquot the protein into smaller quantities for optimal storage. Please minimize freeze-thaw cycles.
Expiry Date:	12 months

Biotinylated Human LRRC15, His Tag ELISA
0.1µg Anti-LRRC15 Antibody, hFc Tag Per Well



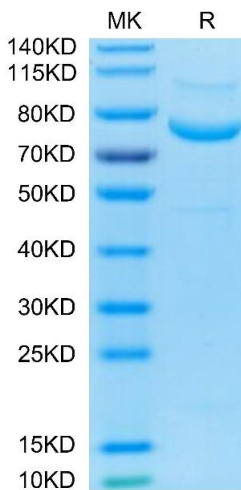
ELISA

Image 1. Immobilized Anti-LRRC15 Antibody, hFc Tag at 1 µg/mL (100 µL/well) on the plate. Dose response curve for Biotinylated Human LRRC15, His Tag with the EC50 of 38.3 ng/mL determined by ELISA.



Size-exclusion chromatography-High Pressure Liquid Chromatography

Image 2. The purity of Biotinylated Human LRRC15 is greater than 95 % as determined by SEC-HPLC.



SDS-PAGE

Image 3. Biotinylated Human LRRC15 on Tris-Bis PAGE under reduced condition. The purity is greater than 95 %.

Please check the [product details page](#) for more images. Overall 4 images are available for ABIN7275216.