



[Go to Product page](#)

Datasheet for ABIN7275217

LRRC15 Protein (AA 22-536) (His tag)

2 Images

Overview

Quantity:	100 µg
Target:	LRRC15
Protein Characteristics:	AA 22-536
Origin:	Mouse
Source:	HEK-293 Cells
Protein Type:	Recombinant
Purification tag / Conjugate:	This LRRC15 protein is labelled with His tag.

Product Details

Purpose:	Mouse LRRC15/LIB Protein
Sequence:	Tyr22-Gly536
Characteristics:	Recombinant Mouse LRRC15/LIB Protein is expressed from HEK293 with His tag at the C-Terminus. It contains Tyr22-Gly536.
Purity:	> 95 % as determined by Tris-Bis PAGE, > 95 % as determined by HPLC
Sterility:	0.22 µm filtered
Endotoxin Level:	Less than 1EU per µg by the LAL method.

Target Details

Target:	LRRC15
Alternative Name:	LRRC15 (LRRC15 Products)

Target Details

Background: The chimeric protein binds in vitro and in vivo to a specific element upstream of LRRC15, leading to dramatic transcriptional activation. LRRC15 encodes a leucine-rich transmembrane protein, present at the leading edge of migrating cells, the expression of which in normal tissues is restricted to the invasive cytotrophoblast layer of the placenta, small interfering (siRNA)-mediated suppression of LRRC15 expression in breast cancer cells leads to abrogation of invasiveness in vitro.

Molecular Weight: 58.56 kDa. Due to glycosylation, the protein migrates to 70-80 kDa based on Tris-Bis PAGE result.

UniProt: [Q80X72](#)

Application Details

Restrictions: For Research Use only

Handling

Format: Lyophilized

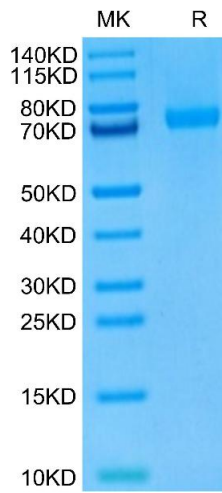
Reconstitution: Centrifuge the tube before opening. Reconstituting to a concentration more than 100 µg/mL is recommended. Dissolve the lyophilized protein in distilled water.

Buffer: Lyophilized from 0.22µm filtered solution in PBS (pH 7.4). Normally 8 % trehalose is added as protectant before lyophilization.

Storage: -20 °C,-80 °C

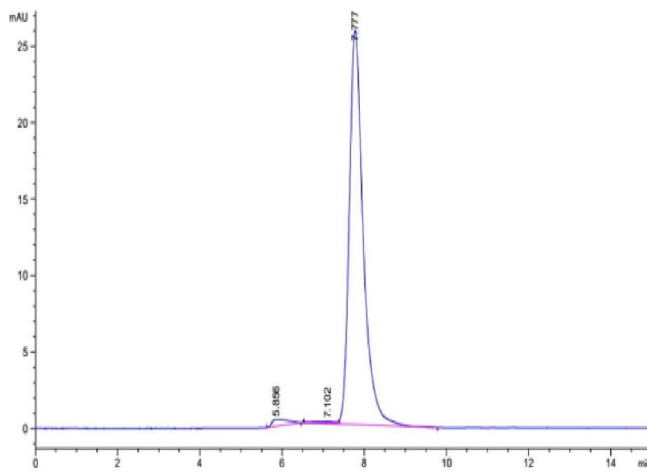
Storage Comment: -20 to -80°C for 12 months as supplied from date of receipt.,-80°C for 3-6 months after reconstitution.,2-8°C for 2-7 days after reconstitution.,Recommend to aliquot the protein into smaller quantities for optimal storage. Please minimize freeze-thaw cycles.

Expiry Date: 12 months



SDS-PAGE

Image 1. Mouse LRRC15 on Tris-Bis PAGE under reduced condition. The purity is greater than 95 % .



Size-exclusion chromatography-High Pressure Liquid Chromatography

Image 2. The purity of Mouse LRRC15 is greater than 95 % as determined by SEC-HPLC.