

Datasheet for ABIN7275245

MEPE Protein (AA 25-441) (His tag)[Go to Product page](#)**1** Image

Overview

Quantity:	100 µg
Target:	MEPE
Protein Characteristics:	AA 25-441
Origin:	Mouse
Source:	HEK-293 Cells
Protein Type:	Recombinant
Purification tag / Conjugate:	This MEPE protein is labelled with His tag.

Product Details

Purpose:	Mouse MEPE Protein
Sequence:	Ala25-Asp441
Characteristics:	Recombinant Mouse MEPE Protein is expressed from HEK293 with His tag at the C-Terminus. It contains Ala25-Asp441.
Purity:	> 95 % as determined by Tris-Bis PAGE
Sterility:	0.22 µm filtered
Endotoxin Level:	Less than 1EU per µg by the LAL method.

Target Details

Target:	MEPE
Alternative Name:	MEPE (MEPE Products)

Target Details

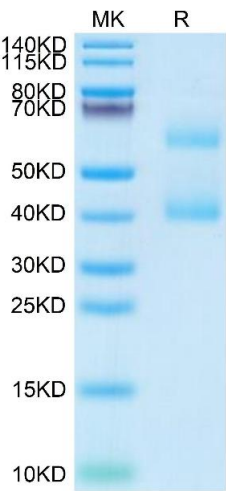
Background:	Matrix extracellular phosphoglycoprotein (MEPE) is expressed in bone and teeth where it has multiple functions. The C-terminus of MEPE contains a mineral-binding, acidic serine- and aspartate-rich motif (ASARM) that is also present in other noncollagenous proteins of mineralized tissues. MEPE-derived ASARM peptides function in phosphate homeostasis and direct inhibition of bone mineralization in a phosphorylation-dependent manner.
Molecular Weight:	45.3 kDa. The protein is cleaved into 2 chains and due to glycosylation, it migrates to 45-60 kDa based on Tris-Bis PAGE result.
UniProt:	Q8K4L6

Application Details

Restrictions:	For Research Use only
---------------	-----------------------

Handling

Format:	Lyophilized
Reconstitution:	Centrifuge the tube before opening. Reconstituting to a concentration more than 100 µg/mL is recommended. Dissolve the lyophilized protein in distilled water.
Buffer:	Lyophilized from 0.22µm filtered solution in PBS (pH 7.4). Normally 8 % trehalose is added as protectant before lyophilization.
Storage:	-20 °C,-80 °C
Storage Comment:	-20 to -80°C for 12 months as supplied from date of receipt.,-80°C for 3-6 months after reconstitution.,-2-8°C for 2-7 days after reconstitution.,Recommend to aliquot the protein into smaller quantities for optimal storage. Please minimize freeze-thaw cycles.
Expiry Date:	12 months



SDS-PAGE

Image 1. Mouse MEPE on Tris-Bis PAGE under reduced condition. The purity is greater than 95 % .