

Datasheet for ABIN7275292

**MASP2 Protein (AA 288-686) (His tag)****4** Images[Go to Product page](#)

## Overview

Quantity:	100 µg
Target:	MASP2
Protein Characteristics:	AA 288-686
Origin:	Human
Source:	Escherichia coli (E. coli)
Protein Type:	Recombinant
Purification tag / Conjugate:	This MASP2 protein is labelled with His tag.

## Product Details

Purpose:	Human MASP2 Protein
Sequence:	Gly288-Phe686
Characteristics:	Recombinant Human MASP2 Protein is expressed from E.coli with His tag at the C-Terminus.It contains Gly288-Phe686.
Purity:	> 95 % as determined by Tris-Bis PAGE
Sterility:	0.22 µm filtered
Endotoxin Level:	Less than 1EU per µg by the LAL method.
Biological Activity Comment:	Immobilized Human MASP2, His Tag at 0.2µg/ml (100µl/Well). Dose response curve for Anti-MASP2 Antibody, hFc Tag with the EC50 of 3.0ng/ml determined by ELISA. The affinity constant of 3.08 nM as determined in SPR assay (Biacore T200). See testing image for detail.

## Target Details

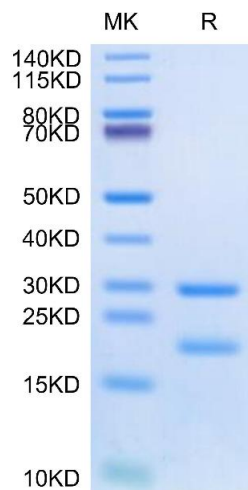
Target:	MASP2
Alternative Name:	MASP2 ( <a href="#">MASP2 Products</a> )
Background:	The pathogenesis of severe acute respiratory disease syndrome (SARS) is not fully understood. One case-control study has reported an association between susceptibility to SARS and mannan-binding lectin (MBL) in China. As the downstream protein of MBL, variants of the MBL-associated serine protease-2 (MASP2) gene may be associated with SARS coronavirus (SARS-CoV) infection in the same population.
Molecular Weight:	46.9 kDa. Due to autocatalytic cleavage, the protein migrates to 18 kDa&25-30 kDa based on Tris-Bis PAGE result.
Pathways:	<a href="#">Complement System</a>

## Application Details

Restrictions:	For Research Use only
---------------	-----------------------

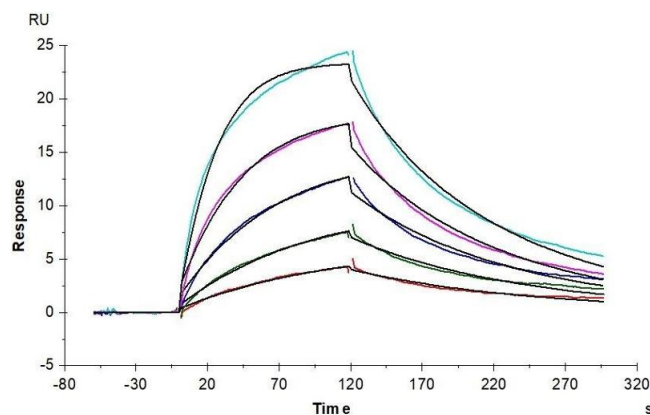
## Handling

Format:	Lyophilized
Reconstitution:	Centrifuge the tube before opening. Reconstituting to a concentration more than 100 µg/mL is recommended. Dissolve the lyophilized protein in distilled water.
Buffer:	Lyophilized from 0.22µm filtered solution in 20 mM Tris, 200 mM NaCl ( pH 9.0). Normally 8 % trehalose is added as protectant before lyophilization.
Storage:	-20 °C,-80 °C
Storage Comment:	-20 to -80°C for 12 months as supplied from date of receipt.,-80°C for 3-6 months after reconstitution.,-2-8°C for 2-7 days after reconstitution.,Recommend to aliquot the protein into smaller quantities for optimal storage. Please minimize freeze-thaw cycles.
Expiry Date:	12 months



### SDS-PAGE

**Image 1.** Human MASP2 on Tris-Bis PAGE under reduced condition. The purity is greater than 95 % .

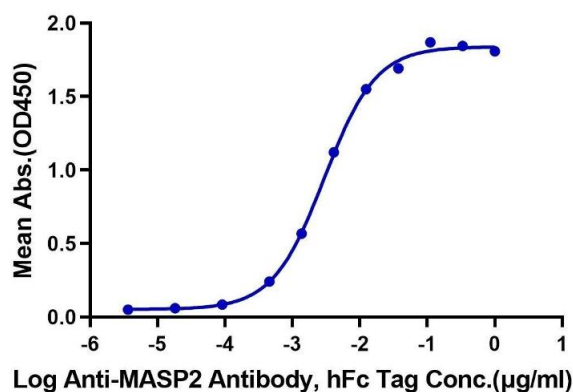


### Surface Plasmon Resonance

**Image 2.** Anti-MASP2 Antibody captured on CM5 Chip via Protein A can bind Human MASP2, His Tag with an affinity constant of 3.08 nM as determined in SPR assay (Biacore T200).

### Human MASP2, His Tag ELISA

0.02 $\mu$ g Human MASP2, His Tag Per Well



### ELISA

**Image 3.** Immobilized Human MASP2, His Tag at 0.2  $\mu$ g/mL (100  $\mu$ L/Well). Dose response curve for Anti-MASP2 Antibody, hFc Tag with the EC<sub>50</sub> of 3.0 ng/mL determined by ELISA.

Please check the [product details page](#) for more images. Overall 4 images are available for ABIN7275292.