

Datasheet for ABIN7275352  
**NCR1 Protein (mFc Tag)**[Go to Product page](#)

## 4 Images

## Overview

Quantity:	100 µg
Target:	NCR1
Origin:	Human
Source:	HEK-293 Cells
Protein Type:	Recombinant
Purification tag / Conjugate:	This NCR1 protein is labelled with mFc Tag.

## Product Details

Sequence:	Gln22-Asn255
Purity:	> 95% as determined by Tris-Bis PAGE, > 95% as determined by HPLC
Sterility:	0.22 µm filtered
Endotoxin Level:	Less than 1EU per µg by the LAL method.
Biological Activity Comment:	Immobilized Human NKp46, mFc Tag at 0.5µg/ml (100µl/well) on the plate. Dose response curve for Anti-Nkp46 Antibody, hFc Tag with the EC50 of 18.7ng/ml determined by ELISA. See testing image for detail.

## Target Details

Target:	NCR1
Alternative Name:	NKp46 ( <a href="#">NCR1 Products</a> )
Background:	CD335, Ly94, NCR1, NKp46, MAR-1, NKP46FLJ99094, NKp46, along with NKp30 and NKp44, are activating receptors that have been collectively termed the natural cytotoxicity receptors

### Target Details

	(NCR). These receptors lack significant sequence homology to one another. They are expressed almost exclusively by NK cells and play a major role in triggering some of the key lytic activities of NK cells.
Molecular Weight:	52.9 kDa. Due to glycosylation, the protein migrates to 65-75 kDa based on Tris-Bis PAGE result.
Pathways:	<a href="#">Regulation of Leukocyte Mediated Immunity</a>

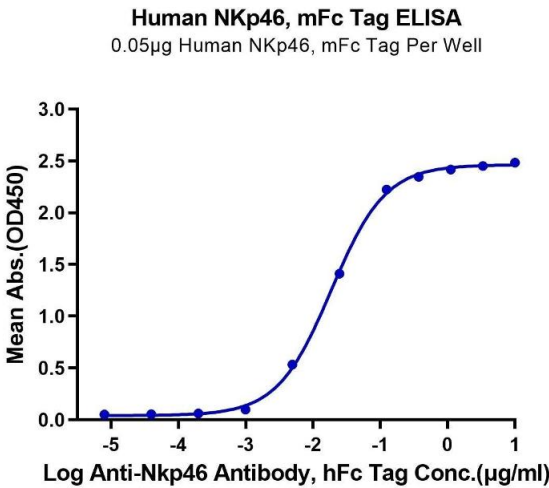
### Application Details

Restrictions:	For Research Use only
---------------	-----------------------

### Handling

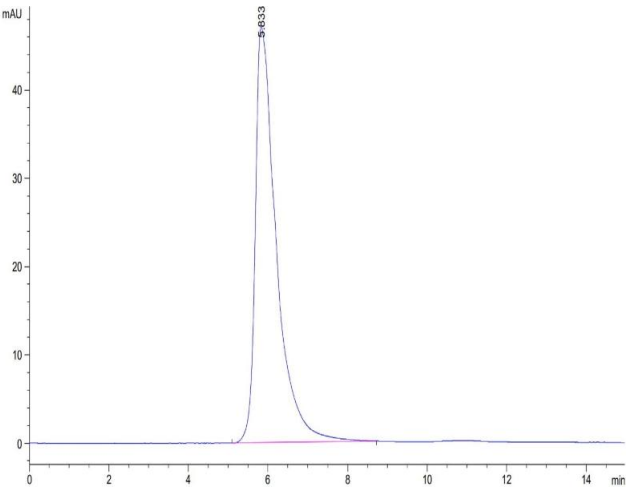
Format:	Lyophilized
Reconstitution:	Centrifuge tubes before opening. Reconstituting to a concentration more than 100 µg/mL is recommended (usually we use 1 mg/mL solution for lyophilization). Dissolve the lyophilized protein in distilled water.
Buffer:	Lyophilized from 0.22µm filtered solution in PBS ( pH 7.4). Normally 8 % trehalose is added as protectant before lyophilization.
Storage:	4 °C, -80 °C
Storage Comment:	Reconstituted protein stable at -80°C for 12 months, 4°C for 1 week. Use a manual defrost freezer and avoid repeated freeze-thaw cycles.
Expiry Date:	12 months

### Images



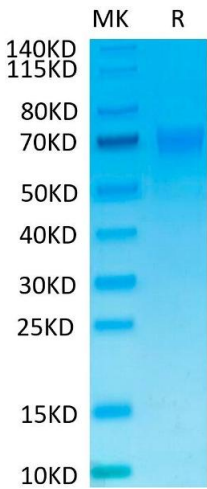
#### ELISA

**Image 1.** Immobilized Human NKp46, mFc Tag at 0.5 µg/mL (100 µL/well) on the plate. Dose response curve for Anti-Nkp46 Antibody, hFc Tag with the EC50 of 18.7 ng/mL determined by ELISA.



Size-exclusion chromatography-High Pressure Liquid Chromatography

**Image 2.** The purity of Human NKp46 is greater than 95 % as determined by SEC-HPLC.



SDS-PAGE

**Image 3.** Human NKp46 on Tris-Bis PAGE under reduced condition. The purity is greater than 95 % .

Please check the [product details page](#) for more images. Overall 4 images are available for ABIN7275352.