

Datasheet for ABIN7275361

NOTCH3 Protein (AA 1378-1640) (His tag)[Go to Product page](#)**3** Images

Overview

Quantity:	100 µg
Target:	NOTCH3
Protein Characteristics:	AA 1378-1640
Origin:	Human
Source:	HEK-293 Cells
Protein Type:	Recombinant
Purification tag / Conjugate:	This NOTCH3 protein is labelled with His tag.

Product Details

Purpose:	Human Notch 3 Protein
Sequence:	Ala1378-Ser1640
Characteristics:	Recombinant Human Notch 3 Protein is expressed from HEK293 with His tag at the C-Terminus. It contains Ala1378-Ser1640.
Purity:	> 95 % as determined by Tris-Bis PAGE, > 95 % as determined by HPLC
Sterility:	0.22 µm filtered
Endotoxin Level:	Less than 1EU per µg by the LAL method.
Biological Activity Comment:	Immobilized Human Notch 3, His Tag at 2µg/ml (100µl/Well) on the plate. Dose response curve for Anti-Notch 3 Antibody, hFc Tag with the EC50 of 8.2ng/ml determined by ELISA. See testing image for detail.

Target Details

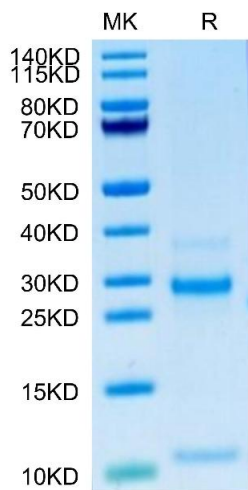
Target:	NOTCH3
Alternative Name:	Notch 3 (NOTCH3 Products)
Background:	Human Notch-3 is part of the Notch family of type I transmembrane glycoproteins involved in a number of early-event developmental processes. The extracellular domain of Notch receptors interact with the extracellular domain of transmembrane ligands Jagged, Delta, and Serrate expressed on the surface of a neighboring cell. Upon ligand activation through the released notch intracellular domain (NICD) it forms a transcriptional activator complex with RBPJ/RBPSUH and activates genes of the enhancer of split locus. Affects the implementation of differentiation, proliferation and apoptotic programs.
Molecular Weight:	30.18 kDa. Due to furin-like protease cleavage and glycosylation, the protein migrates to 27-30 kDa and 10-12 kDa based on Tris-Bis PAGE result.
UniProt:	Q9UM47
Pathways:	Notch Signaling

Application Details

Restrictions:	For Research Use only
---------------	-----------------------

Handling

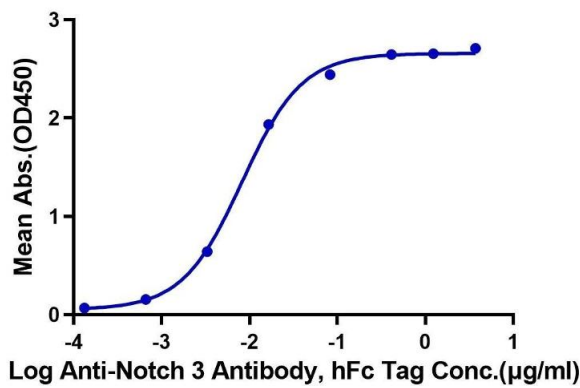
Format:	Lyophilized
Reconstitution:	Centrifuge the tube before opening. Reconstituting to a concentration more than 100 µg/mL is recommended. Dissolve the lyophilized protein in distilled water.
Buffer:	Lyophilized from 0.22µm filtered solution in PBS (pH 7.4). Normally 8 % trehalose is added as protectant before lyophilization.
Storage:	-20 °C,-80 °C
Storage Comment:	-20 to -80°C for 12 months as supplied from date of receipt.,-80°C for 3-6 months after reconstitution.,2-8°C for 2-7 days after reconstitution.,Recommend to aliquot the protein into smaller quantities for optimal storage. Please minimize freeze-thaw cycles.
Expiry Date:	12 months



SDS-PAGE

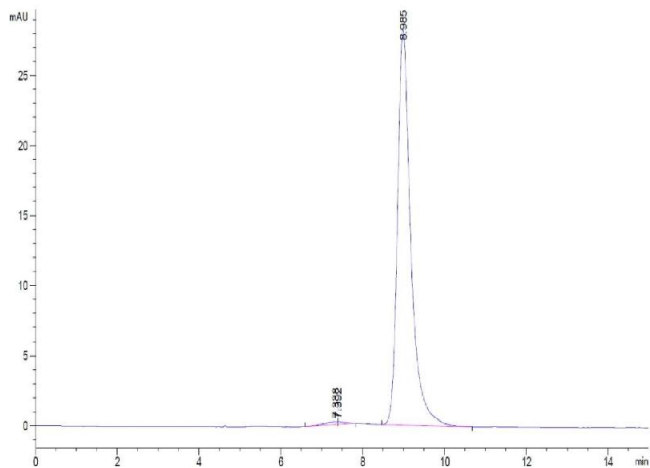
Image 1. Human Notch 3 on Tris-Bis PAGE under reduced condition. The purity is greater than 95 % .

Human Notch 3, His Tag ELISA
0.2µg Human Notch 3, His Tag Per Well



ELISA

Image 2. Immobilized Human Notch 3, His Tag at 2 µg/mL (100 µL/Well) on the plate. Dose response curve for Anti-Notch 3 Antibody, hFc Tag with the EC50 of 8.2 ng/mL determined by ELISA.



Size-exclusion chromatography-High Pressure Liquid Chromatography

Image 3. The purity of Human Notch 3 is greater than 95 % as determined by SEC-HPLC.