

Datasheet for ABIN7275420

**PD-1 Protein (AA 25-167) (mFc Tag)**

5 Images

[Go to Product page](#)

## Overview

Quantity:	100 µg
Target:	PD-1 (PDCD1)
Protein Characteristics:	AA 25-167
Origin:	Human
Source:	HEK-293 Cells
Protein Type:	Recombinant
Purification tag / Conjugate:	This PD-1 protein is labelled with mFc Tag.

## Product Details

Purpose:	Human PD-1/PDCD1 Protein
Sequence:	Leu25-Gln167
Characteristics:	Recombinant Human PD-1/PDCD1 Protein is expressed from HEK293 with mFc (IgG1) tag at the C-Terminus. It contains Leu25-Gln167.
Purity:	> 95 % as determined by Tris-Bis PAGE, > 95 % as determined by HPLC
Sterility:	0.22 µm filtered
Endotoxin Level:	Less than 1EU per µg by the LAL method.
Biological Activity Comment:	Immobilized Human PD-1, mFc Tag at 0.5µg/ml (100µl/Well). Dose response curve for Biotinylated Anti-PD-1 Ab., hFc Tag with the EC50 of 68ng/ml determined by ELISA. See testing image for detail.

## Target Details

Target:	PD-1 (PDCD1)
Alternative Name:	PD-1 ( <a href="#">PDCD1 Products</a> )
Background:	Programmed Death-1 receptor (PD-1), also known as CD279, is type I transmembrane protein belonging to the CD28 family of immune regulatory receptors. PD1 is a inhibitory receptor on antigen activated T-cells that plays a critical role in induction and maintenance of immune tolerance to self. Delivers inhibitory signals upon binding to ligands CD274/PDCD1L1 and CD273/PDCD1LG2 (PubMed:21276005). Following T-cell receptor (TCR) engagement, PDCD1 associates with CD3-TCR in the immunological synapse and directly inhibits T-cell activation.
Molecular Weight:	41.6 kDa. Due to glycosylation, the protein migrates to 64-68 kDa based on Tris-Bis PAGE result.
Pathways:	<a href="#">Cancer Immune Checkpoints</a>

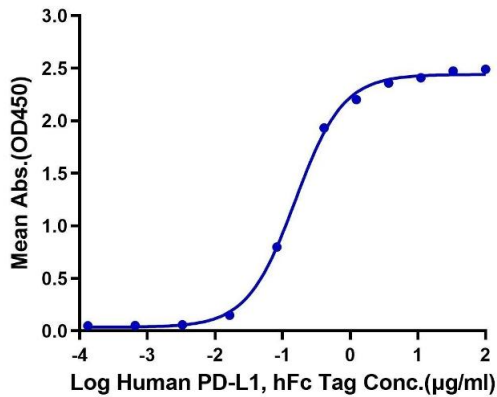
## Application Details

Restrictions:	For Research Use only
---------------	-----------------------

## Handling

Format:	Lyophilized
Reconstitution:	Centrifuge the tube before opening. Reconstituting to a concentration more than 100 µg/mL is recommended. Dissolve the lyophilized protein in distilled water.
Buffer:	Lyophilized from 0.22µm filtered solution in PBS ( pH 7.4). Normally 8 % trehalose is added as protectant before lyophilization.
Storage:	-20 °C,-80 °C
Storage Comment:	-20 to -80°C for 12 months as supplied from date of receipt., -80°C for 3-6 months after reconstitution., 2-8°C for 2-7 days after reconstitution., Recommend to aliquot the protein into smaller quantities for optimal storage. Please minimize freeze-thaw cycles.
Expiry Date:	12 months

**Human PD-1, mFc Tag ELISA**  
0.1µg Human PD-1, mFc Tag Per Well

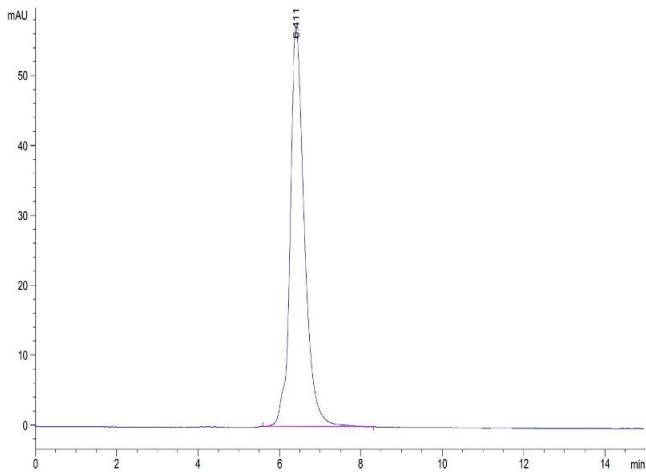


**ELISA**

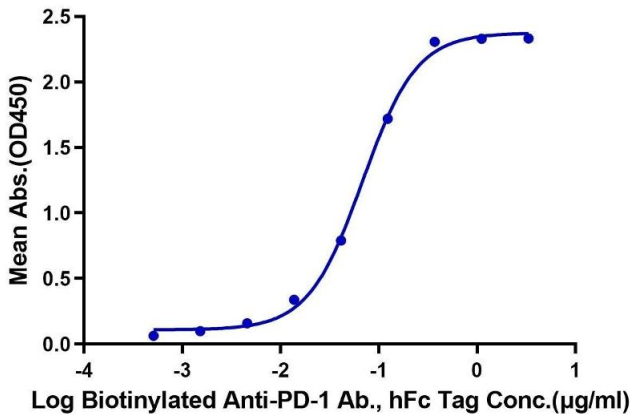
**Image 1.** Immobilized Human PD-1, mFc Tag at 1 µg/mL (100 µL/well) on the plate. Dose response curve for Human PD-L1, hFc Tag with the EC50 of 0.15 µg/mL determined by ELISA.

**Size-exclusion chromatography-High Pressure Liquid Chromatography**

**Image 2.** The purity of Human PD-1 is greater than 95 % as determined by SEC-HPLC.



**Human PD-1, mFc Tag ELISA**  
0.05µg Human PD-1, mFc Tag Per Well



**ELISA**

**Image 3.** Immobilized Human PD-1, mFc Tag at 0.5 µg/mL (100 µL/Well). Dose response curve for Biotinylated Anti-PD-1 Ab., hFc Tag with the EC50 of 68 ng/mL determined by ELISA.

Please check the [product details page](#) for more images. Overall 5 images are available for ABIN7275420.