

Datasheet for ABIN7275422

PD-1 Protein (Fc-Avi Tag,Biotin)**4** Images[Go to Product page](#)

Overview

Quantity:	100 µg
Target:	PD-1 (PDCD1)
Origin:	Human
Source:	HEK-293 Cells
Protein Type:	Recombinant
Purification tag / Conjugate:	This PD-1 protein is labelled with Fc-Avi Tag,Biotin.

Product Details

Sequence:	Leu25-Gln167
Purity:	> 95% as determined by Tris-Bis PAGE,> 95% as determined by HPLC
Sterility:	0.22 µm filtered
Endotoxin Level:	Less than 1EU per µg by the LAL method.
Biological Activity Comment:	Immobilized Human PD-L1, mFc tag at 2µg/ml (100µl/Well). Dose response curve for Biotinylated Human PD-1, hFc tag with the EC50 of 0.19µg/ml determined by ELISA. See testing image for detail.

Target Details

Target:	PD-1 (PDCD1)
Alternative Name:	PD-1 (PDCD1 Products)
Background:	PDCD1, PD1, CD279, SLEB2, PD-1,Programmed cell death protein 1, also known as PD-1 and CD279 , is a protein found on the surface of cells that has a role in regulating the immune

Target Details

	system's response to the cells of the human body by down-regulating the immune system and promoting self tolerance by suppressing T cell inflammatory activity.
Molecular Weight:	44.7 kDa. Due to glycosylation, the protein migrates to 65-72 kDa based on Tris-Bis PAGE result.
Pathways:	Cancer Immune Checkpoints

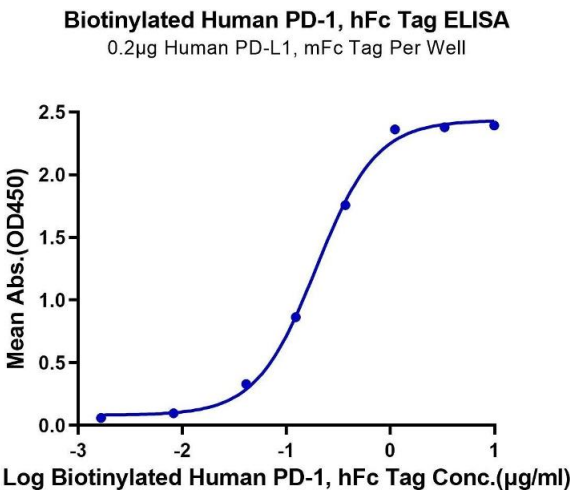
Application Details

Restrictions:	For Research Use only
---------------	-----------------------

Handling

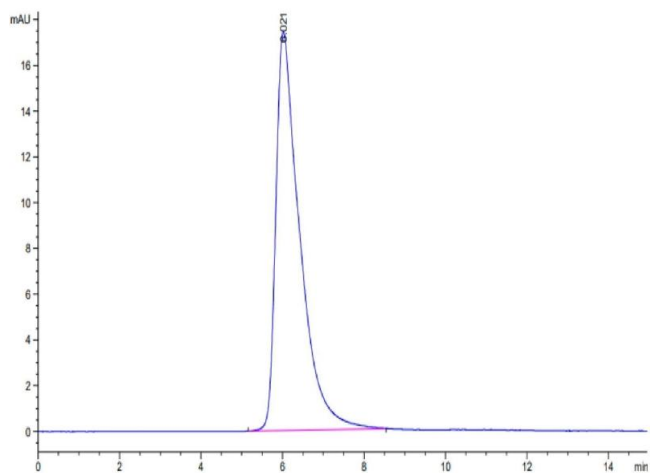
Format:	Lyophilized
Reconstitution:	Centrifuge tubes before opening. Reconstituting to a concentration more than 100 µg/mL is recommended (usually we use 1 mg/mL solution for lyophilization). Dissolve the lyophilized protein in distilled water.
Buffer:	Lyophilized from 0.22µm filtered solution in PBS (pH 7.4). Normally 5 % trehalose is added as protectant before lyophilization.
Storage:	4 °C,-80 °C
Storage Comment:	Reconstituted protein stable at -80°C for 12 months, 4°C for 1 week. Use a manual defrost freezer and avoid repeated freeze-thaw cycles.
Expiry Date:	12 months

Images



ELISA

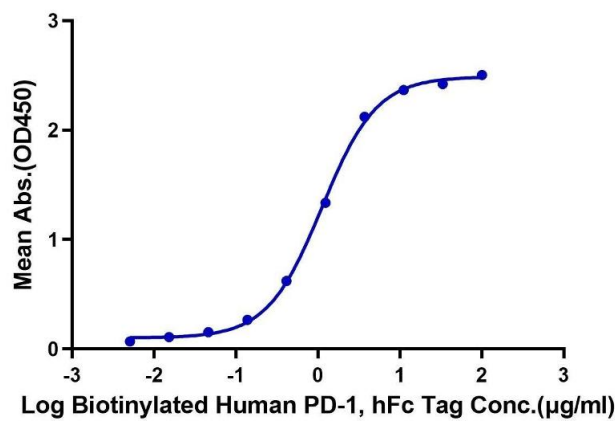
Image 1. Immobilized Human PD-L1, mFc tag at 2 µg/mL (100 µL/Well). Dose response curve for Biotinylated Human PD-1, hFc tag with the EC50 of 0.19 µg/mL determined by ELISA.



Size-exclusion chromatography-High Pressure Liquid Chromatography

Image 2. The purity of Biotinylated Human PD-1 is greater than 95 % as determined by SEC-HPLC.

Biotinylated Human PD-1, hFc Tag ELISA
0.05µg Human PD-L1, mFc Tag Per Well



ELISA

Image 3. Immobilized Human PD-L1, mFc tag at 0.5 µg/mL (100 µL/Well). Dose response curve for Biotinylated Human PD-1, hFc tag with the EC50 of 1.1 µg/mL determined by ELISA.

Please check the [product details page](#) for more images. Overall 4 images are available for ABIN7275422.