

Datasheet for ABIN7275425

PD-L1 Protein (AA 19-238) (His tag)**4** Images[Go to Product page](#)

Overview

Quantity:	100 µg
Target:	PD-L1
Protein Characteristics:	AA 19-238
Origin:	Cynomolgus, Rhesus Monkey
Source:	HEK-293 Cells
Protein Type:	Recombinant
Purification tag / Conjugate:	This PD-L1 protein is labelled with His tag.

Product Details

Purpose:	Cynomolgus/Rhesus macaque PD-L1/B7-H1 Protein
Sequence:	Phe19-Arg238
Characteristics:	Recombinant Cynomolgus/Rhesus macaque PD-L1/B7-H1 Protein is expressed from HEK293 with His tag at the C-Terminus.It contains Phe19-Arg238.
Purity:	> 95 % as determined by Tris-Bis PAGE,> 95 % as determined by HPLC
Sterility:	0.22 µm filtered
Endotoxin Level:	Less than 1EU per µg by the LAL method.
Biological Activity Comment:	Immobilized Cynomolgus PD-L1, His Tag at 0.5µg/ml (100µl/Well) on the plate. Dose response curve for Anti-PD-L1 Antibody, hFc Tag with the EC50 of 4.1ng/ml determined by ELISA. The affinity constant of 1.28 µM as determined in SPR assay (Biacore T200). See testing image for detail.

Target Details

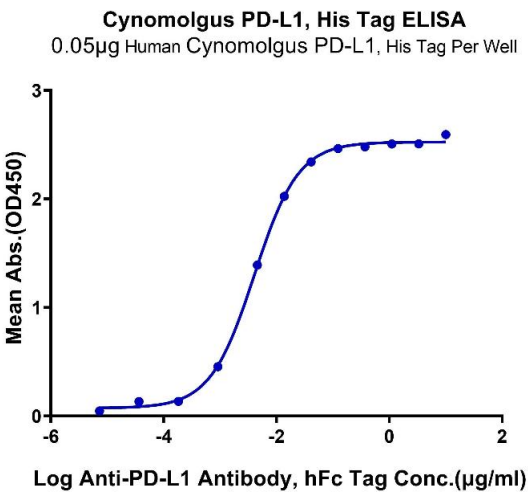
Target:	PD-L1
Alternative Name:	PD-L1 (PD-L1 Products)
Background:	B7-H1, also known as PD-L1 and CD274, is an approximately 65 kDa transmembrane glycoprotein in the B7 family of immune regulatory molecules. PD-L1 has been identified as the ligand for the immunoinhibitory receptor programmed death-1(PD1/PDCD1) and has been demonstrated to play a role in the regulation of immune responses and peripheral tolerance.
Molecular Weight:	26 kDa. Due to glycosylation, the protein migrates to 35-45 kDa based on Tris-Bis PAGE result.
UniProt:	G7PSE7
Pathways:	Cancer Immune Checkpoints

Application Details

Restrictions:	For Research Use only
---------------	-----------------------

Handling

Format:	Lyophilized
Reconstitution:	Centrifuge the tube before opening. Reconstituting to a concentration more than 100 µg/mL is recommended. Dissolve the lyophilized protein in distilled water.
Buffer:	Lyophilized from 0.22µm filtered solution in PBS (pH 7.4). Normally 8 % trehalose is added as protectant before lyophilization.
Storage:	-20 °C,-80 °C
Storage Comment:	-20 to -80°C for 12 months as supplied from date of receipt., -80°C for 3-6 months after reconstitution., 2-8°C for 2-7 days after reconstitution., Recommend to aliquot the protein into smaller quantities for optimal storage. Please minimize freeze-thaw cycles.
Expiry Date:	12 months

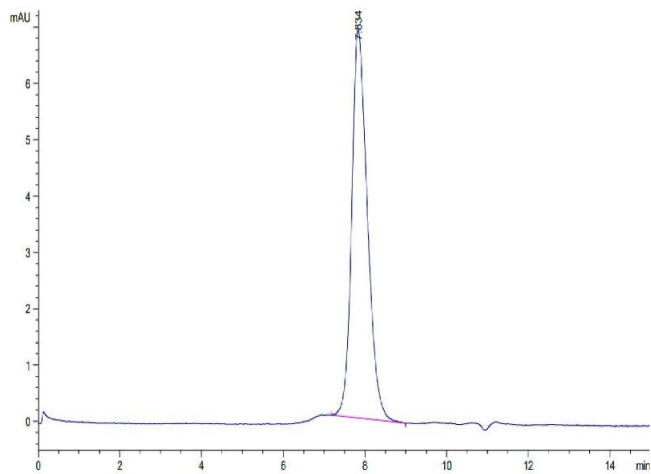


ELISA

Image 1. Immobilized Cynomolgus PD-L1, His Tag at 0.5 µg/mL (100 µL/Well) on the plate. Dose response curve for Anti-PD-L1 Antibody, hFc Tag with the EC₅₀ of 4.1 ng/mL determined by ELISA.

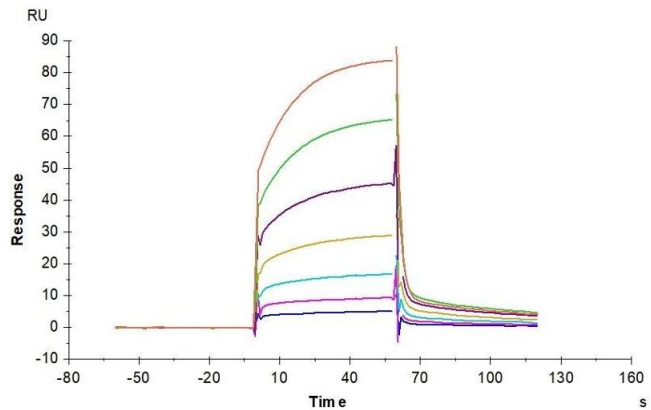
Size-exclusion chromatography-High Pressure Liquid Chromatography

Image 2. The purity of Cynomolgus PD-L1 is greater than 95 % as determined by SEC-HPLC.



Surface Plasmon Resonance

Image 3. Cynomolgus PD-1, hFc Tag captured on CM5 Chip via Protein A can bind Cynomolgus PD-L1, His Tag with an affinity constant of 1.28 µM as determined in SPR assay (Biacore T200).



Please check the [product details page](#) for more images. Overall 4 images are available for ABIN7275425.