

Datasheet for ABIN7275430

PD-L1 Protein (AA 19-238) (Fc Tag)**6** Images[Go to Product page](#)

Overview

Quantity:	100 µg
Target:	PD-L1
Protein Characteristics:	AA 19-238
Origin:	Human
Source:	HEK-293 Cells
Protein Type:	Recombinant
Purification tag / Conjugate:	This PD-L1 protein is labelled with Fc Tag.

Product Details

Purpose:	Human PD-L1/B7-H1 Protein
Sequence:	Phe19-Arg238
Characteristics:	Recombinant Human PD-L1/B7-H1 Protein is expressed from HEK293 with hFc tag at the C-Terminus. It contains Phe19-Arg238.
Purity:	> 95 % as determined by Tris-Bis PAGE, > 95 % as determined by HPLC
Sterility:	0.22 µm filtered
Endotoxin Level:	Less than 1EU per µg by the LAL method.
Biological Activity Comment:	Immobilized Human PD-1, mFc Tag at 1µg/ml (100µl/well) on the plate. Dose response curve for Human PD-L1, hFc Tag with the EC50 of 0.15µg/ml determined by ELISA. The affinity constant of 2.356 µM as determined in SPR assay (Biacore T200). See testing image for detail.

Target Details

Target:	PD-L1
Alternative Name:	PD-L1 (PD-L1 Products)
Background:	B7-H1, also known as PD-L1 and CD274, is an approximately 65 kDa transmembrane glycoprotein in the B7 family of immune regulatory molecules. PD-L1 has been identified as the ligand for the immunoinhibitory receptor programmed death-1(PD1/PDCD1) and has been demonstrated to play a role in the regulation of immune responses and peripheral tolerance.
Molecular Weight:	52 kDa. Due to glycosylation, the protein migrates to 68-80 kDa based on Tris-Bis PAGE result.
Pathways:	Cancer Immune Checkpoints

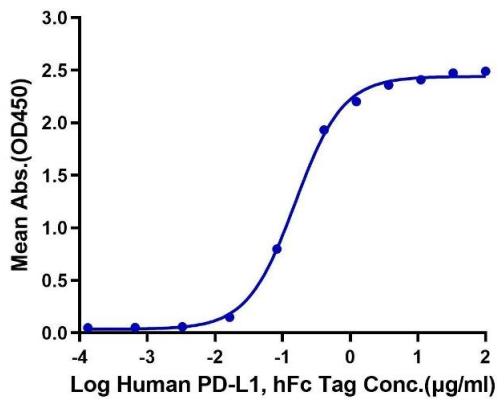
Application Details

Restrictions:	For Research Use only
---------------	-----------------------

Handling

Format:	Lyophilized
Reconstitution:	Centrifuge the tube before opening. Reconstituting to a concentration more than 100 µg/mL is recommended. Dissolve the lyophilized protein in distilled water.
Buffer:	Lyophilized from 0.22µm filtered solution in PBS (pH 7.4). Normally 8 % trehalose is added as protectant before lyophilization.
Storage:	-20 °C,-80 °C
Storage Comment:	-20 to -80°C for 12 months as supplied from date of receipt., -80°C for 3-6 months after reconstitution., 2-8°C for 2-7 days after reconstitution., Recommend to aliquot the protein into smaller quantities for optimal storage. Please minimize freeze-thaw cycles.
Expiry Date:	12 months

Human PD-L1, hFc Tag ELISA
0.1µg Human PD-1, mFc Tag Per Well

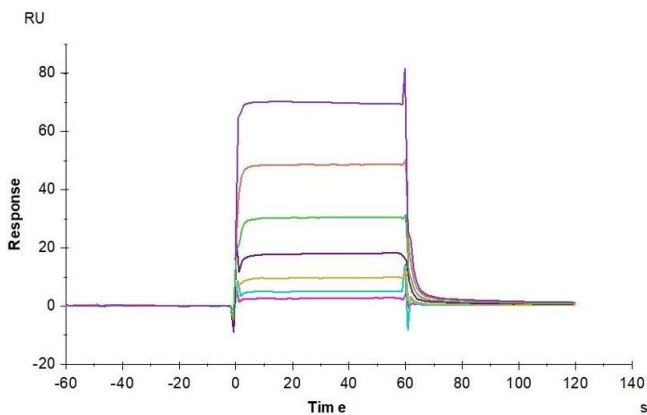


ELISA

Image 1. Immobilized Human PD-1, mFc Tag at 1 µg/mL (100 µL/well) on the plate. Dose response curve for Human PD-L1, hFc Tag with the EC₅₀ of 0.15 µg/mL determined by ELISA.

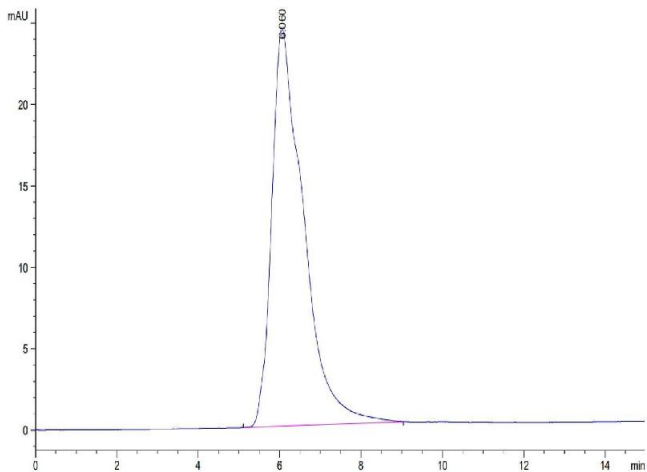
Surface Plasmon Resonance

Image 2. Human PD-L1, hFc Tag captured on CM5 Chip via Protein A can bind Biotinylated Human PD-1, His-Avi Tag with an affinity constant of 2.356 µM as determined in SPR assay (Biacore T200).



Size-exclusion chromatography-High Pressure Liquid Chromatography

Image 3. The purity of Human PD-L1 is greater than 95 % as determined by SEC-HPLC.



Please check the [product details page](#) for more images. Overall 6 images are available for ABIN7275430.