

Datasheet for ABIN7275453
PLAU Protein (AA 21-430) (His tag)

3 Images

[Go to Product page](#)

Overview

Quantity:	100 µg
Target:	PLAU
Protein Characteristics:	AA 21-430
Origin:	Cynomolgus
Source:	HEK-293 Cells
Protein Type:	Recombinant
Purification tag / Conjugate:	This PLAU protein is labelled with His tag.

Product Details

Purpose:	Cynomolgus PLAU/uPA Protein (active form)
Sequence:	Ser21-Leu430
Characteristics:	Recombinant Cynomolgus PLAU/uPA Protein (active form) is expressed from HEK293 with His tag at the C-Terminus. It contains Ser21-Leu430, which consists of two chains: Long chain A and chain B. The long chain A is further cleaved to yield a short chain A and N-Terminus fragment.
Purity:	> 95 % as determined by Tris-Bis PAGE, > 95 % as determined by HPLC
Sterility:	0.22 µm filtered
Endotoxin Level:	Less than 1 EU per µg by the LAL method.
Biological Activity Comment:	The affinity constant of 0.033 nM as determined in SPR assay (Biacore T200). See testing image for detail.

Target Details

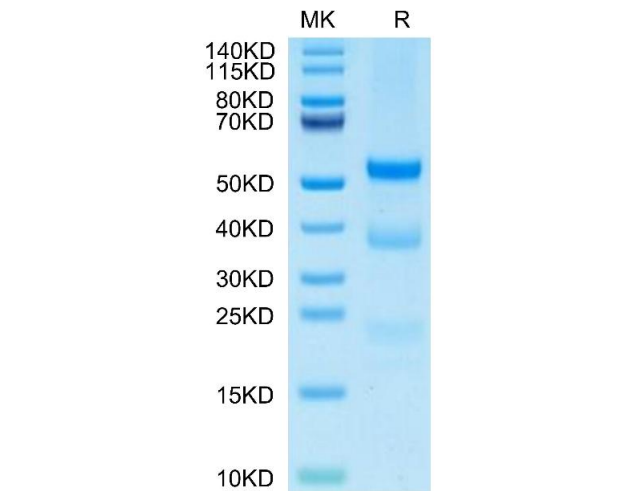
Target:	PLAU
Alternative Name:	PLAU (PLAU Products)
Background:	<p>Plasminogen activator, urokinase (uPA) is a secreted serine protease whose Dysregulation is often accompanied by various cancers. PLAU inhibition could suppress tumor growth.</p> <p>Collectively, PLAU is necessary for tumor progression and can be a diagnostic and prognostic biomarker in HNSCC.</p>
Molecular Weight:	47.23 kDa. Due to protein lysis and glycosylation, the protein migrates to 23-25 kDa (long chain A), 35-40 kDa (chain B) and 50-60 kDa (long chain A&chain B) based on Tris-Bis PAGE result.
UniProt:	A0A2K5WND1
Pathways:	Cellular Response to Molecule of Bacterial Origin , Carbohydrate Homeostasis , Autophagy , Smooth Muscle Cell Migration

Application Details

Restrictions:	For Research Use only
---------------	-----------------------

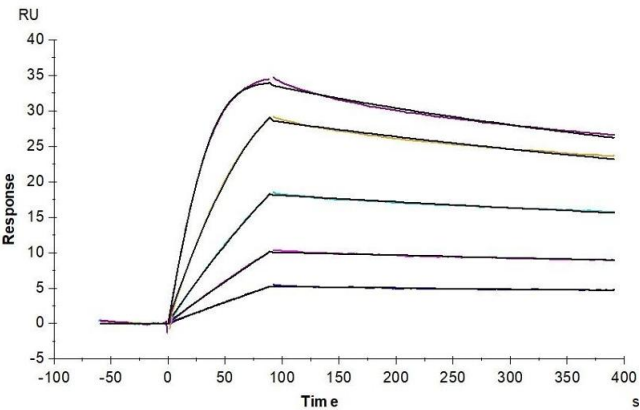
Handling

Format:	Lyophilized
Reconstitution:	Centrifuge the tube before opening. Reconstituting to a concentration more than 100 µg/mL is recommended. Dissolve the lyophilized protein in distilled water.
Buffer:	Lyophilized from 0.22µm filtered solution in PBS (pH 7.4). Normally 8 % trehalose is added as protectant before lyophilization.
Storage:	-20 °C,-80 °C
Storage Comment:	-20 to -80°C for 12 months as supplied from date of receipt.,-80°C for 3-6 months after reconstitution.,2-8°C for 2-7 days after reconstitution.,Recommend to aliquot the protein into smaller quantities for optimal storage. Please minimize freeze-thaw cycles.
Expiry Date:	12 months



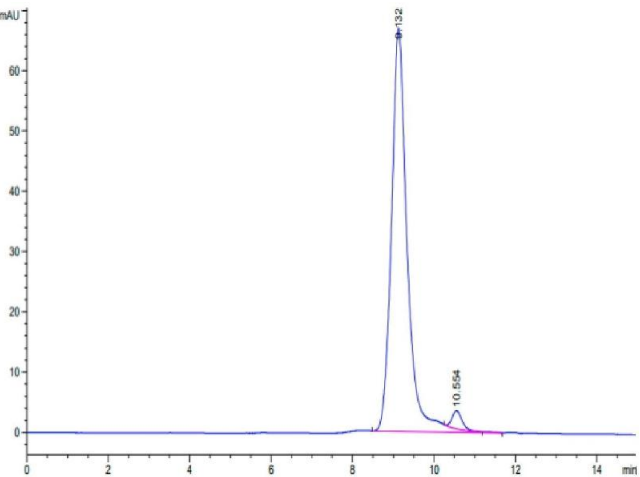
SDS-PAGE

Image 1. Cynomolgus PLAU on Tris-Bis PAGE under reduced condition. The purity is greater than 95 % .



Surface Plasmon Resonance

Image 2. Cynomolgus uPAR, His Tag immobilized on CM5 Chip can bind Cynomolgus PLAU, His Tag with an affinity constant of 0.033 nM as determined in SPR assay (Biacore T200).



Size-exclusion chromatography-High Pressure Liquid Chromatography

Image 3. The purity of Cynomolgus PLAU is greater than 95 % as determined by SEC-HPLC.