

Datasheet for ABIN7275459

**PLA2G1B Protein (AA 23-148) (Fc Tag)****2** Images[Go to Product page](#)

## Overview

Quantity:	100 µg
Target:	PLA2G1B
Protein Characteristics:	AA 23-148
Origin:	Human
Source:	HEK-293 Cells
Protein Type:	Recombinant
Purification tag / Conjugate:	This PLA2G1B protein is labelled with Fc Tag.

## Product Details

Purpose:	Human PLA2G1B Protein
Sequence:	Ala23-Ser148
Characteristics:	Recombinant Human PLA2G1B Protein is expressed from HEK293 with hFc tag at the C-Terminus. It contains Ala23-Ser148.
Purity:	> 95 % as determined by Tris-Bis PAGE, > 95 % as determined by HPLC
Sterility:	0.22 µm filtered
Endotoxin Level:	Less than 1EU per µg by the LAL method.

## Target Details

Target:	PLA2G1B
Alternative Name:	PLA2G1B ( <a href="#">PLA2G1B Products</a> )

## Target Details

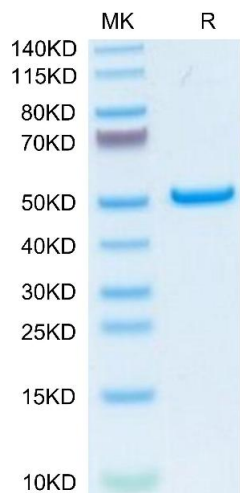
Background:	Phospholipase A2 (PLA2) plays crucial roles in diverse cellular responses, including phospholipid digestion and metabolism, host defense and signal transduction. PLA2 provides precursors for generation of eicosanoids, such as prostaglandins (PGs) and leukotrienes (LTs), when the cleaved fatty acid is arachidonic acid, platelet-activating factor (PAF) when the sn-1 position of the phosphatidylcholine contains an alkyl ether linkage and some bioactive lysophospholipids, such as lysophosphatidic acid (lysoPA).
Molecular Weight:	40.9 kDa. Due to glycosylation, the protein migrates to 50-55 kDa based on Tris-Bis PAGE result.
UniProt:	<a href="#">P04054</a>
Pathways:	<a href="#">Inositol Metabolic Process</a> , <a href="#">VEGF Signaling</a>

## Application Details

Restrictions:	For Research Use only
---------------	-----------------------

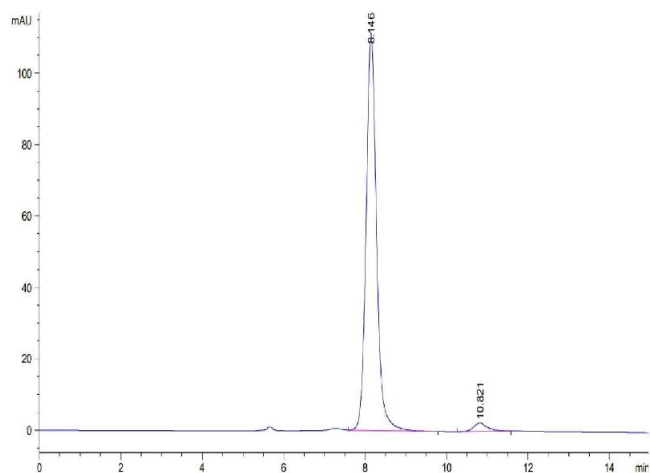
## Handling

Format:	Lyophilized
Reconstitution:	Centrifuge the tube before opening. Reconstituting to a concentration more than 100 µg/mL is recommended. Dissolve the lyophilized protein in distilled water.
Buffer:	Lyophilized from 0.22µm filtered solution in PBS ( pH 7.4). Normally 8 % trehalose is added as protectant before lyophilization.
Storage:	-20 °C,-80 °C
Storage Comment:	-20 to -80°C for 12 months as supplied from date of receipt.,-80°C for 3-6 months after reconstitution.,2-8°C for 2-7 days after reconstitution.,Recommend to aliquot the protein into smaller quantities for optimal storage. Please minimize freeze-thaw cycles.
Expiry Date:	12 months



SDS-PAGE

**Image 1.** Human PLA2G1B on Tris-Bis PAGE under reduced condition. The purity is greater than 95 % .



Size-exclusion chromatography-High Pressure Liquid Chromatography

**Image 2.** The purity of Human PLA2G1B is greater than 95 % as determined by SEC-HPLC.