

Datasheet for ABIN7275467

Prolactin Receptor Protein (PRLR) (AA 25-235) (Fc Tag)[Go to Product page](#)**2** Images

Overview

Quantity:	100 µg
Target:	Prolactin Receptor (PRLR)
Protein Characteristics:	AA 25-235
Origin:	Dog
Source:	HEK-293 Cells
Protein Type:	Recombinant
Purification tag / Conjugate:	This Prolactin Receptor protein is labelled with Fc Tag.

Product Details

Purpose:	Canine PRLR Protein
Sequence:	Gln25-Thr235
Characteristics:	Recombinant Canine PRLR Protein is expressed from HEK293 with hFc tag at the C-Terminus. It contains Gln25-Thr235.
Purity:	> 95 % as determined by Tris-Bis PAGE, > 95 % as determined by HPLC
Sterility:	0.22 µm filtered
Endotoxin Level:	Less than 1EU per µg by the LAL method.

Target Details

Target:	Prolactin Receptor (PRLR)
Alternative Name:	PRLR (PRLR Products)

Target Details

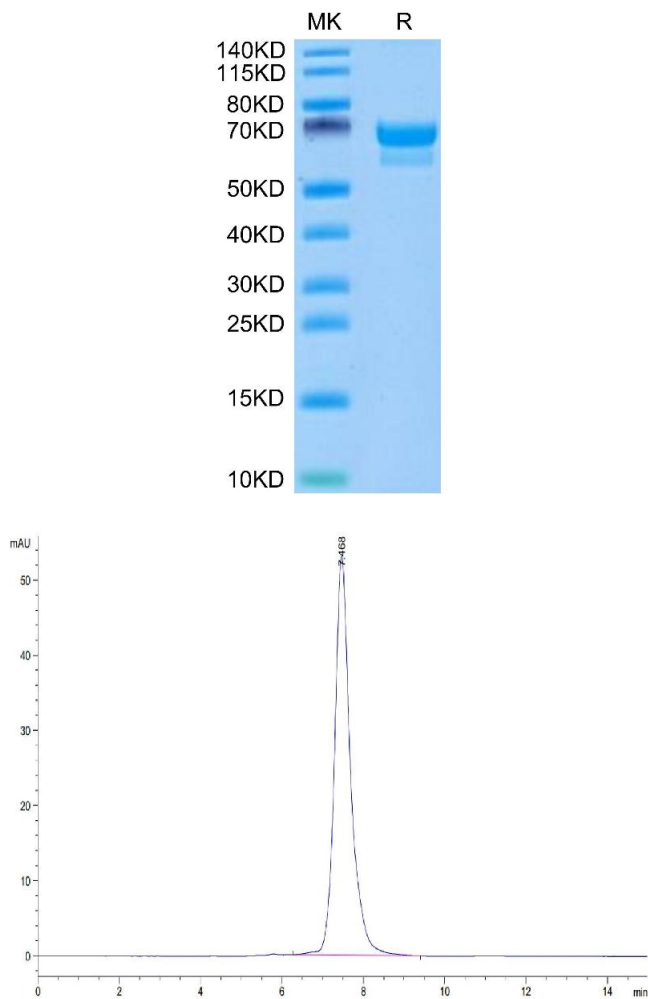
Background:	Prolactin receptor (PRLR) is highly expressed in a subset of human breast cancer and prostate cancer, which makes it a potential target for cancer treatment. In clinical trials, the blockade of PRLR was shown to be safe but with poor efficacy. It is therefore urgent to develop new therapies against PRLR target. Bispecific antibodies (BsAbs) could guide immune cells toward tumor cells, and produced remarkable effects in some cancers.
Molecular Weight:	53.89 kDa. Due to glycosylation, the protein migrates to 65-70 kDa based on Tris-Bis PAGE result.
NCBI Accession:	XM_038663941
Pathways:	JAK-STAT Signaling , Response to Growth Hormone Stimulus

Application Details

Restrictions:	For Research Use only
---------------	-----------------------

Handling

Format:	Lyophilized
Reconstitution:	Centrifuge the tube before opening. Reconstituting to a concentration more than 100 µg/mL is recommended. Dissolve the lyophilized protein in distilled water.
Buffer:	Lyophilized from 0.22µm filtered solution in PBS (pH 7.4). Normally 8 % trehalose is added as protectant before lyophilization.
Storage:	-20 °C,-80 °C
Storage Comment:	-20 to -80°C for 12 months as supplied from date of receipt.,-80°C for 3-6 months after reconstitution.,2-8°C for 2-7 days after reconstitution.,Recommend to aliquot the protein into smaller quantities for optimal storage. Please minimize freeze-thaw cycles.
Expiry Date:	12 months



SDS-PAGE

Image 1. Canine PRLR on Tris-Bis PAGE under reduced condition. The purity is greater than 95 % .

Size-exclusion chromatography-High Pressure Liquid Chromatography

Image 2. The purity of Canine PRLR is greater than 95 % as determined by SEC-HPLC.