



[Go to Product page](#)

Datasheet for ABIN7275478

PTP4A2 Protein (AA 1-164) (His tag)

2 Images

Overview

Quantity:	100 µg
Target:	PTP4A2
Protein Characteristics:	AA 1-164
Origin:	Human
Source:	Escherichia coli (E. coli)
Protein Type:	Recombinant
Purification tag / Conjugate:	This PTP4A2 protein is labelled with His tag.

Product Details

Purpose:	Human PRL-2/PTP4A2 Protein
Sequence:	Met1-Cys164
Characteristics:	Recombinant Human PRL-2/PTP4A2 Protein is expressed from E.coli with His tag at the N-Terminus.It contains Met1-Cys164.
Purity:	> 95 % as determined by Tris-Bis PAGE,> 95 % as determined by HPLC
Sterility:	0.22 µm filtered
Endotoxin Level:	Less than 1EU per µg by the LAL method.

Target Details

Target:	PTP4A2
Alternative Name:	PRL-2 (PTP4A2 Products)

Target Details

Background: Phosphatases of regenerating liver (PRL-1, PRL-2, and PRL-3, also known as PTP4A1, PTP4A2, and PTP4A3) control magnesium homeostasis through an association with the CNNM magnesium transport regulators. PRL-2 is a member of PTP family and has an important function in controlling cell growth.

Molecular Weight: 19.89 kDa same as Tris-Bis PAGE result.

Application Details

Restrictions: For Research Use only

Handling

Format: Liquid

Buffer: Supplied as 0.22µm filtered solution in 20 mM Tris, 250 mM NaCl, 1 mM DTT, 20 % Glycerol (pH 7.4).

Preservative: Dithiothreitol (DTT)

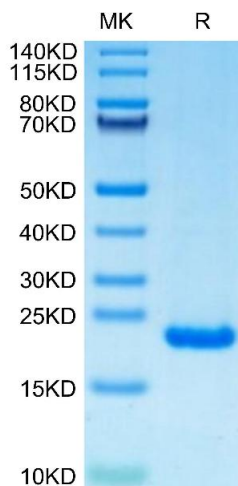
Precaution of Use: This product contains Dithiothreitol (DTT): a POISONOUS AND HAZARDOUS SUBSTANCE which should be handled by trained staff only.

Storage: -80 °C

Storage Comment: Valid for 12 months from date of receipt when stored at -80°C., Recommend to aliquot the protein into smaller quantities for optimal storage. Please minimize freeze-thaw cycles.

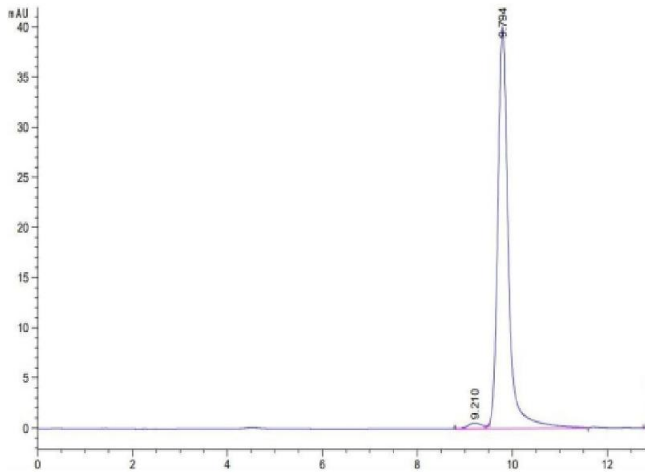
Expiry Date: 12 months

Images



SDS-PAGE

Image 1. Human PRL-2 on Tris-Bis PAGE under reduced condition. The purity is greater than 95 % .



Size-exclusion chromatography-High Pressure Liquid Chromatography

Image 2. The purity of Human PRL-2 is greater than 95 % as determined by SEC-HPLC.