



Datasheet for ABIN7275484

## WFDC1 Protein (AA 24-211) (His tag)



[Go to Product page](#)

### 2 Images

#### Overview

Quantity:	100 µg
Target:	WFDC1
Protein Characteristics:	AA 24-211
Origin:	Mouse
Source:	Escherichia coli (E. coli)
Protein Type:	Recombinant
Purification tag / Conjugate:	This WFDC1 protein is labelled with His tag.

#### Product Details

Purpose:	Mouse PS20 Protein
Sequence:	Gln24-Pro211
Characteristics:	Recombinant Mouse PS20 Protein is expressed from E.coli with His tag at the N-Terminus.It contains Gln24-Pro211.
Purity:	> 95 % as determined by Tris-Bis PAGE,> 95 % as determined by HPLC
Sterility:	0.22 µm filtered
Endotoxin Level:	Less than 1EU per µg by the LAL method.

#### Target Details

Target:	WFDC1
Alternative Name:	PS20 ( <a href="#">WFDC1 Products</a> )

## Target Details

**Background:** The whey acidic protein family member, WFDC1/ps20 is a permissivity factor in HIV infection. Herein we describe a contrasting role for ps20 in limiting MHV-1 infection. Intranasal MHV-1 infection produces a respiratory infection in mice. Using ps20 knockout mice we provide evidence that intranasal MHV-1 infection results in increased lung viral titers in ps20(-/-) compared to ps20(/) mice. Roles for ps20 in regulating expression of neutrophil-specific chemotactic factors, thereby potentially modulating neutrophil migration, and in modulating neutrophil susceptibility to MHV-1 infection.

**Molecular Weight:** 21.9 kDa. The protein migrates to 27-30 kDa based on Tris-Bis PAGE result.

**UniProt:** [Q9ESH5](#)

## Application Details

**Restrictions:** For Research Use only

## Handling

**Format:** Liquid

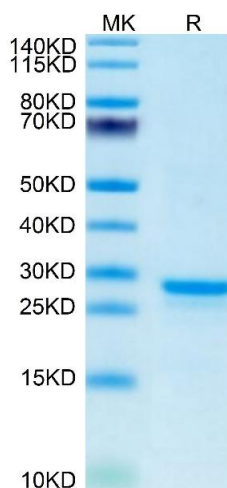
**Buffer:** Supplied as 0.22µm filtered solution in PBS ( pH 7.4).

**Storage:** -80 °C

**Storage Comment:** Valid for 12 months from date of receipt when stored at -80°C., Recommend to aliquot the protein into smaller quantities for optimal storage. Please minimize freeze-thaw cycles.

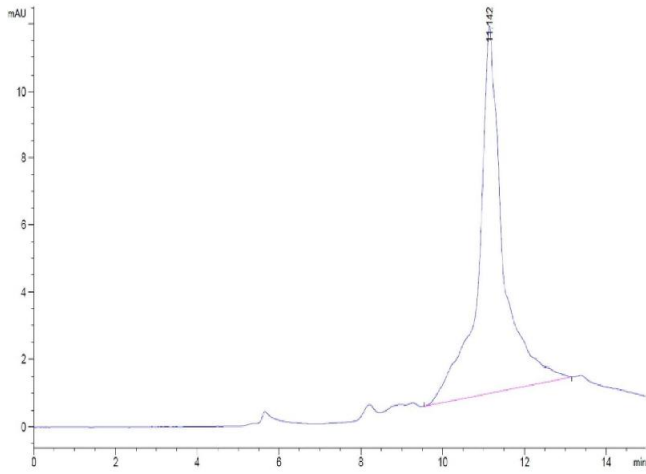
**Expiry Date:** 12 months

## Images



### SDS-PAGE

**Image 1.** Mouse PS20 on Tris-Bis PAGE under reduced condition. The purity is greater than 95 % .



### Size-exclusion chromatography-High Pressure Liquid Chromatography

**Image 2.** The purity of Mouse PS20 is greater than 95 % as determined by SEC-HPLC.