



[Go to Product page](#)

Datasheet for ABIN7275486

SELPLG Protein (AA 42-320) (His tag)

1 Image

Overview

Quantity:	100 µg
Target:	SELPLG
Protein Characteristics:	AA 42-320
Origin:	Human
Source:	HEK-293 Cells
Protein Type:	Recombinant
Purification tag / Conjugate:	This SELPLG protein is labelled with His tag.

Product Details

Purpose:	Human PSGL-1 Protein
Sequence:	Gln42-Cys320
Characteristics:	Recombinant Human PSGL-1 Protein is expressed from HEK293 with His tag at the C-Terminus. It contains Gln42-Cys320.
Purity:	> 95 % as determined by Tris-Bis PAGE
Sterility:	0.22 µm filtered
Endotoxin Level:	Less than 1EU per µg by the LAL method.

Target Details

Target:	SELPLG
Alternative Name:	PSGL-1 (SELPLG Products)

Target Details

Background: P-selectin glycoprotein ligand-1 (PSGL-1) has long been studied as an adhesion molecule involved in immune cell trafficking and is recognized as a regulator of many facets of immune responses by myeloid cells. PSGL-1 also regulates T cell migration during homeostasis and inflammatory settings.

Molecular Weight: 30 kDa. Due to glycosylation, the protein migrates to 75-120 kDa based on Tris-Bis PAGE result.

Application Details

Restrictions: For Research Use only

Handling

Format: Lyophilized

Reconstitution: Centrifuge the tube before opening. Reconstituting to a concentration more than 100 µg/mL is recommended. Dissolve the lyophilized protein in distilled water.

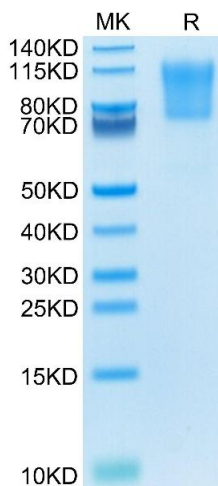
Buffer: Lyophilized from 0.22µm filtered solution in PBS (pH 7.4). Normally 8 % trehalose is added as protectant before lyophilization.

Storage: -20 °C,-80 °C

Storage Comment: -20 to -80°C for 12 months as supplied from date of receipt.,-80°C for 3-6 months after reconstitution.,2-8°C for 2-7 days after reconstitution.,Recommend to aliquot the protein into smaller quantities for optimal storage. Please minimize freeze-thaw cycles.

Expiry Date: 12 months

Images



SDS-PAGE

Image 1. Human PSGL-1 on Tris-Bis PAGE under reduced condition. The purity is greater than 95 % .