

Datasheet for ABIN7275488

PSMA Protein (AA 44-750) (His tag)**3** Images[Go to Product page](#)

Overview

Quantity:	100 µg
Target:	PSMA (FOLH1)
Protein Characteristics:	AA 44-750
Origin:	Cynomolgus
Source:	HEK-293 Cells
Protein Type:	Recombinant
Purification tag / Conjugate:	This PSMA protein is labelled with His tag.

Product Details

Purpose:	Cynomolgus PSMA/FOLH1 Protein
Sequence:	Lys44-Ala750
Characteristics:	Recombinant Cynomolgus PSMA/FOLH1 Protein is expressed from HEK293 with His tag at the N-Terminus. It contains Lys44-Ala750.
Purity:	> 95 % as determined by Tris-Bis PAGE, > 95 % as determined by HPLC
Sterility:	0.22 µm filtered
Endotoxin Level:	Less than 1EU per µg by the LAL method.
Biological Activity Comment:	Immobilized Cynomolgus PSMA, His Tag at 2µg/ml (100µl/Well) on the plate. Dose response curve for Anti-PSMA Antibody, hFc Tag with the EC50 of 37.5ng/ml determined by ELISA. See testing image for detail.

Target Details

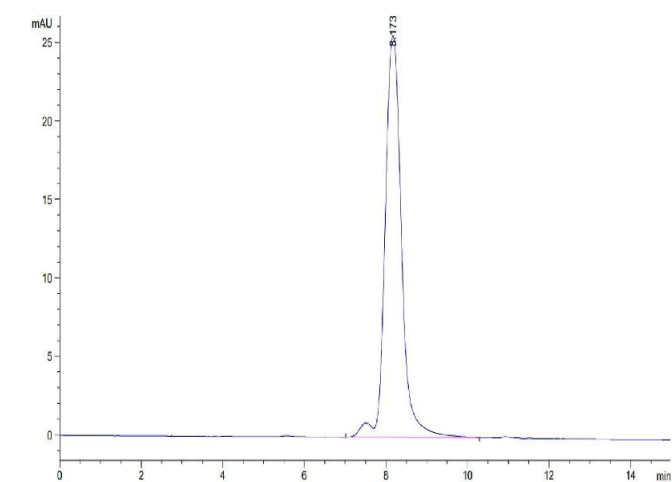
Target:	PSMA (FOLH1)
Alternative Name:	PSMA (FOLH1 Products)
Background:	Prostate-specific membrane antigen (PSMA) is an enzyme that in humans is encoded by the FOLH1 (folate hydrolase 1) gene, also known as Glutamate carboxypeptidase II (GCPII). Human PSMA is highly expressed in the prostate, roughly a hundred times greater than in most other tissues. In some prostate cancers, PSMA is the second-most upregulated gene product, with an 8- to 12-fold increase over levels in noncancerous prostate cells.
Molecular Weight:	80.6 kDa. Due to glycosylation, the protein migrates to 90-110 kDa based on Tris-Bis PAGE result.
UniProt:	A0A2K5VNZ0

Application Details

Restrictions:	For Research Use only
---------------	-----------------------

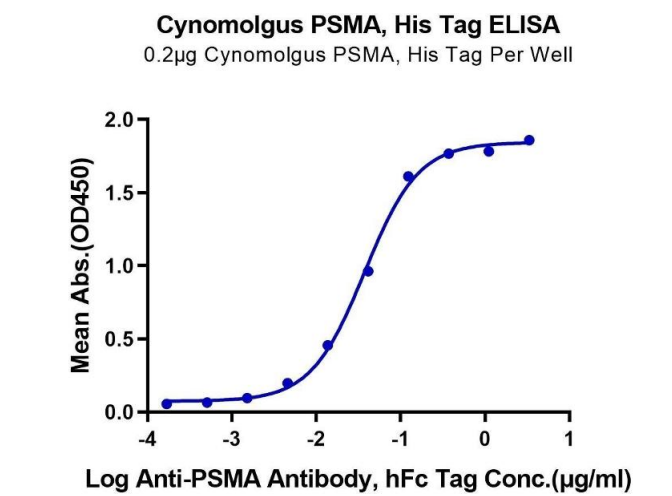
Handling

Format:	Liquid
Buffer:	Supplied as 0.22µm filtered solution in PBS (pH 7.4).
Storage:	-80 °C
Storage Comment:	Valid for 12 months from date of receipt when stored at -80°C., Recommend to aliquot the protein into smaller quantities for optimal storage. Please minimize freeze-thaw cycles.
Expiry Date:	12 months



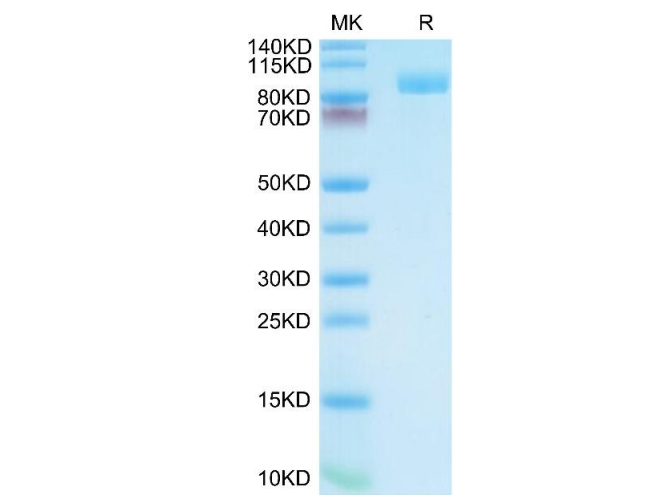
Size-exclusion chromatography-High Pressure Liquid Chromatography

Image 1. The purity of Cynomolgus PSMA is greater than 95 % as determined by SEC-HPLC



ELISA

Image 2. Immobilized Cynomolgus PSMA, His Tag at 2 µg/mL (100 µL/Well) on the plate. Dose response curve for Anti-PSMA Antibody, hFc Tag with the EC50 of 37.5 ng/mL determined by ELISA.



SDS-PAGE

Image 3. Cynomolgus PSMA on Tris-Bis PAGE under reduced condition. The purity is greater than 95 % .