

Datasheet for ABIN7275493

PSMA Protein (AA 44-750) (Fc Tag)**3** Images[Go to Product page](#)

Overview

Quantity:	100 µg
Target:	PSMA (FOLH1)
Protein Characteristics:	AA 44-750
Origin:	Human
Source:	HEK-293 Cells
Protein Type:	Recombinant
Purification tag / Conjugate:	This PSMA protein is labelled with Fc Tag.

Product Details

Purpose:	Human PSMA/FOLH1 Protein
Sequence:	Lys44-Ala750
Characteristics:	Recombinant Human PSMA/FOLH1 Protein is expressed from HEK293 with hFc tag at the N-Terminus. It contains Lys44-Ala750.
Purity:	> 95 % as determined by Tris-Bis PAGE, > 95 % as determined by HPLC
Sterility:	0.22 µm filtered
Endotoxin Level:	Less than 1EU per µg by the LAL method.
Biological Activity Comment:	Immobilized Human PSMA, hFc Tag at 2µg/ml (100µl/Well) on the plate. Dose response curve for Biotinylated Anti-PSMA Antibody, hFc Tag with the EC50 of 14.3ng/ml determined by ELISA. See testing image for detail.

Target Details

Target:	PSMA (FOLH1)
Alternative Name:	PSMA (FOLH1 Products)
Background:	Prostate-specific membrane antigen (PSMA) is an enzyme that in humans is encoded by the FOLH1 (folate hydrolase 1) gene, also known as Glutamate carboxypeptidase II (GCPII). Human PSMA is highly expressed in the prostate, roughly a hundred times greater than in most other tissues. In some prostate cancers, PSMA is the second-most upregulated gene product, with an 8- to 12-fold increase over levels in noncancerous prostate cells.
Molecular Weight:	106.8 kDa. Due to glycosylation, the protein migrates to 110-120 kDa based on Tris-Bis PAGE result.

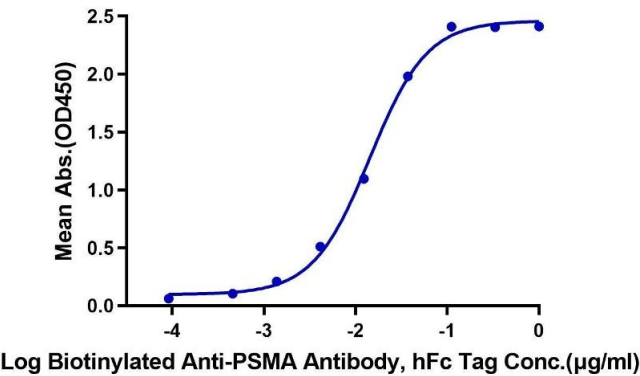
Application Details

Restrictions:	For Research Use only
---------------	-----------------------

Handling

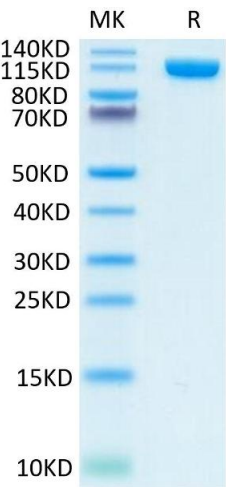
Format:	Lyophilized
Reconstitution:	Centrifuge the tube before opening. Reconstituting to a concentration more than 100 µg/mL is recommended. Dissolve the lyophilized protein in distilled water.
Buffer:	Lyophilized from 0.22µm filtered solution in PBS (pH 7.4). Normally 8 % trehalose is added as protectant before lyophilization.
Storage:	-20 °C,-80 °C
Storage Comment:	-20 to -80°C for 12 months as supplied from date of receipt., -80°C for 3-6 months after reconstitution., 2-8°C for 2-7 days after reconstitution., Recommend to aliquot the protein into smaller quantities for optimal storage. Please minimize freeze-thaw cycles.
Expiry Date:	12 months

Human PSMA, hFc Tag ELISA
0.2µg Human PSMA, hFc Tag Per Well



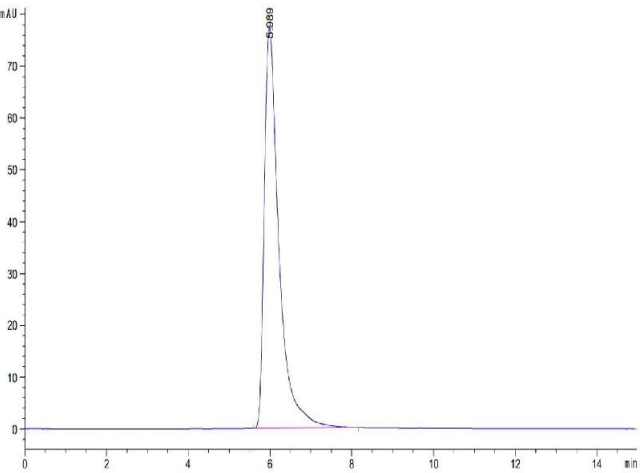
ELISA

Image 1. Immobilized Human PSMA, hFc Tag at 2 µg/mL (100 µL/Well) on the plate. Dose response curve for Biotinylated Anti-PSMA Antibody, hFc Tag with the EC50 of 14.3 ng/mL determined by ELISA.



SDS-PAGE

Image 2. Human PSMA on Tris-Bis PAGE under reduced condition. The purity is greater than 95 % .



Size-exclusion chromatography-High Pressure Liquid Chromatography

Image 3. The purity of Human PSMA is greater than 95 % as determined by SEC-HPLC.