

Datasheet for ABIN7275561

SEMA4D/CD100 Protein (AA 24-734) (His tag)**3** Images[Go to Product page](#)

Overview

| | |
|-------------------------------|---|
| Quantity: | 100 µg |
| Target: | SEMA4D/CD100 (SEMA4D) |
| Protein Characteristics: | AA 24-734 |
| Origin: | Cynomolgus |
| Source: | HEK-293 Cells |
| Protein Type: | Recombinant |
| Purification tag / Conjugate: | This SEMA4D/CD100 protein is labelled with His tag. |

Product Details

| | |
|------------------------------|---|
| Purpose: | Cynomolgus Semaphorin 4D/SEMA4D/CD100 Protein |
| Sequence: | Phe24-Arg734 |
| Characteristics: | Recombinant Cynomolgus Semaphorin 4D/SEMA4D/CD100 Protein is expressed from HEK293 with His tag at the C-Terminus. It contains Phe24-Arg734. |
| Purity: | > 95 % as determined by Tris-Bis PAGE, > 95 % as determined by HPLC |
| Sterility: | 0.22 µm filtered |
| Endotoxin Level: | Less than 1EU per µg by the LAL method. |
| Biological Activity Comment: | Immobilized Cynomolgus Semaphorin 4D, His Tag at 2µg/ml (100µl/well) on the plate. Dose response curve for Anti-Semaphorin 4D Antibody , hFc Tag with the EC50 of 9.3ng/ml determined by ELISA. See testing image for detail. |

Target Details

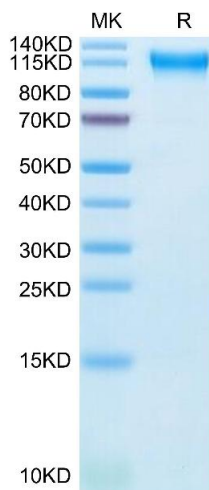
| | |
|-------------------|--|
| Target: | SEMA4D/CD100 (SEMA4D) |
| Alternative Name: | Semaphorin 4D (SEMA4D Products) |
| Background: | Semaphorin 4D (Sema4D) is a multifunctional protein widely expressed in an organism that plays an important role in the control of many physiological and pathological processes, including immunoregulation, neurogenesis, angiogenesis, and tumor progression. |
| Molecular Weight: | 80.1 kDa. Due to glycosylation, the protein migrates to 90-120 kDa based on Tris-Bis PAGE result. |
| UniProt: | A0A2K5TZC9 |
| Pathways: | Regulation of Cell Size |

Application Details

| | |
|---------------|-----------------------|
| Restrictions: | For Research Use only |
|---------------|-----------------------|

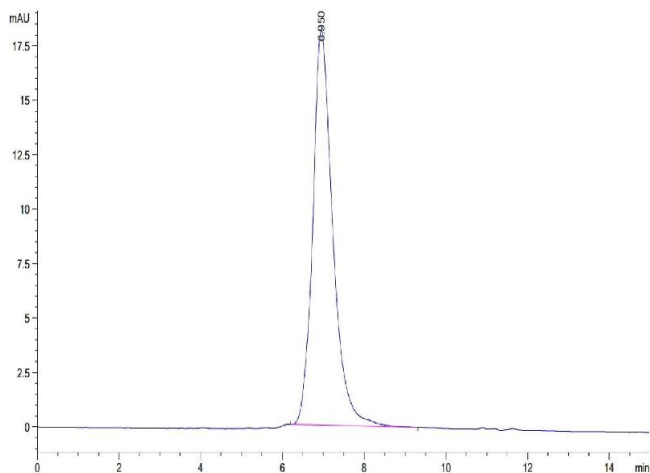
Handling

| | |
|------------------|---|
| Format: | Lyophilized |
| Reconstitution: | Centrifuge the tube before opening. Reconstituting to a concentration more than 100 µg/mL is recommended. Dissolve the lyophilized protein in distilled water. |
| Buffer: | Lyophilized from 0.22µm filtered solution in PBS (pH 7.4). Normally 8 % trehalose is added as protectant before lyophilization. |
| Storage: | -20 °C,-80 °C |
| Storage Comment: | -20 to -80°C for 12 months as supplied from date of receipt., -80°C for 3-6 months after reconstitution., 2-8°C for 2-7 days after reconstitution., Recommend to aliquot the protein into smaller quantities for optimal storage. Please minimize freeze-thaw cycles. |
| Expiry Date: | 12 months |



SDS-PAGE

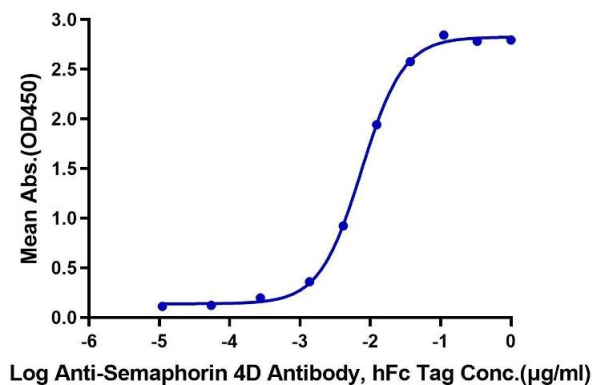
Image 1. Cynomolgus Semaphorin 4D on Tris-Bis PAGE under reduced condition. The purity is greater than 95 % .



Size-exclusion chromatography-High Pressure Liquid Chromatography

Image 2. The purity of Cynomolgus Semaphorin 4D is greater than 95 % as determined by SEC-HPLC.

Cynomolgus Semaphorin 4D, His Tag ELISA
0.2µg Cynomolgus Semaphorin 4D, His Tag Per Well



ELISA

Image 3. Immobilized Cynomolgus Semaphorin 4D, His Tag at 2 µg/mL (100 µL/well) on the plate. Dose response curve for Anti-Semaphorin 4D Antibody , hFc Tag with the EC50 of 9.3 ng/mL determined by ELISA.