

Datasheet for ABIN7275571
SEZ6 Protein (AA 20-927) (His tag)

3 Images

[Go to Product page](#)

Overview

Quantity:	100 µg
Target:	SEZ6
Protein Characteristics:	AA 20-927
Origin:	Cynomolgus
Source:	HEK-293 Cells
Protein Type:	Recombinant
Purification tag / Conjugate:	This SEZ6 protein is labelled with His tag.

Product Details

Purpose:	Cynomolgus SEZ6 Protein
Sequence:	Leu20-His927
Characteristics:	Recombinant Cynomolgus SEZ6 Protein is expressed from HEK293 with His tag at the C-Terminus. It contains Leu20-His927.
Purity:	> 95 % as determined by Tris-Bis PAGE, > 95 % as determined by HPLC
Sterility:	0.22 µm filtered
Endotoxin Level:	Less than 1EU per µg by the LAL method.
Biological Activity Comment:	Immobilized Cynomolgus SEZ6, His Tag at 5µg/ml (100µl/Well) on the plate. Dose response curve for Anti-SEZ6 Antibody, hFc Tag with the EC50 of 22.7ng/ml determined by ELISA. See testing image for detail.

Target Details

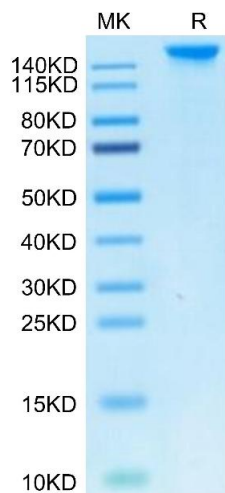
Target:	SEZ6
Alternative Name:	SEZ6 (SEZ6 Products)
Background:	Seizure-related protein 6 (Sez6) contributes to chronic pain development as sez6 knockout mice show attenuated pain behaviours after peripheral nerve injury, compared with control mice. The type I transmembrane isoform of Sez6 is cleaved by the β -amyloid precursor protein cleavage enzyme 1 (BACE1), resulting in Sez6 extracellular domain shedding from the neuron surface.
Molecular Weight:	99.11 kDa. Due to glycosylation, the protein migrates to 150-180 kDa based on Tris-Bis PAGE result.
UniProt:	A0A2K5WPJ4
Pathways:	Synaptic Membrane

Application Details

Restrictions:	For Research Use only
---------------	-----------------------

Handling

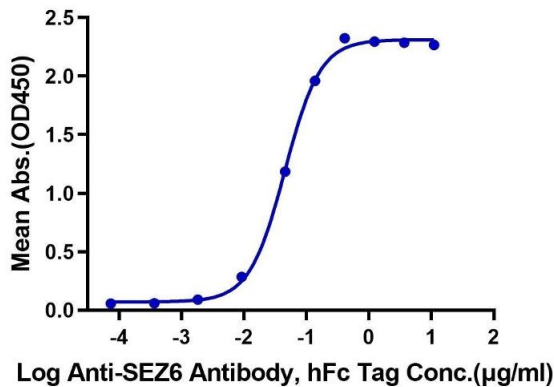
Format:	Lyophilized
Reconstitution:	Centrifuge the tube before opening. Reconstituting to a concentration more than 100 μ g/mL is recommended. Dissolve the lyophilized protein in distilled water.
Buffer:	Lyophilized from 0.22 μ m filtered solution in PBS (pH 7.4). Normally 8 % trehalose is added as protectant before lyophilization.
Storage:	-20 $^{\circ}$ C,-80 $^{\circ}$ C
Storage Comment:	-20 to -80 $^{\circ}$ C for 12 months as supplied from date of receipt.,-80 $^{\circ}$ C for 3-6 months after reconstitution.,2-8 $^{\circ}$ C for 2-7 days after reconstitution.,Recommend to aliquot the protein into smaller quantities for optimal storage. Please minimize freeze-thaw cycles.
Expiry Date:	12 months



SDS-PAGE

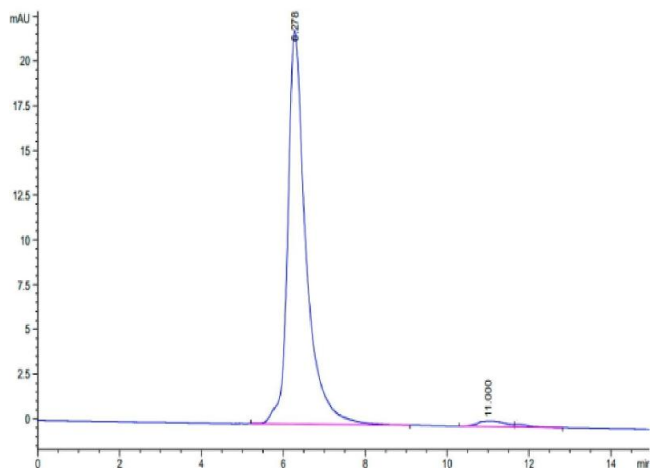
Image 1. Cynomolgus SEZ6 on Tris-Bis PAGE under reduced condition. The purity is greater than 95 % .

Cynomolgus SEZ6, His Tag ELISA
0.5µg Cynomolgus SEZ6, His Tag Per Well



ELISA

Image 2. Immobilized Cynomolgus SEZ6, His Tag at 5 µg/mL (100 µL/Well) on the plate. Dose response curve for Anti-SEZ6 Antibody, hFc Tag with the EC50 of 22.7 ng/mL determined by ELISA.



Size-exclusion chromatography-High Pressure Liquid Chromatography

Image 3. The purity of Cynomolgus SEZ6 is greater than 95 % as determined by SEC-HPLC.