

Datasheet for ABIN7275572
SEZ6 Protein (AA 20-925) (His tag)

4 Images

[Go to Product page](#)

Overview

Quantity:	100 µg
Target:	SEZ6
Protein Characteristics:	AA 20-925
Origin:	Human
Source:	HEK-293 Cells
Protein Type:	Recombinant
Purification tag / Conjugate:	This SEZ6 protein is labelled with His tag.

Product Details

Purpose:	Human SEZ6 Protein
Sequence:	Leu20-His925
Characteristics:	Recombinant Human SEZ6 Protein is expressed from HEK293 with His tag at the C-Terminus. It contains Leu20-His925.
Purity:	> 95 % as determined by Tris-Bis PAGE
Sterility:	0.22 µm filtered
Endotoxin Level:	Less than 1EU per µg by the LAL method.
Biological Activity Comment:	Immobilized Human SEZ6, His Tag at 0.5µg/ml (100µl/well) on the plate. Dose response curve for Anti-SEZ6 Antibody, hFc Tag with the EC50 of 13.2ng/ml determined by ELISA. See testing image for detail.

Target Details

Target:	SEZ6
Alternative Name:	SEZ6 (SEZ6 Products)
Background:	Seizure-related protein 6 (Sez6) contributes to chronic pain development as sez6 knockout mice show attenuated pain behaviours after peripheral nerve injury, compared with control mice. The type I transmembrane isoform of Sez6 is cleaved by the β -amyloid precursor protein cleavage enzyme 1 (BACE1), resulting in Sez6 extracellular domain shedding from the neuron surface.
Molecular Weight:	98.9 kDa. Due to glycosylation, the protein migrates to 145-150 kDa based on Tris-Bis PAGE result.
Pathways:	Synaptic Membrane

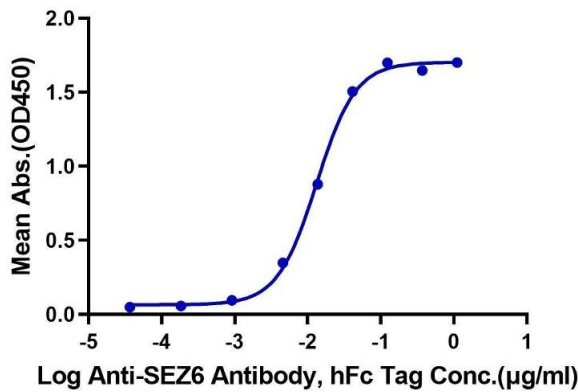
Application Details

Restrictions:	For Research Use only
---------------	-----------------------

Handling

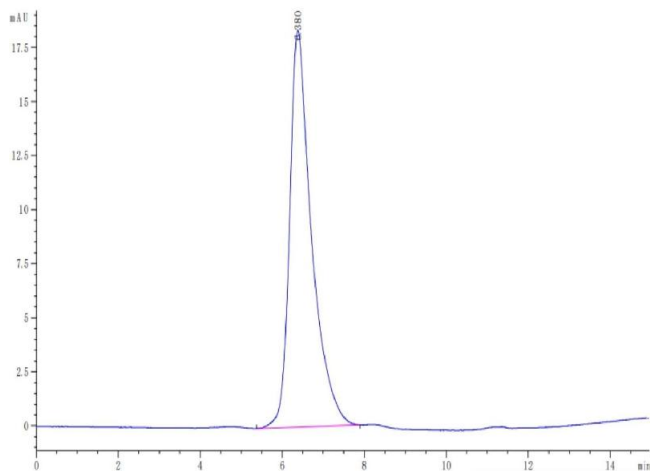
Format:	Lyophilized
Reconstitution:	Centrifuge the tube before opening. Reconstituting to a concentration more than 100 μ g/mL is recommended. Dissolve the lyophilized protein in distilled water.
Buffer:	Lyophilized from 0.22 μ m filtered solution in PBS (pH 7.4). Normally 8 % trehalose is added as protectant before lyophilization.
Storage:	-20 °C,-80 °C
Storage Comment:	-20 to -80°C for 12 months as supplied from date of receipt.,-80°C for 3-6 months after reconstitution.,-2-8°C for 2-7 days after reconstitution.,Recommend to aliquot the protein into smaller quantities for optimal storage. Please minimize freeze-thaw cycles.
Expiry Date:	12 months

Human SEZ6, His Tag ELISA
0.05µg Human SEZ6, His Tag Per Well



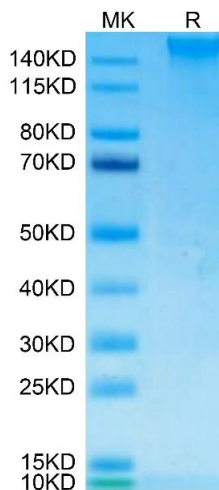
ELISA

Image 1. Immobilized Human SEZ6, His Tag at 0.5 µg/mL (100 µL/well) on the plate. Dose response curve for Anti-SEZ6 Antibody, hFc Tag with the EC50 of 13.2 ng/mL determined by ELISA.



Size-exclusion chromatography-High Pressure Liquid Chromatography

Image 2. The purity of Human SEZ6 is greater than 95 % as determined by SEC-HPLC.



SDS-PAGE

Image 3. Human SEZ6 on Tris-Bis PAGE under reduced condition. The purity is greater than 95 % .

Please check the [product details page](#) for more images. Overall 4 images are available for ABIN7275572.