

Datasheet for ABIN7275573

SEZ6L2 Protein (AA 28-844) (His tag)[Go to Product page](#)**2** Images

Overview

Quantity:	100 µg
Target:	SEZ6L2
Protein Characteristics:	AA 28-844
Origin:	Human
Source:	HEK-293 Cells
Protein Type:	Recombinant
Purification tag / Conjugate:	This SEZ6L2 protein is labelled with His tag.

Product Details

Purpose:	Human SEZ6L2 Protein
Sequence:	Leu28-Asn844
Characteristics:	Recombinant Human SEZ6L2 Protein is expressed from HEK293 with His tag at the C-Terminus. It contains Leu28-Asn844.
Purity:	> 95 % as determined by Tris-Bis PAGE, > 95 % as determined by HPLC
Sterility:	0.22 µm filtered
Endotoxin Level:	Less than 1EU per µg by the LAL method.

Target Details

Target:	SEZ6L2
Alternative Name:	SEZ6L2 (SEZ6L2 Products)

Target Details

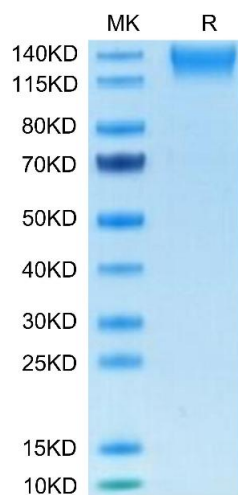
Background:	Seizure-related 6 homolog (mouse)-like 2 (SEZ6L2) was shown to be involved in transcription of a type 1 transmembrane protein for regulating cell fate. SEZ6L2 was significantly up-regulated in tumour tissues of patients with CRC compared with adjacent normal tissues. Up-regulation of SEZ6L2 was correlated with a poor prognosis in patients with CRC. Furthermore, SEZ6L2 expression was inversely correlated with the expression of cytochrome C in malignant tissues in patients with CRC.
Molecular Weight:	88.5 kDa. Due to glycosylation, the protein migrates to 120-140 kDa based on Tris-Bis PAGE result.

Application Details

Restrictions:	For Research Use only
---------------	-----------------------

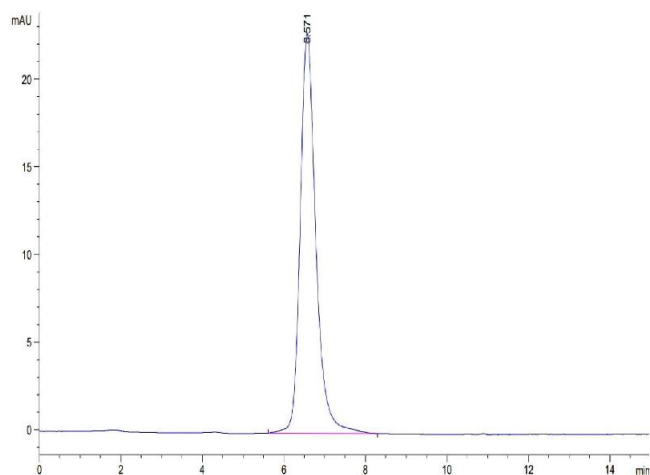
Handling

Format:	Lyophilized
Reconstitution:	Centrifuge the tube before opening. Reconstituting to a concentration more than 100 µg/mL is recommended. Dissolve the lyophilized protein in distilled water.
Buffer:	Lyophilized from 0.22µm filtered solution in PBS (pH 7.4). Normally 8 % trehalose is added as protectant before lyophilization.
Storage:	-20 °C,-80 °C
Storage Comment:	-20 to -80°C for 12 months as supplied from date of receipt.,-80°C for 3-6 months after reconstitution.,2-8°C for 2-7 days after reconstitution.,Recommend to aliquot the protein into smaller quantities for optimal storage. Please minimize freeze-thaw cycles.
Expiry Date:	12 months



SDS-PAGE

Image 1. Human SEZ6L2 on Tris-Bis PAGE under reduced condition. The purity is greater than 95 % .



Size-exclusion chromatography-High Pressure Liquid Chromatography

Image 2. The purity of Human SEZ6L2 is greater than 95 % as determined by SEC-HPLC.