

Datasheet for ABIN7275577
PEDF Protein (AA 20-417) (His tag)[Go to Product page](#)

2 Images

Overview

Quantity:	100 µg
Target:	PEDF (SERPINF1)
Protein Characteristics:	AA 20-417
Origin:	Mouse
Source:	HEK-293 Cells
Protein Type:	Recombinant
Purification tag / Conjugate:	This PEDF protein is labelled with His tag.

Product Details

Purpose:	Mouse Serpin F1/PEDF Protein
Sequence:	Gln20-Thr417
Characteristics:	Recombinant Mouse Serpin F1/PEDF Protein is expressed from HEK293 with His tag at the C-Terminus. It contains Gln20-Thr417.
Purity:	> 95 % as determined by Tris-Bis PAGE, > 95 % as determined by HPLC
Sterility:	0.22 µm filtered
Endotoxin Level:	Less than 1EU per µg by the LAL method.

Target Details

Target:	PEDF (SERPINF1)
Alternative Name:	Serpin F1 (SERPINF1 Products)

Target Details

Background:	Pigment epithelium-derived factor (PEDF) is an important antiangiogenic and antitumorigenic factor in a variety of cancer forms, including pancreatic cancer. PEDF is mainly secreted as a soluble monomeric glycoprotein. In human pancreatic cancer PEDF levels are decreased, both in the tissue and serum. The decrease is associated with increased tumor angiogenesis, fibrosis, inflammation, autophagy, occurrence of liver metastasis and worse prognosis.
Molecular Weight:	45.4 kDa. Due to glycosylation, the protein migrates to 48-55 kDa based on Tris-Bis PAGE result.
UniProt:	P97298

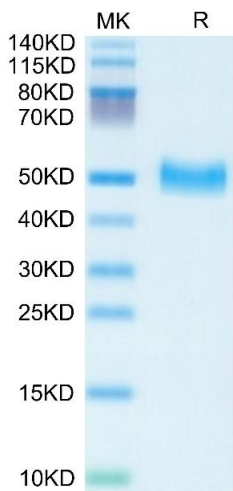
Application Details

Restrictions:	For Research Use only
---------------	-----------------------

Handling

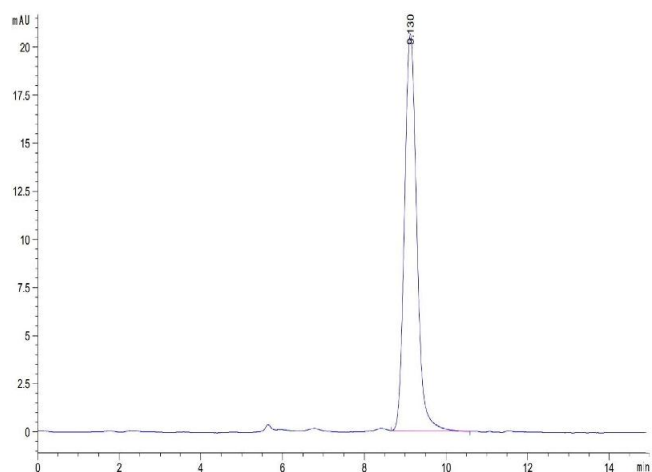
Format:	Liquid
Buffer:	Supplied as 0.22µm filtered solution in 20 mM Tris, 500 mM NaCl (pH 8.0).
Storage:	-80 °C
Storage Comment:	Valid for 12 months from date of receipt when stored at -80°C., Recommend to aliquot the protein into smaller quantities for optimal storage. Please minimize freeze-thaw cycles.
Expiry Date:	12 months

Images



SDS-PAGE

Image 1. Mouse Serpin F1/PEDF on Tris-Bis PAGE under reduced condition. The purity is greater than 95 % .



Size-exclusion chromatography-High Pressure Liquid Chromatography

Image 2. The purity of Mouse Serpin F1/PEDF is greater than 95 % as determined by SEC-HPLC.