

Datasheet for ABIN7275583
CD22 Protein (AA 20-686) (His tag)[Go to Product page](#)

2 Images

Overview

Quantity:	100 µg
Target:	CD22
Protein Characteristics:	AA 20-686
Origin:	Rhesus Monkey
Source:	HEK-293 Cells
Protein Type:	Recombinant
Purification tag / Conjugate:	This CD22 protein is labelled with His tag.

Product Details

Purpose:	Rhesus macaque Siglec-2/CD22 Protein
Sequence:	Ser20-Arg686
Characteristics:	Recombinant Rhesus macaque Siglec-2/CD22 Protein is expressed from HEK293 with His tag at the C-Terminus. It contains Ser20-Arg686.
Purity:	> 95 % as determined by Tris-Bis PAGE, > 95 % as determined by HPLC
Sterility:	0.22 µm filtered
Endotoxin Level:	Less than 1EU per µg by the LAL method.

Target Details

Target:	CD22
Alternative Name:	Siglec-2 (CD22 Products)

Target Details

Background: CD22, or cluster of differentiation-22, is a molecule belonging to the SIGLEC family of lectins. It is found on the surface of mature B cells and to a lesser extent on some immature B cells. CD22 a member of the immunoglobulin superfamily. CD22 functions as an inhibitory receptor for B cell receptor (BCR) signaling. It is also involved in the B cell trafficking to Peyer's patches in mice.

Molecular Weight: 76.14 kDa. Due to glycosylation, the protein migrates to 100-120 kDa based on Tris-Bis PAGE result.

Application Details

Restrictions: For Research Use only

Handling

Format: Lyophilized

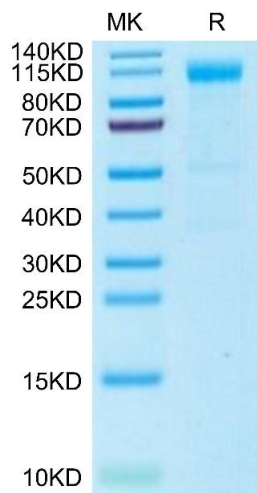
Reconstitution: Centrifuge the tube before opening. Reconstituting to a concentration more than 100 µg/mL is recommended. Dissolve the lyophilized protein in distilled water.

Buffer: Lyophilized from 0.22µm filtered solution in PBS (pH 7.4). Normally 8 % trehalose is added as protectant before lyophilization.

Storage: -20 °C,-80 °C

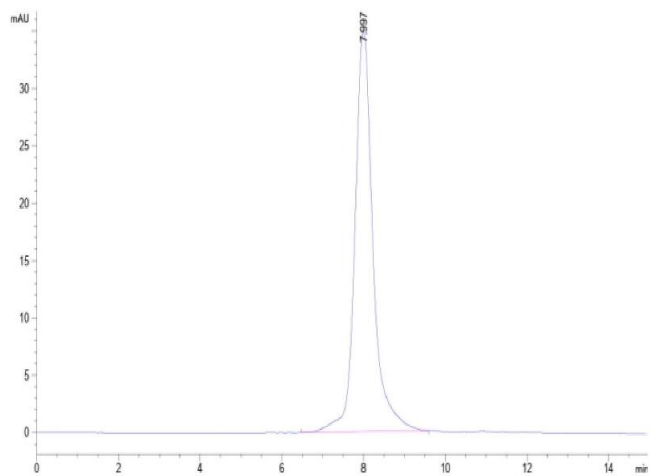
Storage Comment: -20 to -80°C for 12 months as supplied from date of receipt.,-80°C for 3-6 months after reconstitution.,2-8°C for 2-7 days after reconstitution.,Recommend to aliquot the protein into smaller quantities for optimal storage. Please minimize freeze-thaw cycles.

Expiry Date: 12 months



SDS-PAGE

Image 1. Rhesus macaque Siglec-2 on Tris-Bis PAGE under reduced condition. The purity is greater than 95 % .



Size-exclusion chromatography-High Pressure Liquid Chromatography

Image 2. The purity of Rhesus macaque Siglec-2 is greater than 95 % as determined by SEC-HPLC.