

Datasheet for ABIN7275585

**SIGLEC15 Protein (AA 60-322) (His-Avi Tag,Biotin)****3** Images[Go to Product page](#)

## Overview

Quantity:	100 µg
Target:	SIGLEC15
Protein Characteristics:	AA 60-322
Origin:	Cynomolgus
Source:	HEK-293 Cells
Protein Type:	Recombinant
Purification tag / Conjugate:	This SIGLEC15 protein is labelled with His-Avi Tag,Biotin.

## Product Details

Purpose:	Biotinylated Cynomolgus Siglec-15/CD33L3 Protein
Sequence:	Met60-Thr322
Characteristics:	Recombinant Biotinylated Cynomolgus Siglec-15/CD33L3 Protein is expressed from HEK293 with His and Avi tag at the C-Terminus.It contains Met60-Thr322.
Purity:	> 95 % as determined by Tris-Bis PAGE,> 95 % as determined by HPLC
Sterility:	0.22 µm filtered
Endotoxin Level:	Less than 1EU per µg by the LAL method.
Biological Activity Comment:	Immobilized Anti-Human Siglec-15 Antibody, hFc Tag at 1µg/ml (100µl/well) on the plate. Dose response curve for Biotinylated Cynomolgus Siglec-15, His Tag with the EC50 of 23.2ng/ml determined by ELISA. See testing image for detail.

## Target Details

Target:	SIGLEC15
Alternative Name:	Siglec-15 ( <a href="#">SIGLEC15 Products</a> )
Background:	Siglec-15 is a transmembrane glycoprotein in the Siglec family of sialic acid-binding immune regulatory molecules. Mature human Siglec-15 consists of a 244 amino acid extracellular domain (ECD) with two Ig-like domains, a 21 aa transmembrane segment, and a 44 aa cytoplasmic domain. Siglec-15 is a potential therapeutic target for osteoporosis and plays a conserved regulatory role in the immune system of vertebrates.
Molecular Weight:	29.2 kDa. Due to glycosylation, the protein migrates to 33-43 kDa based on Tris-Bis PAGE result.
NCBI Accession:	<a href="#">XP_005586866</a>

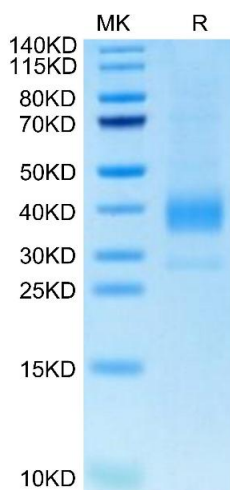
## Application Details

Restrictions:	For Research Use only
---------------	-----------------------

## Handling

Format:	Liquid
Buffer:	Supplied as 0.22µm filtered solution in 20 mM PB, 500 mM NaCl, 0.1M L-arginine ( pH 6.0).
Storage:	-80 °C
Storage Comment:	Valid for 12 months from date of receipt when stored at -80°C.,Recommend to aliquot the protein into smaller quantities for optimal storage. Please minimize freeze-thaw cycles.
Expiry Date:	12 months

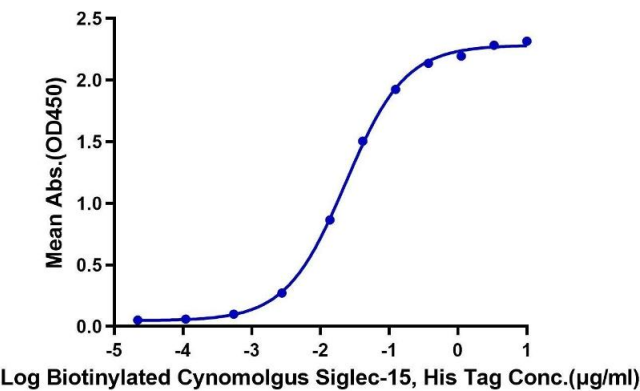
## Images



### SDS-PAGE

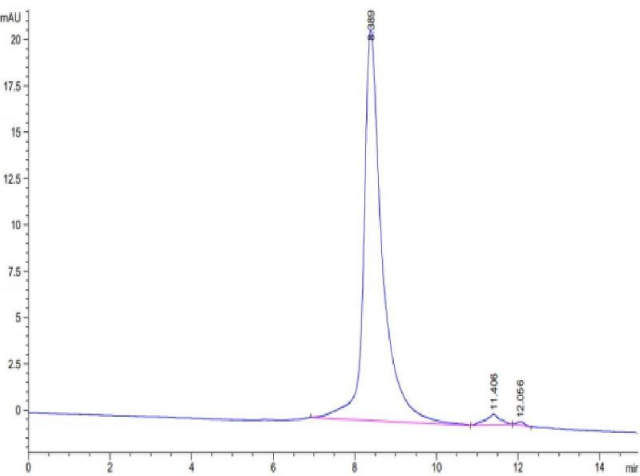
**Image 1.** Biotinylated Cynomolgus Siglec-15 on Tris-Bis PAGE under reduced condition. The purity is greater than 95 % .

**Biotinylated Cynomolgus Siglec-15, His Tag ELISA**  
0.1µg Anti-Human Siglec-15 Antibody, hFc Tag Per Well



**ELISA**

**Image 2.** Immobilized Anti-Human Siglec-15 Antibody, hFc Tag at 1 µg/mL (100 µL/well) on the plate. Dose response curve for Biotinylated Cynomolgus Siglec-15, His Tag with the EC50 of 23.2 ng/mL determined by ELISA.



**Size-exclusion chromatography-High Pressure Liquid Chromatography**

**Image 3.** The purity of Biotinylated Cynomolgus Siglec-15 is greater than 95 % as determined by SEC-HPLC.