

Datasheet for ABIN7275588

CD33 Protein (CD33) (AA 18-259) (Fc Tag)**3** Images[Go to Product page](#)

Overview

Quantity:	100 µg
Target:	CD33
Protein Characteristics:	AA 18-259
Origin:	Human
Source:	HEK-293 Cells
Protein Type:	Recombinant
Purification tag / Conjugate:	This CD33 protein is labelled with Fc Tag.

Product Details

Purpose:	Human Siglec-3/CD33 Protein
Sequence:	Asp18-His259
Characteristics:	Recombinant Human Siglec-3/CD33 Protein is expressed from HEK293 with hFc tag at the C-Terminus. It contains Asp18-His259.
Purity:	> 95 % as determined by Tris-Bis PAGE, > 95 % as determined by HPLC
Sterility:	0.22 µm filtered
Endotoxin Level:	Less than 1EU per µg by the LAL method.
Biological Activity Comment:	Immobilized Human Siglec-3 at 0.5µg/ml (100µl/well) on the plate. Dose response curve for Biotinylated Anti-Siglec-3 Antibody, hFc Tag with the EC50 of 33.9ng/ml determined by ELISA. See testing image for detail.

Target Details

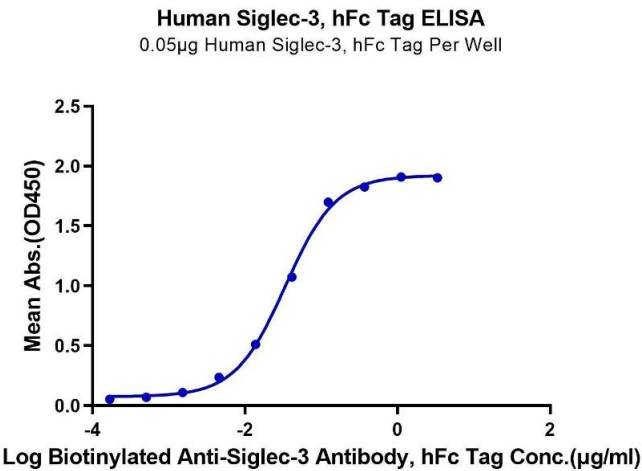
Target:	CD33
Alternative Name:	Siglec-3 (CD33 Products)
Background:	Sialic-acid-binding immunoglobulin-like lectin (Siglec) that plays a role in mediating cell-cell interactions and in maintaining immune cells in a resting state. They are sialoadhesin/CD169/Siglec-1, CD22/Siglec-2, CD33/Siglec-3, Myelin-Associated Glycoprotein (MAG/Siglec-4a) and Siglecs 5 to 11. To date, no Siglec has been shown to recognize any cell surface ligand other than sialic acids, suggesting that interactions with glycans containing this carbohydrate are important in mediating the biological functions of Siglecs.
Molecular Weight:	53.6 kDa. Due to glycosylation, the protein migrates to 68-80 kDa based on Tris-Bis PAGE result.

Application Details

Restrictions:	For Research Use only
---------------	-----------------------

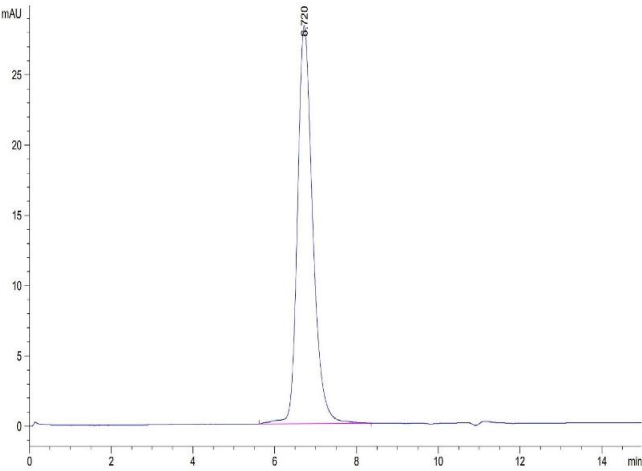
Handling

Format:	Lyophilized
Reconstitution:	Centrifuge the tube before opening. Reconstituting to a concentration more than 100 µg/mL is recommended. Dissolve the lyophilized protein in distilled water.
Buffer:	Lyophilized from 0.22µm filtered solution in PBS (pH 7.4). Normally 8 % trehalose is added as protectant before lyophilization.
Storage:	-20 °C, -80 °C
Storage Comment:	-20 to -80°C for 12 months as supplied from date of receipt., -80°C for 3-6 months after reconstitution., 2-8°C for 2-7 days after reconstitution., Recommend to aliquot the protein into smaller quantities for optimal storage. Please minimize freeze-thaw cycles.
Expiry Date:	12 months



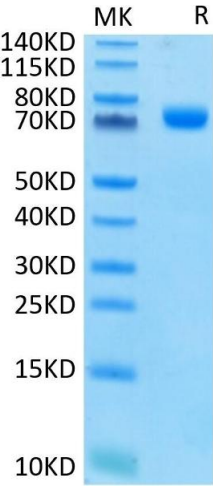
ELISA

Image 1. Immobilized Human Siglec-3 at 0.5 µg/mL (100 µL/well) on the plate. Dose response curve for Biotinylated Anti-Siglec-3 Antibody, hFc Tag with the EC50 of 33.9 ng/mL determined by ELISA.



Size-exclusion chromatography-High Pressure Liquid Chromatography

Image 2. The purity of Human Siglec-3 is greater than 95 % as determined by SEC-HPLC.



SDS-PAGE

Image 3. Human Siglec-3 on Tris-Bis PAGE under reduced conditions. The purity is greater than 95 % .